

THE AREA MAGAZINE FOR LEWDOWN, CHILLATON, CORYTON,
STOWFORD, MARYSTOWE, THRUSHELTON, LEWTRENCHARD

December 2022 / January 2023

The magazine for all that's going on in your area



PUBLISHED BY THE LEWDOWN RESIDENTS ASSOCIATION,

REG. CHARITY NO. 1071808

FUNDED BY THE ADVERTISERS, SPONSORS, MEMBERSHIPS
AND AREA CHURCHES

EMERGENCY NUMBERS
FIRE, POLICE, AMBULANCE

999

*For all other information and contact with
Police stations call 101*

**Your local police contact for
Lewdown. Chillaton. Stowford Lifton
area is -**

PCSO SEONIAD GREENWOOD

Please contact via 101

**For Neighbourhood & Farm Watches
and crime prevention advice**

For HORSE WATCH

Gina. 01837 840716

Floodline 0345 988 1188

Parish Clerks

Lewdown Grouped

Peter van Delft 01566 783023

lewdowngpc.clerk@gmail.com

www.lewdowngroupedpc.org.uk

Milton Abbot Grouped

Shane Honey 01822 840454

shanehoney7@hotmail.com

www.magpc.co.uk

Stowford

Peter van Delft 01566 783023

stowfordclerk@gmail.com

www.stowfordparishcouncil.org.uk

West Devon M.P.

Geoffrey Cox M.P. 01822 612925

County Councillor

Lois Samuel 01837 851240

Borough Councillors

Milton Ford Ward

Mr Neil Jory 01822 860342

Bridestowe Ward

Terry Southcott 01566 783079

Caroline Mott 01837 861212

Tamarside Ward

Chris Edmonds 01566 784794

SCHOOLS

Lewtrenchard 01566 783273

Lifton 01566 784288

Milton Abbott 01822 870273

COLLEGES

Tavistock 01822 614231

Okehampton 01837 650910

Launceston 01566 772468 / 773918

RING AND RIDE SCHEME

Okehampton Area 01837 55000

Tavistock Area 01822 618028

COMMUNITY GROUPS

Cricket Club 07847111330

Chillaton Football Club 01822 860476

Lamerton Pony Club 01822 860350

Lewdown Past 01566 783396

Lewdown Residents Assn 01566 783320

Lewtrenchard W.I. 01566 783779

Lifton Benefice Churches

The Revd. Philip Conway 01566 784462

liftonpriest@yahoo.com

Lifton Surgery 01566 784788 or 111

Red Spider Company 01566 783505

Recreation Field 01566 783367

Stowford Hall 01566 783223

Victory Hall 01566 783267

Youth Cricket 07847111330

Young Farmers 07443 461344

ADVICE HELPLINES

Citizen's Advice Bureau 08444 111444

West Devon Women's Aid 0183755228

Age Concern 01752 665424

Health Info Line 0800 665544

Homelessness Trust 01822 615259

Parentline 0800 800222

Relate 01392 275681

Samaritans 08457 909090

Tavistock Area Support Services (TASS)

(Age UK is at TASS) 01822 616958

Transport to Health 01822 617525

Victim Support 01822 820455

Youthwise Okehampton 01837 54004

SHOP & POST OFFICE

Copper's Post Office & Stores Lewdown

01566 783218

Newslink Archive

Archive copies of the Newslink are
available for viewing/download from:-

[http://www.rawrationsplus.co.uk/
lraarchive.html](http://www.rawrationsplus.co.uk/lraarchive.html)

The Community NewsLink

A MONTHLY MAGAZINE PROVIDING NEWS, INFORMATION AND ITEMS OF INTEREST FOR THE AREAS OF LEWDOWN, CHILLATON, CORYTON, STOWFORD AND MARYSTOWWE, THRUSHELTON, LEWTRENCHARD

Established January 1999
Issue No. 263 December 2022 / January 2023

Editor

Andrew McCarthy

3 Reddicliffe Mews, Lewdown, Devon. EX20 4BQ
Telephone 01566 783093 E-Mail mccarthy.andy@gmail.com

Production, Distribution and Delivery Helpers.

Tim and Sarah Nash, Ruth Dawe, Audrey Jones, Tom Andrews, Mike Bickell
Rita Squires, Terry Southcott, Simon and Monique Hedger, Bob Holland
Julie Chick, Coppers Stores, Keith Abayomi-Turner and Kathy Lawrence

All news, photographs, reports, events etc. for the Newslink need to be handed in to the Editor by 15th of the preceding month.

We welcome your articles / items / advertisements. Though we do our best, we cannot guarantee to publish all that is sent to us, as some things will not reproduce in a good enough quality.

LEWDOWN RESIDENTS ASSOCIATION

We would like to thank all those who have made the commitment over the last year to support the work of the Lewdown Residents Association by paying a subscription. Your support is very much appreciated.

The subscription to become a member of the Residents Association is £3 per head. Donations in support of the magazine are always gratefully received! Please do remember us. THANKYOU.

Name:
Address:
.....
.....

Please send your Donation/Subscription Cheque/cash to:
Mrs Sarah Nash, Anvil Cottage, Downpark, Lewdown. EX20 4BU
Or via BACS—Lewdown Residents Assoc. sort code 09-01-54 , acc 97666081
For more information, please email: sarahnash@btinternet.com

Front Cover Picture— Wishing everyone a very merry Christmas and a happy and prosperous New Year from the Lewdown Residents Association!
Image from Image Diamond (<https://www.imagediamond.com>)

Soupa Troopers

All welcome to this community event



2022

Wednesday December 14th Christmas Special

Wednesday January 11th

Wednesday February 8th

**From 12.30pm in Lewdown Victory Hall
Soup and a Bread Roll, Tea or Coffee - £3**



Followed by conversation & games



S Hedger 11/22

Dear readers. it is only little old me here, welcoming you all to this festive double bumper edition.

A friend of mind has been charged by police for writing a book with no full stops in it.

We are all expecting a very long sentence.

This is a example of what you have got to expect from this high brow literally feast, that is my festive pile of tripe.

More news from our newly appointed police liaison officer.

Police have confirmed that the man who was tragically found dead, after a fall from the 18th floor roof of a local night club, was not a bouncer.

I hope your preparations for Christmas are in hand, or are you a last minute mad rush sort of person.

The present Mrs Nash has things well in hand, which is good news for the in-laws , as there will be plenty in the house, including eggs when they rock up with crackers and wine, can live without the crackers, put father has very good taste in wine, not that I know a great deal on the subject, but like everyone else, I know what I like.

Before i go any further, i want to thank everyone who has anything to do with the editing, printing and distribution of this wonderful magazine, also the treasurer and secretary for just being lovely people, you know who you all are, and for the best will in the world if it was left up to me there would not be a magazine at all. to say my 15 month old grandson has more knowledge on such matters in computing, would not be a understatement. Also to the present Mrs Nash as acting as a unpaid secretary and proof reader of this rubbish, well someone has to vet this and try to make some sense of it before its let loose on you the poor people who receive this magazine.

Will close now, as it's time to cook something to eat, and tonight is sounding like a crispy bacon butty night, with ketchup, other sauces are available.

Here's hoping you all have a joyous and peaceful Christmas and new year. Best wishes from

Tim Nash still your second best chairperson.

And finally

I met this bloke with a digeridoo, and he was playing Dancing queen on it..... .I thought that's Abba-riginal.

Poppy appeal 2022

Many thanks to you all in this small but very generous area.

This year together we raised a new record total of

£2081.77

which is amazing with the squeeze on everybody's income.

Many thanks to everyone who sold poppies on their premises,

or went house to house collecting.

you know who you all are, and hope you all are surrounded in
a wonderful warm glow

like you've eaten a hearty bowl of ready break all week.

after the effort that was put in this year.

many thanks again from Tim and Nicky Nash

area organisers.

Stowford Parish Hall Hire Charges

£3 per hour (Special rates for users of over 30 weeks per year £2 per hour)

Parties, Wedding, Funerals £20

General and Euro Elections £120

Tables £2 each (plus £20 Deposit) Any number of Chairs 25p each



Hear ye, Hear ye

The most fun you can have with your
clothes on at

Christmas.

Back by popular demand

Carols around the tree, at the Victory hall

Monday 19th, December at 7pm prompt ish.

Mulled wine, smacks ,

Lots and lots of joyous carol singing,
and BINGO.

Yes Christmas bingo a couple of games, in-
stead of the Quiz

Really rubbish prizes, but what do you ex-
pect.

It's all free.

hope to see you all there.



An Daras Trust
Igniting Curiosity Growing Capabilities

Low Trenchard Primary School



Baby / Toddler Session

Monday morning 9.30am to 10.30am.
Justine welcomes you to come and join her at Low Trenchard Primary School for lots of fun activities (some messy) and plenty of singing.

A great opportunity to meet other parents / carers.

£2.00 per session – please bring your own snack (we are unable to provide drinks for parents).

We will be adhering to all current covid policies and procedures to keep you and your little one safe.

Monday to Friday

8.45am to 3.15pm

2-5 year olds

Led by Lisa McMorrow

Early Years Teacher

Please phone for availability.

Early Years Foundation Unit with plenty of safe outdoor space.

We accept 2gether funding for 2 year olds and Early Years Education funding for 3 year olds.

NEW – Wrap around care

Available for 2-11 year olds

£2 per hour (1/2 hour bookings available)

8am to 9am breakfast club.

3.30pm to 6pm after school care including snacks.

For more information contact the school office on
01566 783273.

www.lewtrenchard.devon.sch.uk

Email lewtrenchard@andaras.org



CANNON BARN PODIATRY & FOOT PAIN CLINIC

Specialists in Lower Limb Musculoskeletal Conditions including:
Heel Pain | Plantar Fasciitis | Achilles Tendonopathy | Mortons Neuroma

SWISS DOLORCLAST RADIAL SHOCKWAVE THERAPY CLINIC

General Chiropody & Podiatry Patients very welcome.

Helping you walk towards pain free...

Call: 07946 473972

www.cannonbarnpodiatry.co.uk

1 Cannon Barn Cottages | Lewdown | Nr Okehampton EX20 4BT



why get wet?

To Hire



**White Umbrellas
For
your Wedding**

Tel: 01566 783342

All proceeds to
the Gurkha Welfare Trust

RED SQUIRREL TREECARE

Chillaton - Devon
Tree Removal - Pruning
Hedge Cutting- Seasoned Firewood
Low impact/small scale Forestry

call Matt on 01822860651

e:info@redsquirreltreecare.co.uk

Gardeners



Enjoy the Winners Circle
For that champion veg
Collect your own FREE
Proper Well Rotted
*The Only Local Source of
Pedigree Fell Pony Plops*
01566 783471
Free Bags Available!
Trailers welcome!



The Clovelly Inn Bratton Clovelly



Torben,

Alex & Thomas
look forward to seeing you
01837 871447

Suzy,

Apples Juicing

Have you got too many apples?
We can crush them, press,
bottle & sterilise for Juice
Contact - George Bellamy
Woolacott Farm, Lewdown
01566 783266

TOP SOIL

TOP QUALITY TOP SOIL FOR SALE

SEA SAND · ROAD PLANINGS

VARIOUS DECORATIVE GRAVEL CHIPPINGS & BUILDING AGGREGATES

No VAT

01566 784645 OR 07771 823414

A.J. NASH BUILDERS LTD.

Andy Nash

General Builder & Decorator

Anvil Cottage
Lewdown
Okehampton

07769728425

01566 783274

sarahnash@btinternet.com



Mobile Foot Care

Sally Isaac S.A.C. Dip. FHPT/FHPP



*Gentle and professional
foot care
in your own home*

If you suffer discomfort from

- corns
- cracked heels
- callus
- ingrown toenails
- thickened/tough nails

*or just have difficulty cutting
your toenails then
please ring me*

I'll come to you!

Telephone Sally
07961 076 168

WELCOME TO
LOBHILL FARMHOUSE
BED AND BREAKFAST
and HOLIDAY COTTAGE



Lobhill Farmhouse, Lewdown,
EX20 4DT

Tel: 01566 783542
0781 724 4687

Jane Colwill

www.lobhillbedandbreakfast.co.uk

Lewdown Victory Hall

Big Breakfast

Saturday 10th December
From 10am-2pm

Large £8

Small £6

Bacon/Sausage sandwich also available



New Bus Route times to Okehampton Station!

Stagecoach will no longer operate service 6A between Launceston and Okehampton, which will be replaced by new service 306 operated by Go Cornwall Bus under contract to Devon County Council and Cornwall Council

Service 306 will also serve Okehampton Railway Station for train connections.

Note: There will no longer be a Sunday service between Launceston and Okehampton.



176 306

176 Bodmin | Launceston via Callywith College | Bolventor

306 Launceston | Okehampton via Lifton ⇌ Rail Link 606

service operated by
GO CORNWALL
BUS

buses towards Okehampton

	306	176	306	306	176	176	306
Callywith College		0900			1315	1635	
Bolventor Jamaica Inn		0913			1330	1650	
Tregadillett East Park		▼			1342	1702	
Launceston Westgate Street arr		0926			1354	1714	
Launceston Westgate Street dep	0628		0928	1328			1728
Lifton Lifton Hall Hotel	0643		0943	1343			1743
Lewdown Post Office	0651		0951	1351			1751
Bridestowe turn	0658		0958	1358			1758
Okehampton West Street Stand B	0710		1010	1410			1810
🚆 Okehampton Railway Station	0717		1017	1417			1817

buses towards Launceston / Bodmin

	306	176	306	306	176	306
🚆 Okehampton Railway Station	0735		1025	1425		1825
Okehampton West Street Stand A	0742		1032	1432		1832
Bridestowe turn	0753		1043	1443		1843
Lewdown Memorial	0801		1051	1451		1851
Lifton Arundell Arms	0808		1058	1458		1858
Launceston Westgate Street arr	0820	●	1110	1510	●	1910
Launceston Westgate Street dep		0827			1515	
Tregadillett East Park		0841			1522	
Bolventor Jamaica Inn		0851			1534	
Callywith College		0905			1549	

Lewtrenchard WI November Report

We met November 14 at Lewdown Victory Hall.

The meeting was attended by 14 members, quite a few apologies due to ill health & colds, we wish everyone a speedy recovery. After singing Jerusalem, reading the minutes of the previous meeting & finances, we ploughed through our rather long agenda.



Not many attended our walk or coffee morning but both were thoroughly enjoyed. Ring Mary E if you would like a lift.



Margaret then handed over to Allana Chick who presented painting on glass.

Allana explained that it was easy as long as you don't 'bake it' you can wipe off any mishaps and begin again. Allana went

through 3 techniques: sponging on, outlining & flooding with colour and brush dipped straight into the paint - something for all abilities. By putting a piece of white paper inside the jar it is easier to see what you are painting or you can use a template e.g. a flower to give a guide for your outliner. Every time you apply a colour or outliner, give it a gentle blast with a hairdryer, then apply more paint for a stronger effect. Once your artwork is complete, leave it to dry for 24 hours then bake at 160° for 40 minutes. After hints & tips, we were let loose on the paint and everyone had a go, the room went quiet for a bit as we all concentrated on our work, it was good fun and actually quite relaxing, Allana was a very good and patience teacher. If anyone gets the 'bug' Allana can recommend a good and generous starter kit containing 10 colours plus various other bits and bobs.

Date and venue for next meeting: December 12, 2022, 7pm Victory Hall Lewdown, Christmas celebrations & entertainment by the Lifton Singers

December dates for your diary:

08 - Walk

15 - Coffee morning at Roadford Lake

Please come along to any of the above, you will be made most welcome.



A Warm Welcome at Lifton Community Centre

Drop-in for a hot drink
& social time
on Mondays

10.30 am - 12.30 pm

From 5 December

The number of days and the length of time
we can provide this service will be increased if
there is sufficient demand & volunteers.
Please contact Elizabeth on 784386 to offer
whatever time you can.

St Mary the Virgin, Marystowe

We had a very moving and reflective Service of Remembrance for Marystowe, Chillaton and Coryton combined.

We missed John Dawe and Iris Griffiths who both played a large part in the services in many past years.

The congregation was a combination of new faces and old friends. We do hope the new faces become new friends.

Thanks go to everyone who took part in the service making it bridge the old and the new.

Our love and prayers are with Amy Harrowell who was confirmed in October, she is a regular worshipper at Marystowe and also involved in our social events, perhaps you will remember her as the blood-stained Nancy in last year's Oliver!



We are now in full flow getting prepared for our Christmas celebrations at Marystowe/Chillaton.

As always, we seem to get carried away, so there are a few dates we would like to ask to go onto your calendar/into your diaries.

We look forward to seeing many of you over the next few weeks.

Saturday 26 November 10am – midday Christmas Coffee Morning with Stalls.

Please do join us in the Church, we have a number of craft stalls, the books, delicious cakes and the launch of our Christmas Hamper Draw.

Christmas Hamper Draw. Chris Gallie is preparing 5 beautiful hampers:

- Traditional Christmas Hamper
- Chocoholics Cheer
- Gardener's Delight
- Pamper Hamper
- Himper (hamper for him)

Please contact Barbara, Joy or any member of the PCC for tickets, which are £1 each. The Draw will take place during our Christmas Zoom evening.

Christmas Zoom Evening 10 December 6.30 pm – A Christmas Carol

Please see the Advert in the magazine for details of the Zoom invitation. We are offering the usual Savoury and Sweet Nibble Bags which will be delivered locally on the 10th December so you can be comfortable and catered for as you watch familiar

faces being surprisingly (or not) silly and funny in order to raise money for the Church and The Children's Society. Again the Lifton Singers are kindly providing some sing-a-long moments and the words will be in lucky number programmes (to win a Christmas Cake).

Christmas Eve Carols Around the Tree – Marystowe Schoolroom 5pm – 6pm

Before our usual Christmas Eve Service we will be singing Carols and enjoying Mulled Wine and Mince Pies; this will be the second of our "Pop-Up" evenings for Marystowe and Chillaton using the Schoolroom as the location. We are hopeful of a monthly village 'get together' in what we are now calling The Virgin Arms!

Finally, this is the last Christmas that Deborah Asbridge is organising the decoration for the Church as she is standing down. If you regularly provide decorations for our Church then please look out for a note from Joy so the 2023 flower rota can be prepared. If you would like to become a regular decorator of the Church then please do let us know.

A big

Thank You

to Deborah for her organisation of the decoration of our Church and also for her imagination in arranging special displays – the beautiful flower festival in 2020 and also the stunning displays for the late Queen's Jubilee this year -the pictures in this article are all Deborah's talent and we look forward to enjoying them in the future.



Connecting Devon
and Somerset



Fed up with slow internet service?



Have you heard about Airband?

Would you like to know what is being planned for your area?

Want to know about Airband's capabilities and their superfast broadband rollout for Stowford?

On Tuesday 10th January 2023 at 7:30pm, at the Stowford Village Hall, Faye Cross, Airband Community Liaison Officer, will be attending the Stowford Parish Council meeting to discuss and field questions about the Connecting Devon and Somerset initiative (CDS)

This is your chance to find out, ask questions and understand what is being planned for your area.





It's the shortest day of the year and the kids are *hyper* so why not calm them down by bringing them to the

Winter Solstice Event

on the evening of

**Wednesday 21st December at the Forgotten Garden
of Lewtrenchard between 6pm until 8pm.**

The candlelight event with a hot drink, mince pies and carol singing

For more details and updates see our website.

<https://www.forgottengarden.co.uk/category/news/>





CHURCH NEWSLETTER

Ministers

United Benefice of Lifton, Broadwood, Stowford,
Lewtrenchard with Thrushelton & Kelly with Bradstone

The Revd. Philip Conway, 01566 784462

liftonpriest@yahoo.com

The Rectory, Parsonage Court, Lifton PL16 0BJ

Milton Abbot Benefice

The Revd. Andy Atkins, 01822 870298

andya4jc@gmail.com

The Vicarage, The Parade, Milton Abbot PL19 0NZ

Churchwardens

Lifton-St Mary's

Mrs E Brown

01566 784386

Miss N Brimblecombe

Broadwood- St Nicholas

Mr D Perkin

01566 776758

Kelly with Bradstone-St Mary's

Mr W Kelly

01822 870393

Marystowe—St Mary the Virgin

Mrs B Dawe

01566 784797

Coryton—St Andrews

Mr G. Vicat

01822 820254

Mr R. Searight

01822 860148

Stowford—St John the Baptist

Mr C Chick

01566 783223

Lewtrenchard—St Peters

Mrs A Westlake

01566 783909

Mrs R. Dawe

01566 783127

Thrushelton—St George

Mr A J Nash

01566 783274

Mr T Nash

01566 783320

Roman Catholic Services

Tavistock

Sunday 9.15 am

Holy Days 10am

Fr. Greatbatch 01822 612645

(P. Sparling 01822 860355)

Okehampton

Saturday 6pm

Sunday 11am

Fr M. Darline Joseph

01837 52229

Launceston

Sunday 10.30 am

Holy Days 7.30pm

Canon John Deeny 01566 773166

Quakers

Meeting for Worship

Tavistock every Sunday 10.00am.

4 Canal Road, Tavistock.

Contact – Kay Nicholson

01822 614596

Okehampton

Every Sunday 10.30am.

Children's Meeting 2nd Sunday

Community Centre, Okehampton

Community College, Mill Road,

Okehampton.

Contact - Eleanor Flack 01837 53475

St. Mary the Virgin, Marystowe

Please see the church website www.southtamar.church for details about services.

Services are also available online from 6pm on Sundays.

North Tamar Mission Community

Services and Events: December 2022 -January 2023

At going to Print, the following services are arranged in the Benefice

- 3rd December** ***St. Mary's Lifton Christmas Fayre***
Saturday ***From 1pm in the Community Centre***
- 4th December** The Second Sunday of Advent
 8am Eucharist at Stowford
 9.30am Parish Eucharist at Lifton
 11.15am Parish Eucharist at Kelly
- 9th December** ***Carols at Coombe Trenchard***
Friday ***starting at 6pm.***
- 11th December** The Third Sunday of Advent
 9.30am **Parish Eucharist at Broadwoodwidge**
 Morning Prayer at Lifton
 Morning Prayer at Thrushelton
 11.15am **Parish Eucharist at Lewtrenchard**
- 16th December** ***Broadwoodwidge Parish Carols Singing at Upcott***
Friday ***Barton***
 Starting at 6pm
- 18th December** The Fourth Sunday of Advent
 9.30am **Parish Eucharist at Lifton**
 11.15am **Parish Eucharist at Stowford**
 Morning Prayer at Kelly
 4pm **Lamerton Hunt Carol Service at Stowford**
- 23rd December** **Community Carol Service at Lifton**
Friday **starting at 7pm**
- 24th December** **CHRISTMAS EVE**
- 4pm** **Children's Crib Service at Lifton**
 6pm **Christingle Service at Stowford**
 Nine Lessons and Carols at Broadwoodwidge
 8pm **Vigil First Eucharist of Christmas at Kelly**
 11.45pm **Solemn First Eucharist of Christmas at**
 Lewtrenchard

25th December CHRISTMAS DAY

9.30am Christmas Morning Eucharist at Thrushelton
11am Christmas Morning Family Eucharist at Lifton

2023

1st January The Naming of Jesus
10am Mission Community Eucharist at Stowford

8th January The Baptism of Christ
9.30am Parish Eucharist at Broadwoodwidge
Morning Prayer at Thrushelton
11.15am Parish Eucharist at Lewtrenchard
4pm **Evensong at Lifton** *Followed by Tea*

15th January The Second Sunday of Epiphany
9.30am Parish Eucharist at Lifton
11.15am Parish Eucharist at Stowford

22nd January The Fourth Sunday after Epiphany
9.30am Parish Eucharist at Thrushelton
Morning Prayer at Broadwoodwidge
Morning Prayer at Lifton
11.15am Parish Eucharist at Lewtrenchard

29th January The Fifth Sunday after Epiphany
10am **Together at Ten Eucharist at Upcott Barton!**
4pm **Christingle Service at Lifton**

2nd February **The Presentation of Christ in the Temple**
Thursday **(Candlemas)**
7pm Festival Eucharist at Kelly

5th February The Third Sunday Before Lent
8am: Eucharist at Stowford
9.30am Parish Eucharist at Lifton
11.15am Parish Eucharist at Kelly

Wednesday Morning Eucharist: 10.30 at Lifton

There may be some occasions when the Wednesday Morning Service will be a service of Morning Prayer.

From The Parish Priest

Dear friends,

John Betjeman begins his wonderful Christmas Poem with the words:” The waiting Bells of Advent ring...” and by the time you are reading this Advent has begun. It is a time for watching, waiting, and preparing. It is traditionally a time of excitement and expectation which is often swallowed up by the mad dash for Christmas Shopping. In church though, we try to keep the season of Advent as a solemn time of preparation to welcome Jesus into our lives. Not just as the baby in the Crib at Christmas, but also into our lives, day by day. Advent Calendars and candles and the famous Advent wreath with its five candles are all ways of counting down and building up towards the great festival of the Birth of Jesus.

As we approach the new year too, there is always a tendency to look back on the past year. It has been a momentous one nationally, with the death of Her Majesty the Queen, and the accession of King Charles. Politically there was great upheaval, an undeclared war in Europe and an unprecedented financial crisis. The scars and effects of the Covid Pandemic have also cast a long shadow in all our lives.

In Advent there is a tradition of looking back into the Old Testament to look for signs and hints of the coming of Jesus. So, as we look back at what has been, for many, a very tough year, let us look for the signs of God’s goodness and hope in the past year: Events that have united or inspired us, acts of kindness that have moved us, works of art or education that have uplifted us all tell of the hope that God gives us for the future.

We approach 2023 with hope in the goodness of God and with renewed commitment to make this world a place that reflects his will, purpose, and kingdom.

May I wish you a very Happy Christmas and a peaceful, prosperous, and happy new year.

With love and prayers,

Philip

Bridestowe Methodist Church

Preachers for December

4 th	Drop in at the ARK 10.30 -12.30
11 th	G Yates at 11.00
18 th	C of E at 9.30
25 th	Rev C Jackson 11.00

Preachers for January

1 st	Drop in at the ARK 10.30 -12.30
8 th	Bridestowe Worship Group 11.00
15 th	D Sutcliffe 11.00
22 nd	Rev J Cook
29 th	A Banfield

WORRIED ABOUT A CHILD OR VULNERABLE ADULT?



If you have any concerns regarding the welfare and well-being of a child or vulnerable adult, or about the behaviour of anyone towards a child or adult, then contact:

The Revd. Philip Conway: 01566 784462 liftonpriest@yahoo.com

OR

The Diocesan Safeguarding Adviser

Charlie Pitman: 01392 345909

charles.pitman@exeter.anglican.org

If you are a young person and you feel unhappy about something happening to you, you can call Childline on 0800 11 11.



Lewdown Playground
Fundraiser

CHRISTMAS *Grand* BAZAAR

Santa's Grotto

Craft Stalls

New and Pre-Loved Clothing

Raffle

Cake Stall

Refreshments

Sat 3rd Dec

12-4 PM

Lewdown Victory Hall

EX20 4DP

Lewdown
Playground

Tavy Turf

Pete Badge

01822 610998

07980564175

Growing & Supplying

Turf, Topsoil & Compost

Acres of weed treated turf all ready to be cut.

All turf is cut fresh then supplied direct to your drive.

Topsoil and Compost dry stored

Landscaping & Laying

Years of experience in clearing, planning, landscaping lawns & laying turf.

Diggers, Stone Buriers, levellers & graders

Grass Cutting & Maintaining

Specialists in maintaining large lawns & playing fields.

Grass Cutting, Collecting, Disposal & Mulching.

Vegetation Clearance.

We only grow professional turf & use specialist machinery

GRAHAM TOWNSEND GROUNDWORKS

WATER DRAINAGE & GROUNDWORK SPECIALISTS

WATER LEAKS & RENEWALS

DRAINS CLEARED

GROUNDWORKS

TREATMENT PLANT

DRAINS REPLACED

ALL FENCING WORK

MOLING (No Dig)

DEMOLITION

PATIOS DRIVES

SEPTIC TANKS INSTALLED

FREE ESTIMATES

TEL: 01837 657687 / 01566 783788

MOBILE: 07866 465093

email: info@gtownsendgroundworks.com



STOWFORD COMMUNITY COFFEE MORNING

Support this new venture and come and meet your neighbours for a coffee, cake and catch up!

When?

10am-12 noon on the first Tuesday of every month.

Where?

Stowford Parish Hall.

Cost?

£3 per person (cash only) which includes a hot drink and cake.

Profits will be donated to a charity chosen by SCCM.

All friends and family welcome.

If you need help with transport, please contact Sarah on 07801106702 or Tracy on 07973327161



R Mears & Sons **Chimney Sweeps & Stove Installation**

Established over 30 years

Vac Brush. Full CCTV investigations.

Pots, Cowlings & Bird Protection fitted. Chimneys Lined.

Solid Fuel Appliances, Rayburns, Woodburners,

Stoves, etc serviced. Fully Insured.

Tel: 01840 261221 Tavistock: 01822 664554

Mob: 07737 533392

www.sweepdevon.com



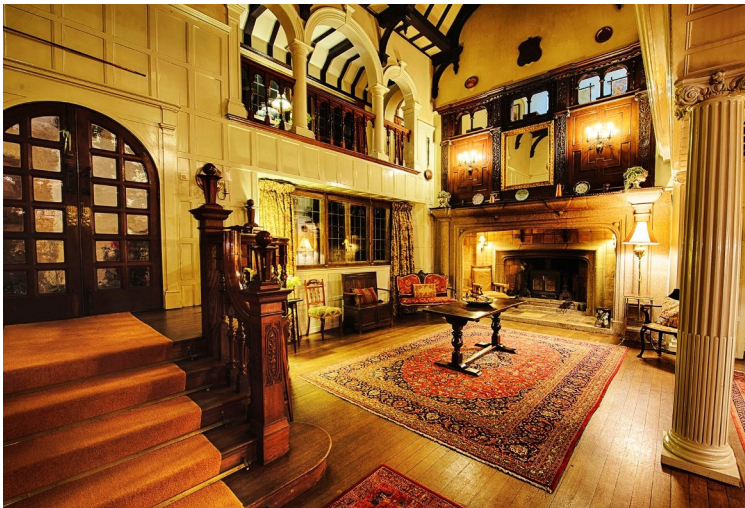


MERRY CHRISTMAS



December 9th at 6.00pm

Coombe Trenchard warmly invites you to an evening of Carol singing and performances of bell ringing from the Lewdown handbell ringers in the fabulous setting of the main hall.



Hot mulled cider and seasonal treats will be available to ease your tonsils for singing

Entry is free, however donations will be most welcome.

MERRY CHRISTMAS



LEWDOWN YFC

CHRISTMAS POULTRY



Friday 9th December

LEWDOWN VICTORY HALL



Doors open 7:30 for 8pm start

Raising money for

Chickens • Chicken dinner • Cash flyer

Refreshments • Raffle

All ages welcome • Part of the Tarka Christmas challenge

For more information contact Jordan on 07807706278



**Roger's
Painting & Decorating
Services**

Interior & Exterior Work
Traditional & Modern Techniques
City & Guilds Qualified
30 years Experience



Mobile: 07783 819171

Septic Tanks

Emptied

Phone: 01805 601203

Mobile: 07831 241531

**Leave a message, we will
return your call, or email:**

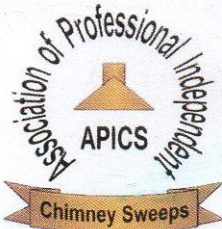
hearnhaulageltd@outlook.com

**Small Lorry
Available**

Card payment accepted

Hearn Haulage Ltd

Chimney Sweep



STEVE SWIFT

01566 783435 or 07890 467406

Clean & Professional Service

**Chimneys should be cleaned at least once a year.
In cases of wood & bituminous coal up to four times a year is recommended**

K. Moore & Son.

PLANT HIRE

Specialising in all sitework,
drives, sand schools, septic tanks
hedging and all types of farmwork.

Royal Oak, Newton Down, Lifton

Tel:- 01566 784722

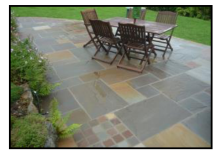
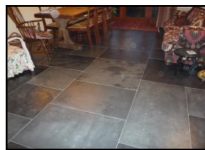
07785 540494

MARKSTONE GRANITE

For all your Renovation, Conversion and Landscaping Needs!

We don't just sell granite.....

- * **Slate:** Flooring, Worktops, Sills, Hearths & Tables.
- * **Granite** Quoins, Cobbles, Lintels, Steps, Gateposts & Troughs.
- * **Oak** Beams, Oak Sleepers, Barrels & Boards (ideal for shelving)
- * **Natural Stone Paving** & Cobbles. * **Porcelain** Paving & Flooring.
- * **Rustic Oak** & Tables * **Slate Cheese Boards** & Placemats.



Tel. 01566 784289 Lifton Devon. www.markstonegranite.co.uk

Launceston Men's Probus Club



Are you a retired Professional?
Are you a retired business man?

If you answered yes to one of the above come
and join us.

We meet on the 2nd and 4th Monday each
month

at 10.15am (except Bank holidays)

at The Eagle House Hotel, Launceston. You
are welcome to come and meet us.

There is an opportunity to socialize over a
coffee with like minded people.

We have a speaker to entertain us at each of
our meetings and events during the year.

We look forward to seeing you.

Launceston-Mens-Probus.btck.co.uk

Or

Telephone Neil on 01566 86514



07734 956925

8- Seater Vehicle Available

Anytime - Anyplace - Anywhere

AIRPORT • TRAIN STATION
SHOPPING • DOCTOR

Prompt Reliable Honest
FAMILY RUN COMPANY
24/7 365 days



A LOCALLY BASED SERVICE AND REPAIR
COMPANY FOR OIL FIRED HEATING/COOKING
APPLIANCES.

MARK WOULD BE PLEASED TO OFFER
COMPETITIVE PRICES FOR A QUALITY SERVICE.
DISCOUNTS ARE AVAILABLE: PLEASE ENQUIRE

- ◇ BASIC BOILER SERVICE £60
- ◇ BASIC COOKER SERVICE £70

PLUS THE ADDED BONUS OF NO VAT TO PAY!

SO GRAB A BARGAIN SERVICE FOR YOUR BOILER OR
COOKER BY CALLING:

MARK ON 07814 976 076

BROADWOODWIDGERBOILERSERVICE@GMAIL.COM

PLUMBER

EST 40 Years

Lewdown & District

Tel: 01566 783562

Mobile: 07731878510

COLOUR PRINTING & COPYING

This service is available for a minimum of 10 copies at a charge of 5p per single copy or 7p per double sided copy.

FOR SALE COPIER PAPER

£3.50 per ream

The Community Newlink purchases its paper in bulk and as such is able to access competitively priced materials. We can currently offer our readers copier paper for the special price of £3.50 per ream, a vast saving on High Street prices. We recommend you phone to check availability and arrange a convenient time to collect.

Please Contact: **Terry Southcott, Fairview Bungalow, Lewdown**
Phone 01566 783079.

All proceeds will go to The Lewdown Residents Association
and The Community Newlink.

Les Sort It!

I am expanding my gardening business and offer a variety of skills. No job turned down. All jobs considered.

Honest, Hardworking and reliable.

Any inquiries please call Les 07591761096



Lewdown

Located in the roadside porch of the Blue Lion (EX20 4DL)

Please note it is not recognised by 999 calls if more than 200 meters away from it.

When ringing 999 they will access code to open box.

Chillaton

Located in the Village Square on the wall of No. 1 Barn Cottages (PL16 0HS)

The 999 operator will be able to give directions for its use.

Stowford's

Christmas



Stowford Parish Hall

Thursday 1st December 7.30pm

also

Thursday 5th January 7.30pm

£3 per person at the door Teams of 2 – 6 people

Bring your own drinks, we provide the nibbles



Beautiful handmade 17in Wreaths



**Available to order now from St Peter's
Lewtrenchard for £20.00, £5.00 Deposit req. Call
Jan Martin on 07541 311949.**

**Orders ready for collection from St Peter's on
the 10th @ 11.00 & 11 December @ 12.15 after
the Sunday Service.**

**Profits from the sales to be equally divided
between St Luke's Hospice and St Peter's
Church Fabric Fund**



Scammers' tactics are increasingly sophisticated and sometimes hard to recognise. However, there are things to look out for.

- **If it seems too good to be true, it probably is.** E.g. tickets to an event that are much cheaper than being sold elsewhere or a holiday that's a lot less than you would expect to pay.
- Be wary of people contacting you out of the blue on social media, telephone or via text and email offering items for sale or a deal on something.
- If you're buying from a website you haven't used before do a bit of research. Look at the terms and conditions and check that the address is a proper address not just a PO box number. This information can usually be found in the 'contact us' section. Registered UK companies lodge their details on the Companies House website.
- Check what people have said about the company – don't just rely on the reviews on the website itself, have a look at other review sites.
- Scammers often ask you to pay in an unusual way or pay very quickly. E.g. send money via a money transfer service such as MoneyGram or Western Union or pay via vouchers.
- **Never** give away personal information such as a password or PIN and never click on or download anything you don't trust.

To find out about scams across the country, you can sign up to the Trading Standards email alert on their website. National Trading Standards Scams Team (list-manage.com)

If you have transferred money speak to your bank and to the police. If you feel the scammer is in your area and you feel unsafe you should also inform the police. You can also report the scam to Citizens Advice Report a scam - Citizens Advice and Action Fraud

Don't feel embarrassed reporting a scam – it can happen to any one of us and scammers are getting increasingly sophisticated. If you want to talk to someone locally you can contact CA TNMWD on our free, local AdviceLine

0808 27 87 999 or visit www.ruraldevoncab.org.uk and click on 'Get Advice'.

Demand for our services is increasing all the time not just at this time of year. If you would like to join us as a volunteer contact recruitment@ruraldevoncab.org.uk to find out more. We are a friendly bunch and you will receive ongoing training and support to enable you to help people in our community resolve their problems.

It's Back.....

The Marystowe Church Dicken's Christmas Evening by
Zoom

December 10th 2022
6.30 pm

A Christmas Carol

Watch a reading by some of the usual suspects who have press-ganged new "volunteers" ...with sing-a-long songs from the Lifton Singers.

The Zoom link is:

[https://us02web.zoom.us/j/83356244042?
pwd=c3VLS2JydXNaWjUwUUUt4Qm9YajU0Zz09](https://us02web.zoom.us/j/83356244042?pwd=c3VLS2JydXNaWjUwUUUt4Qm9YajU0Zz09)

Meeting ID: 833 5624 4042

Passcode: 982039

Please call Joy (01822 860630) or email joy.mcsmythurs@btinternet.com to be sent an electronic link (much easier than typing all the address), also call to find out how to make the most of the evening with Christmas nibble boxes delivered to your door, Tickets for the Hamper Draw, and a lucky programme to be able to sing-a-long.

Proceeds for Marystowe Church
and

The Children's

TORQUAY TAXIS Ltd

AIR AND SEA PORT
TRANSFERS

luxury comfortable transport

Door to door service

All air and sea ports covered

Reliable service

Competitive prices

18 years established

Call Jared Spencer
07830360341
01566 451442

**ROGER
WONNACOTT**

GROUND & GARDEN MAINTENANCE

- ▲ GENERAL GARDEN MAINTENANCE
- ▲ SERVICES RENEWED & REPLACED
- ▲ LEAK REPAIRS & TROUBLESHOOTING
- ▲ MOLE / GRUNDOMAT WORK UNDERTAKEN
- ▲ MOLE & COMPRESSOR AVAILABLE



- ▲ COMPLETE JOB PRICING OR HOURLY RATES
- ▲ FULLY INSURED & BASED NEAR LAUNCESTON

07919 912776

 rwonnacott@hotmail.com



supplier of
HARDWOOD LOGS
cut and split to your requirements
Tel. Colin Bennett: 01822 487259
Mobile: 07523172369

Lewdown
Victory Hall

Bookings contact Esme
or Roy Stacey
On 01566 783267

Broadbury Landcare

All Aspects of Garden Maintenance
and Landscaping

Fully Qualified Fully Insured Free Estimates
10 Years Experience

Andrew Barton 07532 216216

For **Dogs & Cats** **Raw Meat Animal Feed**
Convenient (400g blocks) *Frozen to preserve*

Natural, just meat or meat and bone

No Preservatives, No Artificial Colouring's
(both can be harmful to your animal)

For information or to order

Raw Rations Plus



website: **www.rawrationsplus.co.uk**

Phone: 07831309666

Email: sales@rawrationsplus.co.uk

Post: Fairview Bungalow, Lewdown,
Okehampton, Devon EX20 4DL



**A C WORTH
BUILDERS**



GENERAL BUILDERS, DECORATORS,
PLUMBING & HEATING,
PURPOSE MADE JOINERY etc.

Kirtonia, Vale Down, Lydford DEVON EX20 4BB

Email: acworthbuilders@aol.com



Tel: 01566 783282
Keith: 07778 471648
Andy: 07867 524515





T C M Plumbing

Burst pipes? Tap dripping? Overflow running? Valves Leaking?
Radiators not getting hot? Gutters blocked or leaking?

Based locally at Inwardleigh we cover the surrounding areas
Helping you with your plumbing needs no matter how small

Contact Tim Morgan

Tel: 01837 810599 Mobile: 07838 901803

**Or visit our website www.tcmlumbing.org.uk
to see what we can do for you**

J.D. HALL

CARPENTER AND JOINER

(OVER 30 YEARS EXPERIENCE.)

FOR ALL YOUR WOODWORKING NEEDS

CALL 01566 783566 OR 07881 752822

www.jdhallowalkconstruction.co.uk

TAMAR COSMETICS DOCTOR

Medical Aesthetics Clinic
Dr Sarah Michaels
MBBS, BA (Hons), MRCGP

Discreet Clinic in Lifton
Close to Launceston
Free Parking

sarah@tamarcosmeticsdoctor.co.uk
07830888557

www.tamarcosmeticsdoctor.co.uk
Find me on Facebook, WhatsApp and
Instagram

Treatments and Prices (free consultation)

Muscle Relaxant Injections including migraine treatment
£180 for one area, £250 for 2 areas, £300 for 3 areas.

Total face and neck treatment £450

Includes review at 2 weeks

Dermal Filler Injections

Volumise, soften and reshape from £250

Combine 2 treatments for £350 and 3 for £450

Includes review at 2 weeks

Fat Dissolving Injections (Deso Face & Body)

Sculpt and contour from £150, course of 3 for £400

Profhilo & Skin Boosters

Smooth & moisturise from within

Face, Neck, Decolletage and Hands from £200

Discounts for courses booked in advance

Meso-Therapy / Micro-Infusions

Hyalauronic acid, amino acids, vitamins and minerals into your
skin to target: - dryness, fine lines, acne, scars,
hyperpigmentation and hair loss.

Treatments £120 or £300 for 3

pHFormula Skin Resurfacing 'Peels' and Needling Pen

Target fine lines, acne, scars, redness, pigmentation, and skin
laxity. Resurface rather than strip your skin from £120

Proton pen treatment to boost collagen and elastin from £120

Tim Dixon

**Domestic Plumbing
&
Bathroom Fitting**

**01566 784028
07903535881**

careful & reliable service
timdixonplumbing.co.uk

Megan's Home Cleaning!

**10+ years in the
Business**

**Earth Friendly
Cleaning solutions
Weekly & bi-weekly
Slots available
Tel: 07955 805 271**

Robert Easton Decorating

T 01752 769755 | M 07771614856

E Roberteaston72@yahoo.co.uk

31 Colston Close,
Plymouth, PL6 6AY

INTERIOR & EXTERIOR PAINTER & DECORATOR

- No Job Too Small
- Wallpaper Hanging
- Free Estimates
- Time Served Tradesman with 27 Years Experience



**City &
Guilds**



TRUSTMARK
Government Endorsed Quality



*Devon & Cornwall's
Highest Accredited Decorator*

The Blue Lion, Lewdown

Charlie, Nicky, Charlotte, Georgia, Jonty & Alfie
Welcome you to our Family Friendly Pub

☆☆☆☆☆☆☆☆☆☆☆☆☆☆☆☆☆☆☆☆☆☆☆☆☆☆☆☆☆☆☆☆
☆☆
☆☆
☆☆
☆☆
☆☆
☆☆
☆☆
☆☆
☆☆
☆☆
☆☆☆☆☆☆☆☆☆☆☆☆☆☆☆☆☆☆☆☆☆☆☆☆☆☆☆☆☆☆☆☆

*Public House offering good
food, real ales, live music, pool,
skittles, darts and BT Sports*

01566 783238

*For upcoming live music & quizzes etc follow us on
Facebook
Search for 'blue lion inn'*

**Spears Fishleigh
Sanctuary Lane
Hatherleigh
EX20 3LH**

P. S. Electrical

Office - 01837 811112 / Mobile - 07792 163156

**Email - enquiries@pselectricians.co.uk
Website - Okehampton.pselectricians.co.uk
All electrical work undertaken**

Part P approved



S H Joinery

Granite and Quartz worktop cutting and fitting
Cut roofs
Traditional A frames
Kitchen fitting
External bi fold doors
Joinery



Steve Hunt

01566 783228 07974 799062
shjoinery@hotmail.com



Caroline Harris
Bookkeeping Services



Caroline Harris MIAB
Owner & Bookkeeper

Tel: 01566 783 502
Mob: 07866 953 708
cmhbookkeeping@btinternet.com
www.cmhbookkeeping.co.uk

- + Bookkeeping
- + Self Assessments
- + Accounts Preparation
- + VAT Returns



LEWDOWN YFC

**Charity Christmas
tree collection**

SATURDAY 7TH JANUARY

COLLECTING IN
OKEHAMPTON, LAUNCESTON,
HOLSWORTHY AND ANYWHERE IN
BETWEEN!

£5 per tree minimum donation. All
proceeds will be split between FCN
and The North Dartmoor search and
rescue

To book in call/ text Jordan on 07807 706278
or email jordanmartin.okehampton@yahoo.co.uk

All trees are being donated to a local goat farm