

**The Area Magazine for Lewdown, Stowford, Thrushelton,
Lewtrenchard, Chillaton, Coryton & Marystow**

February 2025

community newslink

for all that's going on in your area...



Published by the Lewdown Residents Association

Registered Charity Number: 1071808

Funded by the Subscribers, Advertisers, Sponsors & Area Churches

**Fire/Police/Ambulance
Emergency 999**

All other contact with Police 101

Police Contact/Crime Prevention
PCSO Seonlad Greenwood 101

Neighbourhood & Farm Watch

Horse Watch Gina 01837 840716
Floodline 0345 988 1188

Parish Clerks

Lewdown Grouped
Peter van Delft 01566 783023
lewdowngpc.clerk@gmail.com
www.lewdowngroupedpc.org.uk

Milton Abbot Grouped
Jane Savage
clerk.magpc@outlook.com
www.magpc.co.uk

Stowford
Peter van Delft 01566 783023
stowfordclerk@gmail.com
www.stowfordparishcouncil.org.uk

West Devon MP

Geoffrey Cox 01822 612925

County Councillor

Lois Samuel 01837 851240

Borough Councillors

Milton Ford Ward
Neil Jory 01822 860342
Bridestowe Ward
Terry Southcott 01566 783079
Caroline Mott 01837 861212
Tamarside Ward
Chris Edmonds 01566 784794

Schools

Lewtrenchard 01566 783273
Lifton 01566 784288
Milton Abbott 01822 870273

Colleges

Tavistock 01822 614231
Okehampton 01837 650910
Launceston 01566 772468

Ring & Ride

Okehampton Area 01837 55000
Tavistock Area 01822 618028

Community Groups

Cricket Club 07847111330
Chillaton Football Club 01822 860476
Lamerton Pony Club 01822 860350
Lewdown Past 01566 783396
Lewdown Residents Assoc. 01566 783320
Lewtrenchard WI 01566 783765
Lifton Benefice Churches
Revd Philip Conway 01566 784462
liftonpriest@yahoo.com
Lifton Surgery 01566 784788
01566 784111
Red Spider Company 01409 221376
Recreation Field 01566 783367
Stowford Hall 01566 783223
Victory Hall 01566 783267
Youth Cricket 07847111330
Young Farmers 07443 461344

Advice Helplines

Citizen's Advice Bureau 08444 111444
West Devon Women's Aid 01837 55228
Age Concern 01752 665424
Health Information Line 0800 665544
Homelessness Trust 01822 615259
Parentline 0800 8002222
Relate 01392 275681
Samaritans 08457 909090
Tavistock Area Support Svcs. 01822 616958
Age UK 01822 616958
Transport to Health 01822 617525
Victim Support 01822 820455
Youthwise Okehampton 01837 54004

Shop & Post Office

Copper's PO & Stores 01566 783218
Lifton PO & Stores 01566 784211

Front Cover Picture

Description

On Sunday 22nd December the YFC held it's annual tractor run with just under 50 tractors travelling around Lewdown, Bratton Clovelly and Roadford Lake.

Photo: Becky

newslink archive

www.rawrationsplus.co.uk/lraarchive.html

For us to be able to print and distribute the community newslink it costs approximately £500 a month.

Please make an annual donation of £5+ for yours to:

Account name: **Lewdown Residents Assoc.**
Sort code: **090154**
Account number: **97666081**

Thank you for your support

community newslink

Produced by Lewdown Residents Association

A magazine providing news, information & items of interest for the areas of Lewdown, Stowford, Thrushelton, Lewtrenchard, Chillaton, Coryton & Marystowe

Established January 1999
Issue No. 286 February 2025

Editor: Simon Hedger
St. Anthony's, Stowford, Lewdown, Okehampton EX20 4BY
Telephone: 01566 783765 Email: newslink@hedger.biz

Production, Distribution and Delivery Helpers:
Tim & Sarah Nash, Simon & Monique Hedger, Terry Southcott, Andy McCarthy,
Ruth Dawe, Audrey Jones, Tom Andrews, Mike Bickell, Esther Van Delft,
Rita Squires, Bob Holland, Julie Chick, Coppers Stores, Keith Abayomi-Turner

All news, photographs, reports, events, etcetera for NewsLink need to be sent to the Editor by the 15th of the preceding month.

We welcome your articles / items / advertisements. Though we do our best, we cannot guarantee to publish all that is sent to us.

B&W advertising in newslink is free for Charity events in our local areas.

Adverts for events outside of the area and for businesses are priced as follows:

	Black & White	Colour
1/4 page	£4/month or £40/year	£6/month or £60/year
1/2 page	£8/month or £80/year	£12/month or £120/year
Whole page	£12/month or £120/year	£16/month or £160/year

Please note that advertising prices are subject to VAT at 20%

Well good evening to you all...

...and welcome to the start of my new and improved waffle, which I intend to make more interesting than before, well we can live in hope anyway.

Today is the 6th of January, and so far it's been rain, rain and for good measure this evening sleety snow, so no improvement in the weather for 2025, unless of course you have had the good fortune to be in Jamaica, or Australia, so you won't be able to read this tosh anyway.

Firstly I hope you all had a very happy Christmas, and I would like to wish you all a belated happy and prosperous new year.

I did see the new year in, and the wonderful fireworks from London, this was thanks to my wife's index finger poking me in the ribs at about 10 to 12, waking me from a pleasant nap I was having.

You will be pleased to know that I have been given a Spitfire for Christmas. Unfortunately not a full size actual working one, although they are available on certain Internet web sites for around 5 million pounds, so if you have a spare few shillings available we could set up a fund, I'm sure grants are available as well.

My spitfire is a Meccano creation, so lots and lots of tiny nuts and bolts, which does not bode well for someone with my eye sight. I would imagine that the Dyson will probably eat a few before I finish but there you go.

I also was given a sharing bag of Peppermint Aero, but I can assure you that sharing my peppermint Aero's is never likely to happen unless you come bearing gifts like porky scratchings.

Any way will close now as my son has just put on Star Trek, one of the films with Chris Pine as Captain Kirk. *By the way how many of you know Captain Kirk had three ears?*

A left ear, a right ear, and a final front ear Some things will never improve. Also the original Captain Kirk, William Shatner, is now 93years old.

Best wishes to you all from Tim Nash your Honorary chairperson

PS. What kind of exercise do lazy people do? Diddly squats

What do you call a potato fighting in the colosseum?

A gladi-tater

Soupa Troopers

All welcome to this community event



Wednesday February 12th
Valentines Special

From 12.30pm in Lewdown Victory Hall

Soup and a Bread Roll, Tea or Coffee - £4

Followed by conversation & games



Strictly SOCIAL

DANCE CLUB

Ballroom and Latin classes Tel: 07891 614491

Dance for pleasure, fun and fitness 'Strictly Social' is back at last!!

If you live in or around the Stowford / Lewdown area, why not join us at Stowford Village Hall for a **free taster session** on Thursday March 20th 19:30 to 21:00 (**call to reserve your free place**) to learn and dance Ballroom and Latin style whether you're a complete novice or have danced before and would like to learn and improve your style and range.

Our aim is not only to improve your dancing, but to enable you to enjoy social dances and events throughout the year.

Since the advent of 'Strictly Come Dancing', ballroom and Latin dancing has become a popular and enjoyable pastime and sport for people of all ages.

It's such a good way to meet and gain new friends and acquire a new and lasting skill while also getting to a higher level of fitness and 'feel good'.

So, don't be shy (especially the fellows), come along to one of our classes and **START DANCING!**

Contact Terry: 07891 614491 or Leroy: 07405 47 2931

From the Editor

Happy New Year to you all. We have attempted to modernise our image with a new layout. Please let me know if you like it or would prefer another design.

It's been a year since we asked you all for payment so now its time to request again: Please send your annual subscription to Sarah so we can continue to publish community newslink.

Thank you



The Ark

AT BRIDESTOWE METHODIST CHURCH

Is open for teas and coffee and a chat on
Tuesdays From 10am to 12noon & 2.00pm to 4.00pm
Thursdays From 10.00am to 12noon

Do come and join us, you will be made most welcome.
You will find us on Launceston Road, Bridestowe.



Lewdown

Located in the roadside porch of the Blue Lion, EX20 4DL.
Please note it is not recognised by 999 calls if more than 200 metres away from it. When ringing 999 they will access code to open box.

Chillaton

Located in the Village Square on the wall of No. 1 Barn Cottages, PL16 0HS. The 999 operator will be able to give directions for its use.

Punishment Book

Stowford Church of England School 1935 - 1946



This is the fourth in the serialisation of Stowford's school, one or two family members seem to have continued their unruly behaviour but not just at the school but in the meadow, teacher was watching even after school time! Teacher also had some bad days; children should have realised that maybe it was not a day to be messing about. Peter van Delft.

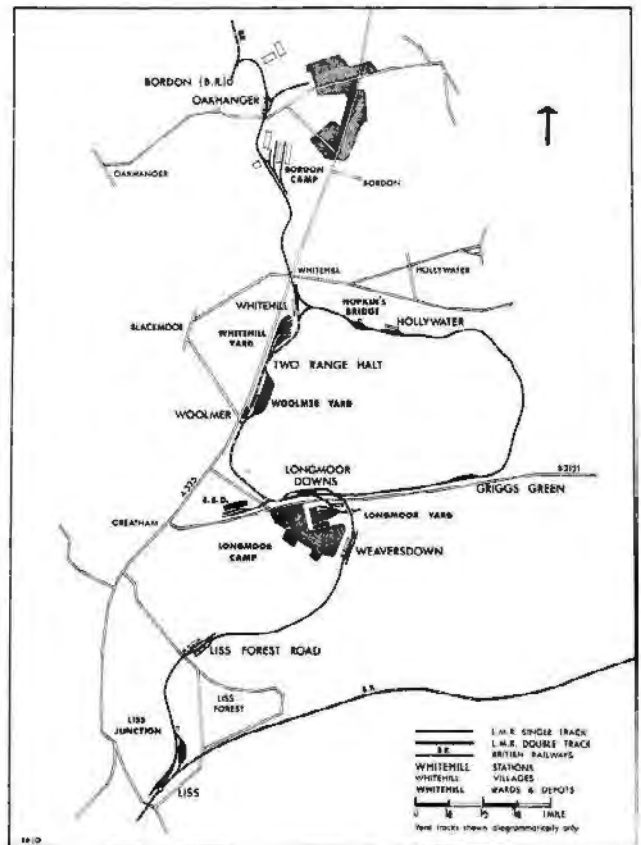
Date	Name of Child	Age	Offence	Amount of Punishment
1937 Nov 15 th	Walter Kennedy	11	Repeatedly late after warnings	One stroke each hand
1938 March 6 th	Gordon Frise	13	Swearing in the meadow	Three strokes each hand
1938 March 15 th	Eric Frise	10	Laughing and fidgeting twice After repeated warnings.	Two strokes and again three strokes each hand
1938 May 9 th	Walter Kennedy	11	Swearing in meadow on Friday	Three strokes each hand
1938 Sept. 15 th	William Wickett	9	Throwing stones in dinner hour	One stroke each hand
1938 Sept 15 th	William Wickett	9	Interfering with sand + blocks, put in new stove	Two strokes cane each hand
1938 Oct 27 th	William Wickett	9	Repeated (above)	Three strokes cane each hand
1938 Oct 27 th	William Woodridge	11	Repeated carelessness	Three strokes on one hand

Reflections of a Steam Fireman

Two more turns in the old mans gang with driver Cox , was a freight to Godalming goods with an N class 2-6-0 The yard was at the old terminus of the line from London which was made obsolete when the Portsmouth Direct line was built ,it was situated between Farncombe and Godalming. The yard was a fair size and busy and the old terminus station was still there, when we stopped for tea we would sit in the porters room at the old station.

Another turn was the Bordon Goods the Branch line from Bentley station a single line .Passenger traffic ceased in the late fifties, the old station was still intact with the military station close by we would shunt the yard and wait for the military engine to come from Longmoor with ordinance for us to take to Aldershot and we give them the wagons that we had bought from Aldershot the military would allow me to ride on their engine an 0-6-0-tank. The Longmoor Military Railway was huge five station many sidings a steam and repair depot and a loop line called the Holywater loop ,Four miles in length which was used to train military drivers on long distance running, they would set off and go round the loop for hours until they needed Water or relief, the idea was, if needed they could assist British Rail in event of war and did so in the 1926 general strike.

The pride of the fleet was Gorden a 2-10-0 Freight engine painted in blue. The military still run a passenger service from Liss to Bordon calling at west Liss, Longmoor, Whitehill, Oakhanger and Bordon.



They filmed The Great St Trinians Train robbery there and Guildford drivers were driving the train with the military drivers, but when close ups were filmed an actor would be in the shot, we supplied a demu set An exciting time with all these young scantily clad ladies that decended upon the area.

The Army Started to allow Enthusiast to store their engines at the depot they had purchased saving them from the scrap man, it seemed the military were going to run down the railway operation .

So a plan was put together to preserve it for Enthusiasts to run a preserve railway on the

military railway but there was fierce opposition from residents of West Liss. So it was not to be.

When Steam had ended in 1967 David Sheppard Artist (Elephants) but mad about steam engine purchased two locomotives and invited us down to welcome his engines at Liss, they had made their way from the midlands couple together under steam. Driver Boxhall from Guildford shed then drove 73029 4-6-0 Standard and a train supplied by the military to Longmoor we all had cab rides including the wives ,his other 2-10-0 standard was driven by the military It was a fantastic day, Guildford loco had quite a association with David Sheppard and so did the military, he had painted a fantastic mural in the garrison church, more in next instalment.

Monday to Friday
8.45am to 3.15pm
2-5 year olds

Led by Lisa Broadbridge
Early Years Teacher

Please phone for availability
Early Years Foundation Unit with plenty
of safe outdoor space.

We accept 2gether funding for 2 year
olds and Early Years Education Funding
for 3 year olds.

Respect
Kindness
Responsibility

FLS

Friends of Low Trenchard C of E Primary School

We have an amazing team that
fundraise to enhance our children's
learning journey. Please see our FLS
Facebook page, school website and
local adverts to support our fantastic
school.

Bingo ~ Bake sale ~ summer/winter fair ~ raffles ~
jumble sale ~ sponsored activities and much more!

Wrap around care

Available for 3-11 year olds

£2 per hour (1/2 hour bookings available)

8am to 8.40 am breakfast club £2 per session

3.15pm to 5.15pm (4.15pm Fridays) after school care including snacks.

For more information, contact the school office on
01566 783273

www.lewtrenchard.devon.sch.uk

Email lewtrenchard@andaras.org



No Bake Chocolate Hearts: Ideal for Valentines Day

Ingredients:

250g ground almonds
150g granulated sugar
120g finely grated good quality chocolate
2-3 tbsps. Kirsch
2-3 tbsps. Water

Method:

Add almonds and sugar to a bowl, add finely grated chocolate, then the Kirsch and water, now mix and combine to a dough.

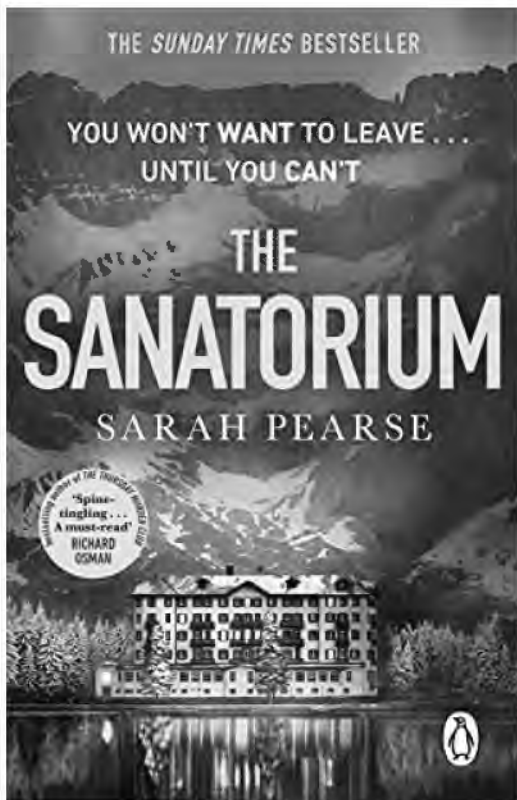
Sprinkle granulated sugar on to your worktop and roll out dough on top of the sugar, $\frac{3}{4}$ cm thick.

Cut out heart shapes, place on non-stick baking paper and dry out overnight.



Book of the Month for February 2025

The Sanatorium by Sarah Pearse



Everyone's in danger. Anyone could be next.

An imposing, isolated hotel, high up in the Swiss Alps, is the last place Elin Warner wants to be. But she's taken time off from her job as a detective, so when she receives an invitation out of the blue to celebrate her estranged brother's recent engagement, she has no choice but to accept.

Arriving in the midst of a threatening storm, Elin immediately feels on edge. Though it's beautiful, something about the hotel, recently converted from an abandoned sanatorium, makes her nervous - as does her brother, Isaac.

And when they wake the following morning to discover his fiancée Laure has vanished without a trace, Elin's unease grows. With the storm cutting off access to and from the hotel, the longer Laure stays missing, the more the remaining guests start to panic.

But no-one has realized yet that another woman has gone missing. And she's the only one who could have warned them just how much danger they're all in...

Publisher: Transworld Publishers Ltd
ISBN: 9780552177313

Valentine's Day cocktail



Combine cranberry juice, vodka, raspberries and prosecco to make this ruby-red cocktail. If romance is in the air, it's the perfect tipple for Valentine's Day

Ingredients

150ml cranberry juice
1 tsp grenadine
50ml vodka
handful of ice
1 lime wedge
4 raspberries
chilled prosecco
or sparkling wine, to
top up



Method step 1

Mix the cranberry juice, grenadine and vodka together in a jug with a handful of ice. Or, do this in a cocktail shaker. Squeeze over the lime wedge and stir with a mixing spoon, or shake briefly if using a cocktail shaker.

Method step 2

Strain the cocktail into two champagne glasses. Drop two raspberries into each glass, then top up with prosecco or sparkling wine to serve.



Thanks to Judy & Julia for organising the **70's and 80's Evening** in Stowford Parish Hall on January 11th. Great fun

was had by all, with profits going to the British Heart Foundation. It was a fun evening that will hopefully be repeated again shortly.



Lewdown Exchange Project

UK Gigabit Voucher Scheme
Funded by UK Government

Our community has reached 85% of the required target for Openreach to commit to providing us with **High Speed Gigabit** Internet access.

If another 21 households sign-up we will reach the target.

Go on visit: www.openreach.com/connect-my-community and sign-up.

Stowford's



at Stowford Parish Hall

Thursday 13th February 7.30pm

£4 per person at the door Teams of 2 - 6 people

Bring your own drinks, we provide the nibbles.

(All profits go to charity)



STOWFORD COMMUNITY COFFEE MORNING

Support this new venture and come and meet your
neighbours for a coffee, cake and catch up!

When?

10am - 12noon on the first Tuesday of every month.

Where?

Stowford Parish Hall.

Cost?

£3 per person (cash only) which includes a hot drink and cake.

Profits will be donated to a charity chosen by SCCM.

All friends and family welcome.

If you need help with transport, please contact Sarah on
07801 106702 or Tracy on 07973 327161





It's been a busy few months for Lewdown with Carnivals, Pumpkin carving, Adventure golf & many dinner and dances including our group D&d where we came 2nd in most points speaking.

More recently we held our annual Christmas poultry bingo on the 10th December which was another great success with around 130 people in attendance , raising nearly £1,650 for our 3 chosen charities.

We also had our Christmas meal on Saturday 14th with around 20 members attending, thanks to the Clovelly Inn for hosting!

On Sunday 22nd December we held our annual tractor run with just under 50 tractors travelling around Lewdown, Bratton Clovelly & Roadford Lake. A huge thank you to Eddy Vigers for leading the route again and to all the stewards for helping out! We raised just under £600 for our charities.



The first weekend of January saw our christmas tree collection back for another year collecting around 80 trees raising money for our 3 charities this year.



We have various tours and fun activities planned along with more charity events. A busy few months ahead!



Soupa Troopers



March 2025

We are pleased to announce that again we have been awarded support by Lewdown Grouped Parish Council & West Devon Borough Council and will be able to offer Soupa Troopers at the reduced rate of £2/person.

Lewtrenchard WI



Coffee, Cake & Shopping Event

Saturday March 8th 10:00 to 12:00

Lewdown Victory Hall

Entrance £5 (£3 children) includes a coffee/tea and slice of cake

Meet up, have a chat, browse our stalls:

*** Clothes * Books * Cakes * Toys * Crafts ***

We look forward to seeing you

theWI
INSPIRING WOMEN

In aid of Lewtrenchard WI funds



Like most cricket clubs we have been dormant through the winter, but now preparations are under way for the coming 2025 season. We plan to have two teams on a Saturday playing in the Devon Cricket League. These teams are open to players from age 14+. We always welcome new players and there are opportunities to come and give things a go in the next few weeks. We have organised Winter Nets at Launceston College for current and new players :

2025 WINTER NETS

Thursday 20th February (20.00-21.00)

Thursday 27th February (20.00-21.00)

Thursday 6th March (20.00-21.00)

Thursday 13th March (20.00-21.00)

Thursday 20th March (20.00-21.00)

Thursday 27th March (20.00-21.00)

There will be a small charge to cover the cost of the hall hire. For further details about the net sessions please call or message Keith Maynard 07368 654932

JUNIOR CRICKET will begin during April with Friday night sessions at the club. More details will be available soon. We plan to have competitive cricket across the age-groups in the newly formed West Devon Junior Cricket League but we do need parent volunteers to make this possible.

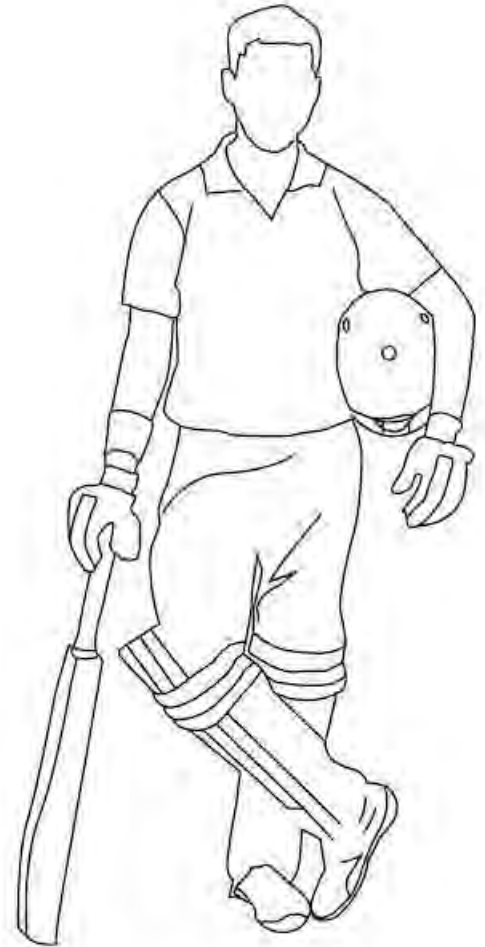
Like all community clubs we rely heavily on volunteers and the generosity of local people and businesses. We passionately believe that sport can be a power for good in our community. If you feel you can help in any way there will be plenty of opportunities to do so in the coming weeks. Whether it is simply buying a 50/50 draw ticket, offering to help maintain the pavilion, doing some strimming or assisting at junior training sessions....any help will be appreciated !

Club Contact:

Geraint Williams 07850 786310

Junior Cricket Coordinator:

Mike Maynard 07974 756136





Cook Islands 2025 World Day of Prayer

The message that we, as women and girls, are “fearfully and wonderfully” made in the image of God reinforces our movement's support of women in expressing their faith and speaking about their lives in prayer and worship before God and in community.

Friday March 7, 2025

Everyone Welcome

2.30pm

Thrushelton Church

From the COOK ISLANDS

(practice February 28th 2.30pm)

Farming Report

With the new year now upon us it brings calving and lambing and the joys of bringing new life into the world. On my family farm we



keep Pedigree South Devon cows and are very patiently waiting for the first calves of the year. We personally don't lamb but several farms around us are beginning to start lambing and taking the ewes and lambs out to the fields to experience the outside world, let's hope the weather stays nice for them.

There are also lots of pregnant ewes in the fields so it's important to highlight please keep your dogs on leads if you are walking near sheep and in fields.

The weather has been very wintery bringing more snow and cold weather, which can cause disruption to farms but as always, the animals come first and will

always be well looked after whether inside the sheds or outside in the fields.

As the weather does stay dry we can start getting the winter muck out to bring the grass on for the spring months, for our store lambs fattening and in a few months time when the cattle can be let out. A lot to be done before then though! Until next month...

Becky Dennis

Chairman Lewdown YFC

Stowford Parish Council



Abbreviated minutes of Ordinary meetings held on 12th November 2024

These minutes are provisional until they are signed by the chair at the next meeting of the parish council.

Meeting No 729

Present: Cllrs Leroy St Louis (Chair), Law (vice chair) Alexander & Lorna St Louis, Cllr Edmonds (WDBC), P van Delft (clerk).

Meeting opened 7.30pm

1. The chair welcomed all those present and proceeded to introduced the Openreach Reginal Engagement Manager.
2. Broadband fibre - The R.E.M. for Openreach provided a detailed presentation including questions and answers, details of how the voucher scheme works, how to register and what is meant by the commitment. Details of how to pledge your voucher can be found on www.openreach.co.uk/connectmycommunity. The copper landlines are due to be switched off January 2027. If there are sufficient pledges, the Openreach network will be completed within 12-18 months from when it is started to be built.
3. Apologies - Cllr Govett
4. Dispensations & declarations of interest - none
5. Members of the public open forum 6 members present
6. Minutes of previous meeting 728 were signed as a true and accurate record of that meeting, proposed Cllr Alexander, seconded Cllr Law, all in favour.
7. Finance -
 - 7.1 Payments approved Vision ICT - Annual website support £161.26, P van Delft - clerk salary (Oct/Nov) £331.85, HMRC - PAYE for clerk £11.40, Stowford Parish Hall - hall hire £42.00, Royal British Legion - wreath £20.00, WDBC - Election recharge (direct debit) £66.86. Proposed Cllr Alexander, seconded Cllr Lorna St Louis, all in favour.
 - 7.2 R.F.O. Reported a credit balance of £5639.64 after approved payments. Proposed Cllr Law, seconded Cllr Lorna St Louis, all in favour
 - 7.3 New bank charges - New fees from 14th January 2025 - It was resolved that if possible, an alternative bank is sought. Proposed Cllr Leroy St Louis, seconded Cllr Alexander, all in favour.
 - 7.4 Draft budget 2025-26 was detailed by the R.F.O, to maintain a balanced budged a provisional budget of £3600 would be required. It was resolved to wait until the January meeting when the WDBC calculator is available to the council, a decision will be made at that time.
8. Cllr Edmonds of WDBC reported that the council external audit was favourable and that work had begun on the 2025-26 budget. The new Okehampton Railway station project is due for completion in February 2026.
9. Nuisance dog off lead - Parishioner complaints, action plan to deter, owners responsibility. Cllr Leroy St Louis informed that this particular issue was much bigger than originally thought. There had been several encounters of dog harassment including dog fouling around the village. From advice provided by WDBC, a Mobile Liaison Officer has been contacted with patrols to commence shortly. The M.L.O. will patrol the area with the aim of educating dog owners of their responsibility. Cllr Leroy St Louis hoped that the issue will be resolved once offending dog owners have considered the advice given by the M.L.O. Cllr Law enquired if the offences included working dogs such as farm dogs and hounds, Cllr Leroy St Louis confirmed that working dogs were not included in the patrols.
10. Reports from Councillors - Cllr Alexander reported that the grit bin on the Stowford Rise lane was empty and in need of grit however Devon Highways informed that that particular bin was not on their register so would not fill it. The clerk to enquire further. Cllr Alexander also reported that parked vehicles in the vicinity of Chillaton Cross junction had and continues to cause a serious hazard in that area. Letters of support for a review of parking in that area to D.H. should be sent to the clerk of Milton Abbot. If anyone has evidence relating to issues of parked vehicles in that area that would also be great fully received.
11. Parish Councillors vacancies - Cllr Law thought that a parishioner may be interested, she would talk to the parishioner further. Cllr Leroy St Louis also discussed a vacancy with another parishioner, further discussions to take place.
12. Parish Questionnaire - draft questions and reply box - held over to next meeting
13. Table Tennis - Council initiative to help with health & fitness. Purchase of equipment. held over
14. Council meeting dates 2025 were circulated to councillors.
15. Correspondence - Landmark Tree - free tree offer - held over, Airband notice - held over.
16. Road sign damage - highways - held over

Meeting closed 9.38pm

Date time and place of next meeting - 14th January 2025 - 7.30pm at Stowford Parish Hall

Lewdown Grouped Parish Council
Coryton, Lewtrenchard, Marystowe and Thrushelton
Abbreviated minutes Minute No 782 Monday 25th November 2024
of Ordinary meetings held at Lewdown Victory Hall

These minutes are provisional until they signed by the chair at the next meeting of the parish council

Present: Cllrs Andrews (Chair), Southcott (vice chair), Alexander, Metherell, Mincher, Perkins, Yeo, Cllr Mott (WDBC), P van Delft (clerk). Meeting opened 7.30 pm

1. The chair welcomed all those present
2. Apologies for absence - Cllrs McSmythurs, Wilkinson (Cllr Alexander left meeting 20.10)
3. Members of the public open forum - no members present.
4. Dispensations & declarations of interest - Cllr Alexander item 8.
5. Minutes of previous meeting 781 being a true reflection of that meeting were approved and signed by the chair. Proposed Cllr Southcott, seconded Cllr Alexander, all in favour.
6. Finance -
 - 6.1 Payments were authorized for the following outstanding invoices: Dean Elliot - Grass cutting (Oct-Nov) £60.00 P van Delft - Clerk duties (Oct-Nov) £617.85, HMRC - PAYE £113.40, Lewtrenchard PCC - Graveyard maintenance Grant £250.00, Marystow PCC - Graveyard maintenance grant £250.00, Thrushelton PCC - Graveyard maintenance Grant £250.00. Proposed Cllr Southcott, seconded Cllr Metherell, all in favour.
 - 6.2 R.F.O. reported a combined credit balance of £23,165.54 after payments. Proposed Cllr Alexander, seconded Cllr Yeo, all in favour
 - 6.3 Grant applications - Coryton PCC requested a grant to help with the maintenance of the graveyard. Cllr Mincher proposed a grant of £250 in line with the other PCC's, motion seconded by Cllr Alexander, all in favour.
 - 6.4. Draft budget 2025-26 - The R.F.O. provided details of the anticipated costs for the following financial year. Cllr Alexander suggested increasing further the projected insurance premium and DALC fees as it was thought that these were a little low, R.F.O. to revise and resubmit a proposal at the next meeting.
7. Planning app. 3313/24/HHO - Householder application for erection of garage cabin and erection of glass canopy with associated works. Warracott Orchard, Chillaton, PL16 0HE. Council decision - No comment - Proposed Cllr Mincher, seconded Cllr Perkins, Cllr Southcott abstained, remaining councillors were in favour.

Planning app. 3055/24/LBC - Listed building consent for installation of vertical slate tile cladding to a section of the south elevation. The Old Vicarage, Chillaton, PL16 0JA. Council decision - Support - Cllr Metherell, seconded Cllr Yeo, all in favour

Planning app. 3387/24/HHO - Householder application for demolition of existing conservatory and erection of a 2 storey extension. The Crest, Portgate, Lewdown, EX20 4PU. Council decision - Object - Proposed Cllr Perkins, seconded Cllr Mincher, all in favour.

Planning app. 3625/24/VAR - Application for variation of condition 5 (schedule of works) of planning consent 2021/24/LBC. Lewtrenchard Manor, Lewdown, EX20 4PN. Council decision - Support - Proposed Cllr Mincher, seconded Cllr Metherell, all in favour.
8. Play area - Planning application, lease update, play equipment - Cllr Perkins reported that Peter Thomas the new Baring Gould Trust agent had been contacted and is awaiting a response.
9. Council meeting dates for 2025 were reviewed and agreed.
10. Free tree offer - Placing and planting of the free tree, the clerk reported that a Betula pendula or Betula pubescens would be delivered shortly. Planting in the verge in the vicinity of the dead cherry tree at the junction opposite Stowford Cross. Clerk to ask permission from D.H.
11. No reports from Cllr Mott (WDBC) were available for this meeting.
12. Reports from councillors - Cllr Alexander reported that at the Milton Abbot G.P.C meeting, discussion took place regarding the hazard of parked vehicles on the highway from Chillaton to Tavistock at the corner by Chillaton Garage, several accidents and near misses had taken place, also the parked vehicles posed a hazard for the emergency vehicles needing to attend incidents. Cllr Alexander proposed that the council should support Milton Abbot in their endeavours to restrict parking on that particular stretch of highway since it is a danger and likely to cause a potential accident, motion seconded Cllr Perkins, all in favour. Clerk to write to the chair of M.A.G.P.C. and Cllr Neil Jory (WDBC) ward Cllr for Milton Abbot. Cllr Perkins reported that flooding was a problem at Coryton Station junction, clerk to report to D.H. Cllr Mincher reported that storage containers had now finally been removed at land adjacent to the Cross Roads housing estate however some building materials and equipment were still on site. Cllr Mincher also reported that recorded waste water flooding outages were now available on the Rivers Trust website <https://theriverstrust.org>.

cont...

Cllr Mincher also reported that some of the lettering on the village milestones and boundary markers had become illegible, clerk to contact D.H. Cllr Yeo reported that defibrillator training was available at Lewtrenchard school on 28th November. Cllr Southcott reported that V.A.S. was in "Spy mode" to comply with highway regulations, a top speed of 98mph had been recorded. Motorcycle police has been present on a few occasions and will continue to monitor motorist's speeds at random times.

13. Councillor vacancies for Coryton and Marystow - no interest this month.
14. S.S.L. protection & certification for the PC website. It was resolved that whilst S.S.L was appropriate for some parish councils it would not be of much benefit for the pc since it had no information on its website that could not be otherwise available elsewhere in the public domain.
15. Correspondence - Consultation on remote voting - Cllr Southcott informed that the proposal was of concern since "Part 2" at meetings could not guarantee that members of the public were not absent at that meeting, other aspects of the proposal were also of concern, Cllr Southcott recommended that councillors should take part in the consultation and comment on the proposals.

Meeting closed 9.20pm

Date, place and time of next meeting 27th January 2025 at Lewdown Victory Hall, 7.30pm



**Torridge, North,
Mid & West Devon**

Happy New Year!

Inevitably perhaps, debt and energy are the two key problems people are bringing to us. The cost of living continues to rise, pensioners missed out on winter fuel payments they have come to rely on and energy costs continue to rise. If you are struggling and getting into debt please

take action sooner rather than later. Our specially trained debt advisers can help you navigate what seems a minefield and remember, our advice is confidential, professional and totally non- judgemental. Our website has some useful links and information so check out: www.citizensadvicetnmwd.org.uk

We are also able to issue fuel vouchers please get in touch to see if you are eligible. Our AdviceLine is a free, local number: **0808 27 87 999**.

We are delighted to announce that we have new outreaches opening this year so people can access us directly in their own area. In Crediton we are at the Age Concern office in the Lady Mills Centre every Wednesday. Drop-in is available 9.30am – 12.00noon and afternoon appointments are available which can be booked via our website. We are at the Cullompton Community Centre on the 3rd. Friday of each month between 9.30am and 12.30pm. The last Friday of each month sees us at Lapford in the Ark Community Café from 10.00am – 2.00pm. Ongoing dates have still to be confirmed at Uffculme and Hemyock however, on 17th. January we will be at Warm Spaces on Square Corner in Uffculme between 10.30am and 3.00pm and we will be at the Blackdown Support Group Building (next to the GP surgery) in Hemyock on 23rd. January from 10.00am – 2.00pm. Details of all our opening hours in Bideford, Barnstaple, Okehampton, Tiverton and Tavistock as well as our other outreach offices are on our website and news of our new outreach offices can be found on social media.

Sadly, we are unable to meet demand which continues to rise as more and more people seek our help. We have an ongoing recruitment campaign to encourage more people to come and volunteer with us. Volunteers make new friends, learn new skills and have the satisfaction of knowing that they are helping people in their community. If you are interested in joining us as a volunteer, please contact recruitment@citizensadvicetnmwd.org.uk or check out our website for more information. Maybe the New Year is an ideal time to broaden your horizons!

LAMERTON PRE: Point 2 Point Horse Racing 2025 □



DIG OUT YOUR DABBERS!!
MONDAY 3RD MARCH 2025

LEWDOWN VICTORY HALL
Lewdown Devon

**Grab your seat! Doors Open 7pm
Eyes Down 7.30pm**

£10 for 8 Game Card • Extra Games • Raffle
Win Fresh Chickens for Full House
With prizes for 1 line & 2 lines!!

WIN 3 PICNIC HAMPERS

to include p2p passes for the P2P at Kilworthy nr Brentor



on 23rd MARCH 2025 □

Puzzle Pages

Be My Valentine:

Freddie was in love - with three girls from his school! He couldn't decide which one he wanted to give his heart to so he sent all three a Valentine's card. But poor Freddie was out of luck - each girl thought the card came from someone else and Freddie was left on the sideline.

From the clues below, can you work out the name of each potential sweetheart, the colour of each card Freddie sent and the name of the boy each girl believed the card was sent by?

- 1. Unluckily for Freddie, when Miss Jetson received her card, she thought it was from Adam.
- 2. When Molly received her blue coloured card, she told Miss Hanson and together they worked out who the card was from. It didn't occur to either of them that it was from Freddie!
- 3. The girl who received the red card was convinced it came from David.
- 4. Neither Millie nor Miss Motson received a pink card.

First Names: Lily, Millie, Molly
Surnames: Hanson, Jetson, Motson
Colours: Blue, Pink, Red
Boys: Adam, John, David

How Are These Items Related:



Answers next month...

February's Evil Sudoku

					1		9	
5							6	
		9	3	7				
9		6		5		3		
1		5	9			7		
	2							
					2		1	7
				4				
3			1	9	6		2	

December/January Quiz Answers

The lampposts are the number 15, the snowmen are the number 4 and the trees are the number 3. Then in the last equation, a light post with only one light would represent the number 5. If you go by the order of operations, 3 multiplied by 4 is 12. Then, if you add 15 and subtract 5, you'll get 22.

The pairs that are identical

- 1 and 12
- 2 and 11
- 3 and 10
- 4 and 9
- 5 and 8
- 6 and 7

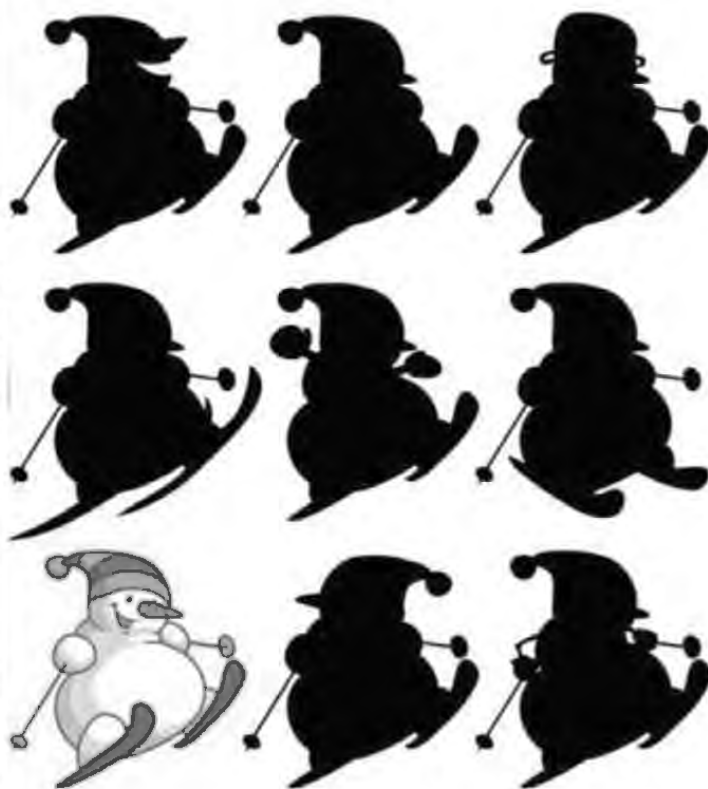
Sudoku

3	5	1	6	7	2	9	8	4
4	6	9	8	3	1	2	5	7
2	8	7	5	4	9	6	1	3
6	9	2	4	1	5	3	7	8
8	1	5	7	6	3	4	2	9
7	3	4	9	2	8	5	6	1
9	4	6	1	5	7	8	3	2
5	7	3	2	8	4	1	9	6
1	2	8	3	9	6	7	4	5

Spot the Difference



Skiing snowman





Point-To-Point Horse Racing

**Sunday 23rd March
Kilworthy, Brentor,
nr Tavistock**

First Race 1pm

Large Screen for Better Viewing

Trade stands welcome together with sponsorship

Bar • Bookmaker's • Refreshments

£15 per person children free

Parking for blue badge holders

Dogs welcome on leads

Contact Mrs M Lewis: 07975 536930
mariaracing@outlook.com

The Life of a Model Railway Buff

Part 1: I was born at a time when steam trains were fascinating to little boys and I would gather with friends at stations or along the rail routes trying to spot the different engines. For each one we saw we would record its number in our notebooks, competing to have seen the most. If we were lucky we would have a model railway we could set up at home. My first layout was a Hornby Dublo train set composed of an oval of track made up of straight pieces and specific curves. The train was "driven" by an electric transformer feeding power to the track, which you could increase and decrease. Dublo or "OO" gauge referred to the size of the engines and rolling stock, which were a ratio of 1:72 of full-sized items. Eventually I had a bespoke layout made for me which folded down from the wall above my bed. I made and added model buildings such as stations, signal boxes and houses and landscaping such as trees, fences and roads. My Matchbox cars were just about the right size to go on the roads. When I became an adult I built the same set up for my nephew.

Here are a couple of photos from 1977



Dublo Boy



The North Tamar Mission Community



St. Mary the Virgin,
Kelly with Bradstone

St. Mary the Virgin,
Lifton

St. Nicolas,
Broadwoodwidge

St. John the Baptist,
Stowford

St. George,
Thrushelton

St. Peter,
Lewtrenchard

Ministers

Lifton, Broadwoodwidge, Stowford, Lewtrenchard, Thrushelton & Kelly with Bradstone United Benefice

The Revd. Philip Conway, 01566 784462 liftonpriest@yahoo.com
The Rectory, Parsonage Court, Lifton PL16 0BJ

Milton Abbot Benefice

The Revd. Andy Atkins, 01822 870298 andya4jc@gmail.com
The Vicarage, The Parade, Milton Abbot PL19 0NZ

Churchwardens

Lifton - St Mary's

Mrs E Brown 01566 784386

Sarah Chandler

Broadwood - St Nicholas

Mr D Perkin 01566 776758

Stowford - St John the Baptist

Mr C Chick 01566 783223

Lewtrenchard - St Peters

Mrs A Westlake 01566 783909

Mrs R. Dawe 01566 783127

Thrushelton - St George

Mr A J Nash 01566 783274

Mr T Nash 01566 783320

Kelly with Bradstone - St Mary's

Mr W Kelly 01822 870393

Marystowe - St Mary the Virgin

Amy Harrowell 01822 860181

Joy McSmythurs 01822 860630

Coryton - St Andrews

Mr G. Vicat 01822 820254

Mrs J Whitfield 07989 666427

From the Parish Priest

Dear Friends,

A new year is always a time for looking forward with hopes, and resolutions, and for beginning new things.

At the start of the Church's year we launched our new Saturday night worship service at Kelly. I commend it to you as we continue our pilgrimage of discovery with our Vigil liturgy.

I am delighted to announce another new initiative in our worship together.



February sees the start of our new GIFT service (Growing In Faith Together).

This is a new venture for us and is a service designed particularly for those who are very young, and those who live with them and care for them. That does not mean that those of us who are older in years cannot learn from it, or grow in it, and I invite you all to come and join us in this new venture at St. John the Baptist Stowford on the third

Sunday of each month starting on the 16th of February. The service will be short, fun, and very different, with fellowship refreshments and fun afterwards.

With love and prayers,

Philip

Service times for February 2025

Any updates will be posted on the Mission Community Website <https://north-tamar-churches.org>

2nd February The Feast of Candlemas
6pm on the eve Special Celebration Vigil Eucharist at Kelly
9.30am Parish Eucharist at Lifton
11.15am Parish Eucharist at Stowford

9th February The Fourth Sunday before Lent
6pm on the eve Vigil Liturgy at Kelly
9.30am Parish Eucharist at Broadwoodwidger
11.15am Parish Eucharist at Lewtrenchard
4pm Evensong at Lifton

16th February Third Sunday before Lent
6pm on the eve Vigil Liturgy at Kelly
9.30am Parish Eucharist at Lifton
11.15am “Growing In Faith Together“ at Stowford
A service especially for the very young and those who care for them.

23rd February Second Sunday before Lent
6pm on the eve Vigil Liturgy at Kelly
9.30am Parish Eucharist at Thrushelton
Morning Prayer at Lifton
Morning Prayer at Broadwoodwidger
11.15am Parish Eucharist at Lewtrenchard

Wednesday Morning Eucharist: 10.30 at Lifton

There will be some occasions when the Wednesday Morning Service will be a service of Morning Prayer.

Bridestowe Methodist Church

Preachers for February 2025

2nd	Drop in the Ark	10:30 - 12:30
9th	Bridestowe Worship Group	11:00
16th	A Morgan US	11:00
23rd	R & J Richey S	11:00

St. Mary the Virgin, Marystowe

Please see the church website www.southtamar.church
for details about services.

Services are also available online from 6pm on Sundays.

Quakers

Meeting for Worship:

Tavistock

Every Sunday 10.00am.

4 Canal Road

Tavistock

Contact: Kay Nicholson
01822 614596

Okehampton

Second Sunday 10.30am.

Fourth Sunday 10.30am

Second Sunday Children's Meeting

Ockment Centre

North Street

Okehampton

Contact: 01837 55805

Roman Catholic Services

Tavistock

Sunday 9.15am

Holy Days 10am

Fr. Greatbatch 01822 612645

(P. Sparling 01822 860355)

Okehampton

Saturday 6pm

Sunday 11am

Chagford - Sunday 9.00am

Fr. A. K. Gundabathina 01837 52229

anil.gundabatina@prcdtr.org.uk

Launceston

Sunday 10.30am

Holy Days 7.30pm

Canon John Deeny 01566 773166

St. Peter's, Lewtrenchard invite you to
a 'Pie, Pudding and Pint night'
with a quiz thrown in for free



to be held at **Lewdown Cricket Pavilion**
on **Saturday 22nd February at 7.00pm**
The bar will be open for refills
and other drinks

**Tickets £12.50 to include the
Pie, Pudding and Pint**

Teams of 4 for the Quiz

Tickets available from
Lynn Atkinson on **07794548447**

**ALL PROCEEDS TO ST. PETER'S
FABRIC FUND**

Gardening Jobs For February

Happy new year, 2025 is here! Another growing season will soon be on us, even if it still feels like spring is a very long way away.

Seeds

It's a good idea to review your stock of seeds before the growing season gets underway, check for any packets which are almost empty or that have been hanging around too long.

Make a list of the seeds you've got and start to build a shopping list of seeds you need. As spring gets going there are plenty of other jobs to do and you can easily miss the sowing dates for a particular crop by not being ready. I have filled a module tray with soil only to realise there aren't enough seeds in the pack to fill the tray..

Have another flick through the seed catalogues or pop down to the local garden centre to pick up fresh packets of anything you're missing, or if you're like me, keep an eye out for any online sales to pick up some last minute bargains.



Start your chillies

Don't be tempted to start sowing seeds too early, I wait until March before I really get going, but even then a lot of plants are best sown a bit later and soon catch up.

The one exception is chillies, which need a long growing season in order to produce a good crop. Chillies require warmth to germinate, and whilst an electric propagator would be ideal, I find a plastic propagator on a sunny window sill usually does the trick.

Once young seedlings start growing they will need to be pricked out and then potted on, keeping them from getting leggy can be tricky when light levels remain low into March. So I recommend planting the young plants deeply and burying the stem, combined with keeping them on the brightest window sill in the house should do the trick.



Quick fire tips for February

- While it is far too early (and far too wet) to think about digging over your beds, you can create no dig beds all year round. All you need is a suitable space, some cardboard to lay on the ground and a good layer of compost to put on top.
- Like with the seeds I mentioned above, it's important to make sure your tools are ready to go. Secateurs can be sharpened, wooden handles can be oiled and gloves can be cleaned. Doing these jobs now should then keep you going for most of the season.

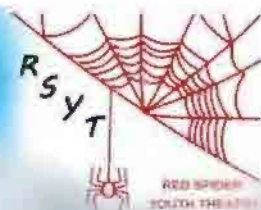


May the weather be with you!

Liam

RED SPIDER YOUTH THEATRE

PRESENT:



The Magician's Nephew

By C S Lewis

Adapted for the stage by Glyn Robbins

The first magic tale in the Chronicles of Narnia

LEWDOWN VICTORY HALL

Friday, 21 Feb – 7pm

Saturday, 22 Feb – 3pm

BOX OFFICE: 01409 221409

ONLINE: www.seaty.co.uk/RSYTFEB

ADULTS: £8

UNDER 12s £4

Tickets on the door subject to availability

Amateur performance rights courtesy of Concorde Theatricals.

TORQUAY TAXIS Ltd

**AIR AND SEA PORT
TRANSFERS**

luxury comfortable transport

Door to door service

All air and sea ports covered

Reliable service

Competitive prices

18 years established

Call Jared Spencer

07830360341

01566 451442

**ROGER
WONNACOTT**
GROUND & GARDEN MAINTENANCE

- ▲ GENERAL GARDEN MAINTENANCE
- ▲ SERVICES RENEWED & REPLACED
- ▲ LEAK REPAIRS & TROUBLESHOOTING
- ▲ MOLE / GRUNDOMAT WORK UNDERTAKEN
- ▲ MOLE & COMPRESSOR AVAILABLE



- ▲ COMPLETE JOB PRICING OR HOURLY RATES
- ▲ FULLY INSURED & BASED NEAR LAUNCESTON

07919 912776

rwonnacott@hotmail.com



supplier of
HARDWOOD LOGS
cut and split to your
requirements

Tel. Colin Bennett:

01822 487259

Mobile:

07523172369

**Lewdown
Victory Hall**

Bookings contact

Roy Stacey

on 01566 783267



Broadbury Landcare

All aspects of Garden Maintenance
and Landscaping

Fully Qualified Fully Insured Free Estimates

18 Years Experience

Andrew Barton 07532 216216

Raw Meat Animal Feed For **Dogs & Cats**

Convenient blocks *Frozen to preserve*

Natural, just meat or meat and bone

No Preservatives, No Artificial Colouring's
(both can be harmful to your animal)

Raw Rations Plus



For information or to order

website: **www.rawrationsplus.co.uk**

Phone: **07831309666 or 01566783079**

Email: **sales@rawrationsplus.co.uk**

Post: Fairview Bungalow, Lewdown,
Okehampton, Devon EX20 4DL



A C WORTH BUILDERS



GENERAL BUILDERS, DECORATORS,
PLUMBING & HEATING,
PURPOSE MADE JOINERY etc.

Kirtonia, Vale Down, Lydford DEVON EX20 4BB

Email: acworthbuilders@aol.com



Tel: 01566 783282
Keith: 07778 471648
Andy: 07867 524515



Registered House Builder

TINHAY

BUILDING SUPPLIES LTD

Supplying quality building materials to the trade and DIY

We're bigger than you think

Lifton

Tinhay Mill Industrial Estate, Tinhay, Lifton, Devon PL16 0AH

Telephone: **01566 784385**

Email: lifton@tinhaybuildingsupplies.co.uk

Launceston

Newport Industrial Estate, Launceston, Cornwall PL15 8EX

Telephone: **01566 771989**

Email: launceston@tinhaybuildingsupplies.co.uk

Tavistock

Pixton Lane, Tavistock, Devon PL19 8DH

Telephone: **01822 619509**

Email: tavistock@tinhaybuildingsupplies.co.uk

FREE LOCAL DELIVERY   www.tinhaybuildingsupplies.co.uk

CBL STOVES

The Showroom, Unit 5
Red Post, Bude, Cornwall
EX23 9NW

01288 381852
carl@cblstoves.co.uk
www.cblstoves.co.uk



- Stainless Steel twinwall flues
- Chimney Lining
- Iskoern Pumice lining
- Fireplace alterations
- Stove Installations
- Wood, Multifuel, Gas & Electric Traditional & Contemporary Stoves & Fires
- Chimney Rebuilds
- Slate, Granite & Glass Hearths
- Wood & Ceramic beams & surrounds
- Floating Shelves



Tim Dixon

**Domestic Plumbing &
Bathroom Fitting**

01566 784028

07903535881

careful & reliable service

timdixonplumbing.co.uk

Megan's Home Cleaning!

**10+ years in the
Business**

**Earth Friendly
Cleaning solutions
Weekly & bi-weekly
Slots available**

Tel: 07955 805 271

MARK CHIVERS - SOLE TRADER

Highly skilled carpenter with over 40 years
experience, including but not limited to:

INTERIOR

**KITCHEN • BATHROOMS • BEDROOMS
FLOORING • DOORS • WALLS**

EXTERIOR

**FASCIA & SOFFIT • GUTTERING & DOWNPIPE
WINDOWS (including sash repairs) • FENCING**

FREE ESTIMATES - UNDER NO OBLIGATION

The best price and best service for your budget
Please Do Not Hesitate To Contact Me With Any Enquiries:



CARPENTRY & JOINERY

**Mobile: 07804 104812
(8am-7pm)**

**Home: 01566 783743
(9am-5pm)**

**Email any time:
m.c.carpentry@outlook.com**



☎ 07836 760060

☰ BrowningsCarpentry@gmail.com

**All Aspects of Bespoke
Carpentry & Joinery**

📘 Browning's Carpentry & Joinery

Chair Yoga for Seniors

with Yogajeanie

Chair yoga helps with
Muscle toning
Reduced stress levels
better breathing habits
better sleep
overall sense of well-being
It's fun too!

Interested?
Just come along in comfy clothing

At Lewdown Village Hall
Thursday's
from 10:00 am -11:00 am
£7 per class

For more information contact
jeanharris50@hotmail.com
Mobile 07929 278788



R Mears & Sons

Chimney Sweeps & Stove Installation

Established over 30 years

Vac Brush. Full CCTV investigations.

Pots, Cowlings & Bird Protection fitted. Chimneys Lined.

Solid Fuel Appliances, Rayburns, Woodburners,

Stoves, etc serviced. Fully Insured.

Tel: 01840 261221 Tavistock: 01822 664554

Mob: 07737 533392

www.sweepdevon.com



GRAHAM TOWNSEND GROUNDWORKS

WATER DRAINAGE & GROUNDWORK SPECIALISTS

**WATER LEAKS & RENEWALS
SEPTIC TANKS INSTALLED**

**DRAINS CLEARED
TREATMENT PLANT
ALL FENCING WORK
DEMOLITION**

**GROUNDWORKS
DRAINS REPLACED
MOLING (No Dig)
PATIOS DRIVES**

FREE ESTIMATES

TEL: 01837 657687 / 01566 783788

MOBILE: 07866 465093

email: info@gtownsendgroundworks.com

Roger's

**Painting & Decorating
Services**

**Interior & Exterior Work
Traditional & Modern Techniques
City & Guilds Qualified
30 years Experience**



Mobile: 07783 819171

Septic Tanks

Emptied

Phone: 01805 601203

Mobile: 07831 241531

**Leave a message, we will re-
turn your call, or email:**

hearnhaulageltd@outlook.com

**Small Lorry
Available**

Card payment accepted

Hearn Haulage Ltd

RED SQUIRREL TREECARE

Chillaton - Devon
Tree Removal - Pruning

Hedge Cutting- Seasoned Firewood

Low impact/small scale Forestry

call Matt on 01822860651

e:info@redsquirreltreecare.co.uk



Why Get Wet?



White Umbrellas

For

Your Wedding



To Hire

Tel: 01566 783342

All Proceeds to the Gurkha Welfare Trust

T C M Plumbing



Burst pipes? Tap dripping? Overflow running? Valves Leaking?

Radiators not getting hot? Gutters blocked or leaking?

Based locally at Inwardleigh we cover the surrounding areas

Helping you with your plumbing needs no matter how small

Contact Tim Morgan

Tel: 01837 810599

Mobile: 07838 901803

Or visit our website www.tcmlumbing.org.uk
to see what we can do for you



Blue Lion Inn, Lewdown

Charlie, Nicky, Charlotte, Georgia, Jonty & Alfie
Welcome you to our Family Friendly Pub

01566 783238



*Public House offering good food, real ales,
live music, pool, skittles, darts and BT Sports*

*For upcoming live music & quizzes etc. follow us on Facebook
Search for 'blue lion inn'*



Mobile Foot Care

Sally Isaac S.A.C. Dip. FHPT/FHPP



*Gentle and professional
foot care
in your own home*

If you suffer discomfort from

- corns
- cracked heels
- callus
- ingrown toenails
- thickened/tough nails

*or just have difficulty cutting
your toenails then
please ring me*

I'll come to you!



Telephone Sally
07961 076 168

WELCOME TO
LOBHILL FARMHOUSE
BED AND BREAKFAST
and HOLIDAY COTTAGE



Lobhill Farmhouse, Lewdown
EX20 4DT

Tel: 01566 783542
07817 244687

Jane Colwill

www.lobhillbedandbreakfast.co.uk

PRINTING & COPYING

This service is available for a minimum of 10 copies.
B&W single sided 3p/sheet, double sided 5p/sheet.
Colour single sided 5p/sheet, double sided 11p/sheet

FOR SALE COPIER PAPER £4.75 per ream

The Community NewsLink purchases its paper in bulk and as such is able to access competitively priced materials. We can currently offer our readers copier paper for the special price of £4.75 per ream, a vast saving on High Street prices. We recommend you phone to check availability and arrange a convenient time to collect.

Please Contact: **Terry Southcott, Fairview Bungalow, Lewdown**
Phone 01566 783079 or 07831 309666

All proceeds will go to The Lewdown Residents Association
who produce Community NewsLink.

Milton Abbot Grouped Parish Council

Please see our website for lots of information
about Milton Abbot, Chillaton, Bradstone, Dunterton and the surrounding
areas, along with a list of the local Parish Councillors

www.magpc.co.uk

Stowford
Parish Hall



For bookings and enquiries contact Julie Chick Tel: 01566 783223
Email: stowfordparishhall@gmail.com

A Defibrillator is located in the porch - Postcode EX20 4BZ

Charity No: 1020031



lydvalefellponies@gmail.com

Bratton Clovelly



Apples Juicing

Have you got too many apples?
We can crush them, press, bottle
& sterilise for Juice

Contact - George Bellamy
Woolacott Farm, Lewdown

TOP SOIL

TOP QUALITY TOP SOIL FOR SALE

SEA SAND • ROAD PLANINGS

VARIOUS DECORATIVE GRAVEL CHIPPINGS & BUILDING AGGREGATES

No VAT

01566 784645 OR 07771 823414



Upholstery Service



**A New Life for your
Favourite Furniture**

Collection & Delivery Available



Call: Linda 07484 093494 or **Email:** sales@fabricandfurniture.co.uk

 @fabricandfurniture  fabricandfurniture

www.fabricandfurniture.co.uk

K. Moore & Son. PLANT HIRE

**Specialising in all sitework,
drives, sand schools, septic tanks
hedging and all types of farmwork.**

Royal Oak, Newton Down, Lifton

Tel:- 01566 784722

07785 540494

S H Joinery

Granite and Quartz worktop cutting and fitting

Cut roofs

Traditional A frames

Kitchen fitting

External bi fold doors

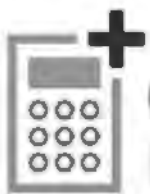
Joinery



Steve Hunt

07974 799062

shjoinery@hotmail.com



Caroline Harris
Bookkeeping Services



Member
in practice

Caroline Harris MIAB

Owner & Bookkeeper

Tel: 01566 783 502

Mob: 07866 953 708

cmhbookkeeping@btinternet.com

www.cmhbookkeeping.co.uk

- + Bookkeeping
- + Self Assessments
- + Accounts Preparation
- + VAT Returns



Ella Payne Gardens
Design & Maintenance
RHS Qualified
07968 170130



**QUALITY OIL FIRED APPLIANCE
 MAINTENANCE AT
 COMPETITIVE PRICES**

CALL MARK
☎ 0781 4976 076 OR 01566 784298

MARKSTONE GRANITE

We don't just sell granite.....

- * **Slate:** Flooring, Worktops, Sills, Hearths, Tables & Benches.
- * **Oak Beams, Sleepers, Barrels & Boards** (perfect for shelves)
- * **Natural Stone Paving & Cobbles.**
 - * **Porcelain Paving & Flooring.**
 - * **Reclaimed Bricks**
- * **Granite Quoins, Cobbles, Lintels, Steps, Plinths, Posts & Troughs**



Tel. 01566 784289 Lifton Devon.
www.markstonegranite.co.uk



TAVISTOCK STOVES

& FIREPLACES

**Woodburning, Multifuel,
 Electric & Gas Stoves.**



In our Showroom:

- **Live working displays**
- **Maintenance products – rope, bricks, glass, cement, paint etc**
- **Fireplace accessories**



Our Services Include:

- **Free site survey.**
- **Full installation service.**
- **Repair & maintenance.**



4 Vigo Bridge Road, Tavistock. PL19 0EY
Tel. 01822 487700 sales@tavistoves.co.uk
www.tavistoves.co.uk



07734 956925

8- Seater Vehicle Available

Anytime - Anyplace - Anywhere

AIRPORT • TRAIN STATION
SHOPPING • DOCTOR

Prompt Reliable Honest
FAMILY RUN COMPANY
24/7 365 days

A.J.NASH BUILDERS LTD

Andy Nash

General Builder & Decorator

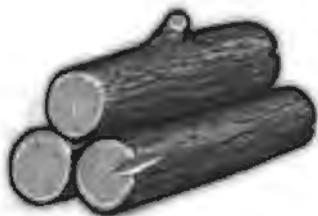


07769728425

01566783274

sarahnash@btinternet.com

LOGS



SEASONED
HARD WOOD,
SPLIT TO YOUR
REQUIREMENTS.

DELIVERED
LOCALLY

07942 073204

the2relics@gmail.com

PLUMBER

EST 40 Years

**Lewdown
& District**

Tel: 01566 783562

Mobile: 07731878510

Lewtrenchard WI January Report

We met on January 9 a cold winters evening at Lewdown Victory Hall. Barbara welcomed a good number of members. We had 2 birthdays, Margaret Dunn and Marion.



The December meeting was a great success, with a novelty version of the twelve days of Christmas, good food and cheer, we also collected an impressive amount of food for the local food banks. Thank you all for making the evening such as success.

We had another WOW event, watching the live streaming from Covent Garden of Cinderella the ballet at the cinema in Okehampton, beautiful performance, highly recommend it.



Barbara presented the flower of the month trophy to equal winners Audrey & Joyce and the competition cup went to Jean. Well done.

We discussed and voted on the resolutions. Please make lots of green hearts for 14/02 so that we can decorate Lewdown & Stowford Hall, this is to Show the Love for the climate coalition. We then settled down for a fun craft making session.

We have a busy 2025 ahead and the committee are looking forward to what it may bring.

**Date and venue for next meeting: Monday February 10 at 7pm,
Lewdown Victory Hall, Mystery Private Chef Demo**

Dates for your diary:

- 20 Feb Thursday Coffee morning - Alder Vineyard
Monday walks are suspended during winter, will resume in Spring
- 8 Mar Saturday 10am - 12pm WI Coffee Morning Shopping Event @ LVH
- 7 Apr 7.30pm Advance notice for the April meeting