

**THE AREA MAGAZINE FOR LEWDOWN, CHILLATON, CORYTON,
STOWFORD, MARYSTOW, THRUSHELTON, LEWTRENCHARD**

December 2024 - January 2025

The magazine for all that's going on in your area

**50p
donation**

Community



Newslink

Published by the Lewdown Residents Association

Registered Charity Number: 1071808

Funded by the Advertisers, Sponsors, Subscribers & Area Churches

Fire/Police/Ambulance Emergency 999

All other contact with Police 101

Police Contact/Crime Prevention PCSO Seonid Greenwood 101

Neighbourhood & Farm Watch

Horse Watch
Gina 01837 840716
Floodline 0345 988 1188

Parish Clerks

Lewdown Grouped
Peter van Delft 01566 783023
lewdownnpc.clerk@gmail.com
www.lewdowngroupedpc.org.uk

Milton Abbot Grouped
Jane Savage
clerk.magpc@outlook.com
www.magpc.co.uk

Stowford
Peter van Delft 01566 783023
stowfordclerk@gmail.com
www.stowfordparishcouncil.org.uk

West Devon MP

Geoffrey Cox 01822 612925

County Councillor

Lois Samuel 01837 851240

Borough Councillors

Milton Ford Ward
Neil Jory 01822 860342

Bridestowe Ward
Terry Southcott 01566 783079
Caroline Mott 01837 861212

Tamarside Ward
Chris Edmonds 01566 784794

Schools

Lewtrenchard 01566 783273
Lifton 01566 784288
Milton Abbott 01822 870273

Colleges

Tavistock 01822 614231
Okehampton 01837 650910
Launceston 01566 772468
01566 773918

Ring & Ride

Okehampton Area 01837 55000
Tavistock Area 01822 618028

Community Groups

Cricket Club 07847111330
Chillaton Football Club 01822 860476
Lamerton Pony Club 01822 860350
Lewdown Past 01566 783396
Lewdown Residents Assoc. 01566 783320
Lewtrenchard WI 01566 783779

Lifton Benefice Churches
Revd Philip Conway 01566 784462
liftonpriest@yahoo.com

Lifton Surgery 01566 784788
01566 784111

Red Spider Company 01409 221376
Recreation Field 01566 783367
Stowford Hall 01566 783223
Victory Hall 01566 783267
Youth Cricket 07847111330
Young Farmers 07443 461344

Advice Helplines

Citizen's Advice Bureau 08444 111444
West Devon Women's Aid 01837 55228
Age Concern 01752 665424
Health Information Line 0800 665544
Homelessness Trust 01822 615259
Parentline 0800 800222
Relate 01392 275681
Samaritans 08457 909090
Tavistock Area Support Svcs. 01822 616958
Age UK 01822 616958
Transport to Health 01822 617525
Victim Support 01822 820455
Youthwise Okehampton 01837 54004

Shop & Post Office

Copper's PO & Stores 01566 783218
Lifton PO & Stores 01566 784211

Front Cover Picture

Description

Exeter Christmas Market

Photo: Hospiscare

NewsLink Archive

www.rawrationsplus.co.uk/lraarchive.html

For us to be able to print and distribute the Community NewsLink it costs approximately £500 a month.

Please make an annual payment of £5+ for yours to:

Account name: **Lewdown Residents Assoc.**
Sort code: **090154**
Account number: **97666081**

Thank you for your support

The Community NewsLink

Produced by Lewdown Residents Association

A monthly magazine providing news, information & items of interest for the areas of Lewdown, Chillaton, Coryton, Stowford, Marystowe, Thrushelton & Lewtrenchard

Established January 1999
Issue No. 285 December 2024 - January 2025

Editor

Simon Hedger

St. Anthony's, Stowford, Lewdown, Okehampton EX20 4BY
Telephone: 01566 783765 Email: newslink@hedger.biz

Production, Distribution and Delivery Helpers:

Tim & Sarah Nash, Simon & Monique Hedger, Andy McCarthy, Ruth Dawe, Audrey Jones, Tom Andrews, Mike Bickell, Rita Squires, Terry Southcott, Bob Holland, Esther Van Delft, Julie Chick, Coppers Stores, Keith Abayomi-Turner

All news, photographs, reports, events, etcetera for NewsLink need to be sent to the Editor by the 15th of the preceding month.

We welcome your articles / items / advertisements. Though we do our best, we cannot guarantee to publish all that is sent to us.

B&W advertising in NewsLink is free for Charity events in our local areas.

Adverts for events outside of the area and for businesses are priced as follows:

	Black & White	Colour
1/4 page	£4/month or £40/year	£6/month or £60/year
1/2 page	£8/month or £80/year	£12/month or £120/year
Whole page	£12/month or £120/year	£16/month or £160/year

Please note that advertising prices are subject to VAT at 20%

Good afternoon dear readers,

Recently we went as a family to Exeter to start Christmas shopping. This is very forward for me, as normally it's a quick dash to the local shell filling station at Sourton (other filling stations are available), a few days before Christmas. I hasten to say this is not my wife's approach, she will pick up bits and pieces throughout the year, when she sees something she thinks is suitable, which in truth is a much more sensible approach, but she's not a man with a man's way of thinking, which is very fortunate for me. Although saying that I usually take some time in selecting the perfect present for my wonderful wife, which is why we have a personal shopper in the house, who is happy to purchase items via the Internet, it seems you can never have enough car shampoo and windscreen cleaning fluids.

We recently went and watched Phantom of the Opera being streamed into Okehampton cinema. It was a truly wonderful evening. When we watched it in the theatre Royal Plymouth, we were right up in the top tier and everything was so distant, and the cast, though excellent, were few in number. In the cinema there was a cast of hundreds, and a large orchestra playing the score. The overall effect was incredible, enough to make the hairs on your neck stand on end. There are more coming over the next few months so expect to see us there if you also go.

Will close now as the cat is lasering me with its eyes and will continue to do so until we get its tea sorted out.

Best wishes to you all from me, and all the others in the Nash household.

PS. Sad news everyone. I recently heard that my law suite against the airplane company we went on holiday with that lost all our luggage has been thrown out.

The judge said there was no case to answer.

A friend of ours recently purchased an Igloo in Lapland, at a very reasonable price. Wonderful location, with beautiful views.

All went well until he had his house warming party.

We recently discovered that our house is haunted by a chicken. It's a poultrygeist.



Draw Results

October

£15 Pat Andrews No. 146

£5 Kim Brook No. 115

£5 Linda Singer No. 57

November

£15 Dave Chick No. 173

£5 Pau Jones No. 110

£5 Oliver Baber No. 25

Christmas
**Carols
Round
the Tree**



Lewdown Victory Hall
December 19th
Starting 7pm ish

Soupa Troopers

All welcome to this community event



Wednesday December 11th

Christmas Special

From 12.30pm in Lewdown Victory Hall

Soup and a Bread Roll, Tea or Coffee - £4

Followed by conversation & games



Reflections of a Steam Fireman

The run up to Christmas on the railways in the early sixties, was manic, there would be van trains arriving at Guildford Yard all day and night, van train would be marshalled into van trains for destination all over the country and they would be dispatched to various hubs and then move on again.



All done on bits of paper and chalk (used to mark the destination on the vans) every loco in the shed that was available was steamed and pressed into service, sixteen hour days were the order of the day, no one complained because the extra money was welcome at Christmas time. Even our depot shunter Little Jim the USA tank 30072 was pressed into service on the mainline running van trains to Woking And back, the fitters would stop their tasks in the depot and would have to deal with faults straight away, such as injectors not

working correctly, usually meant the clack valve on the side of the boiler sticking or brake handle not working properly, most jobs could be sorted with the engine in steam, a lot of cursing and hitting things with a hammer seemed to be the order of the day, one turn I had for a week was getting the engine ready a U, N Q1 or Q and pick the van train up at Guildford up siding and work to Aldershot, a dead start up Pinks hill bank 1 in 60 passed the Cathedral which was being built towards Ash and onwards to Aldershot on arrival at the station the parcels for Aldershot would be unloaded in the station not the goods depot, the porters with the post office personal would unload and load parcels for the rest of the country because Aldershot was a busy station you have about twenty-five minutes and then the van train would go into the up yard to clear for a passenger train and then reverse out to the station when clear.

When all the parcels for Aldershot were unloaded and loaded the van train would carry onto Farnham and unload on the down platform, then into the down yard when a train was expected, then onto Alton

Once the vans were unloaded and loaded run round the train and back tender first to Woking. I remember Guildford No 2 platform was filled up with Christmas parcels to destinations all over the country a 24 hour operation till they were all delivered. If a parcel was going a short distance it would be conveyed in the brake van of the passenger train.



When running back to depot from the London end of Guildford station you would pass through the station into the Chalk tunnel and then reverse back on the running line next to the coal stage over the points and back onto the coal stage road the tender would be coaled by a crane with a ton bucket, if you were on the coal stage you help to fill these up from two coal wagons and normally fill two skips at a time, you climbed the tender and made sure the coal was trimmed before moving the engine down to the shed.

I liked this duty because when the two wagons were empty (32tons) the coal wagons would have to be moved two wagons, putting two loaded wagons in their place a small shunt movement but when you are sixteen and your driver allows you to perform this task with whatever engine is left, couple up to the coal wagon, the grin on my face is hard to disguise.

Next to the coal stage was a siding, and all the Pacific's that were visiting would be stabled here, if for some reason they had to go into the shed it was back along the running line into number 2 road this would involve the signalman to make this movement. The coal stage down to the shed was in charge of the turntable man.

Tom

Punishment Book

Stowford Church of England School 1935 - 1946



This is the third of the serialisation of Stowford's school, it seems to me that the teacher was not having any nonsense in his class, however, for the first nine months of 1937 it was all quiet in the classrooms! P van Delft

Date	Name of Child	Age	Offence	Amount of Punishment
1936 Nov 17th	Reggie Bowyer	9	Shouting in porch	One stroke each hand
1936 Nov 18th	Eric Frise	9	Stamping in place after being told to move	One stroke each hand plus two strokes across legs
1936 Nov 19th	Thomas Earle	12	Talking in drill	Three strokes each hand
1936 Nov 19th	Reggie Bowyer	9	Ditto	One stroke each hand
1936 Dec 8th	William Woodridge	9	Repeated talking	Three strokes each hand
1936 Dec 11th	John Wickett	8	Same offence	Ditto
1937 Sept 17th	John Wickett	9	Paint and ink on new book after warning others removed	One stroke each hand
1937 Oct 5th	Walter Kennedy	11	Repeated inattention to resulting in untidy careless work	Two strokes of cane each hand

The Parish Church of St. Nicholas Broadwoodwidge

You are warmly invited to our annual evening of
CAROLS at UPCOTT BARTON



*An evening of Carols with Mulled wine mince pies and pasties.
Heated indoor barn with Wheelchair access and toilets.*

Friday 13th December at 6pm

Upcott Barton, Broadwoodwidge PL16 0JR



This years poppy appeal was another very successful one. Your generosity is quite remarkable and you have been so supportive of this wonderful charity. Together we raised £1,998.49, for 2025.

Many thanks for your support, from Tim and Nicola Nash,
your honorary organisers 😊

Lewdown

Located in the roadside porch of the Blue Lion, EX20 4DL. Please note it is not recognised by 999 calls if more than 200 metres away from it. When ringing 999 they will access code to open box.

Chillaton

Located in the Village Square on the wall of No. 1 Barn Cottages, PL16 0HS. The 999 operator will be able to give directions for its use.



Lewdown YFC Newsletter



November 2024

New Leaders



Chairperson



Secretary



Treasurer

New officers

At our AGM in September the following officers were elected- Becky Dennis Chairman, Ellen Lawrence Secretary & Charlotte Cleave Treasurer. With plenty of experience and enthusiasm it's safe to say the club is in good hands!

Pumpkin Carving

As Halloween approached we held a pumpkin carving evening. Various designs were crafted & we thank Westcott PYO Pumpkins for the fab pumpkins!



New Members Evening

We kick started the new YFC year with new members evening in September. Bratton school rooms was packed with lots of new and old members alike. Two weeks later we went to Trethorne for our annual bowling evening where lots of members attended. There's still time to sign up if you missed out!



Carnival season!



We've attended Launceston where we won 1st, Okehampton, Hatherleigh and Holsworthy! A great time was had by all.

Upcoming Events/ Meetings

- 10th Dec- Poultry bingo
- 14th Dec- Christmas meal
- 22nd Dec- Tractor Run
- 6th Jan 25- Christmas tree collection



This year we are raising money for Devon Air Ambulance, MIND & Chemotivation.

Book of the Month for December 2024

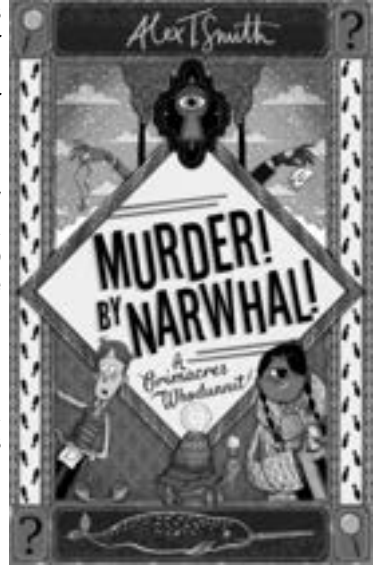
Murder! By Narwhal! by Alex T. Smith

Perfect for fans of Robin Stevens and The Swifts, this deliciously witty and playful middle grade murder mystery from the creator of Claude and Mr Penguin finds resourceful Edna Gristle in pursuit of her tyrannical grandfather's murderer.

When the tyrannical family patriarch Sir Ignatious Gristle is murdered on his 90th birthday at his country estate, every one of his gathered family members is a suspect. Trapped by a snowstorm with no way to contact the police, it's up to his mettlesome granddaughter, Edna, and her trusted tortoise, Charles Darwin, to determine whodunnit!

Full of head-scratching clues, page-turning twists and a lot of people acting suspiciously this is the first in a funny, spoofy middle-grade murder mystery series from bestselling author Alex T. Smith.

Publisher: Hachette Children's Group
ISBN: 9781444981230



Christmas Biscuit Recipe: Makes Perfect Christmas Presents and Tree Decorations

Ingredients: 100g/3½oz unsalted butter, softened at room temperature
100g/3½oz caster sugar 1 free-range egg, lightly beaten
1 tsp vanilla extract 275g/10oz plain flour

To decorate: 400g/14oz icing sugar 3-4 tbsp water
2-3 drops food colourings Edible glitter

Method:

1. Preheat the oven to 190C/375F/Gas 5. Line a baking tray with baking paper.
2. Cream the butter and sugar together in a bowl until pale, light and fluffy.
3. Beat in the egg and vanilla extract, a little at a time, until well combined.
4. Stir in the flour until the mixture comes together as a dough.
5. Roll the dough out on a lightly floured work surface to a thickness of 1cm/½in.
6. Using biscuit cutters or a glass, cut biscuits out of the dough and carefully place onto the baking tray. To make into Christmas tree decorations, carefully make a hole in the top of the biscuit using a straw.
7. Bake the biscuits for 8-10 minutes, or until pale golden-brown. Set aside to harden for 5 minutes, then cool on a wire rack.
8. For the icing, sift the icing sugar into a large mixing bowl and stir in enough water to create a smooth mixture. Stir in the food colouring.
9. Carefully spread the icing onto the biscuits using a knife and sprinkle over the glitter. Set aside until the icing hardens.





When and Where?

Tavistock Memory Café sessions are on the **2nd and 4th Saturday of the month** at 11am and 2pm at The Anchorage Centre, TASS, Chapel St, Tavistock PL19 8AG. Please call us for more information and to book.

Our **Care and Share** sessions are on the **third Thursday of the month**. This monthly session is designed to allow carers and family a short spell of time for themselves, leaving their loved one in the capable hands of our volunteers.

From 1 to 4 hours those living with dementia and attending will be involved in a variety of activities, discuss interests past and present, prepare a cuppa, and enjoy your packed lunch if you wish.

Carers may wish to pop to the shops, meet a friend, or have some quiet time in The Meadows safe in the knowledge that their loved one is in good hands.

For safety and wellbeing reasons, we will discuss with carers and family how suitable it is to leave your loved one unaccompanied and with our volunteers.

For all our support sessions, please book by calling Heather on 07436 008281 or email: info@tavistockmemorycafe.co.uk.

The sessions start with our trained volunteers greeting our members old and new and there's the chance to chat over tea and biscuits.

After the first half an hour, carers can meet in a separate room for a peer support session run by one of the group or an experienced volunteer. The session allows the sharing experiences, exchanging information, or hearing from a guest professional, and always in strict confidence.

Meanwhile those who are living with dementia can get involved in a variety of stimulating and fun activities supported by our volunteers. Quizzes, art and craft, live music and singing, and celebratory events are often in the programme.

During the year we aim to organise some outings that take us to a local location of interest, or a café or pub – tea and cake will be served of course.

Our **Christmas Party** is on Friday 13th December at 2pm - do contact us to book - numbers are limited!

Stowford Parish Council



Abbreviated minutes of Extraordinary meetings held on 15th October 2024
These minutes are provisional until signed by the chair at the next meeting of the parish council.
Meeting No 728

Present: Cllrs Leroy St Louis (Chair), Alexander, and Lorna St Louis, Cllr Edmonds (WDBC), P van Delft (clerk)

1. Apologies - Cllrs Law and Govett
2. Dispensations & declarations of interest - none
3. Members of the public open forum - no-one present
4. Minutes of previous meeting 727 were signed as a true and accurate record of that meeting, Proposed Cllr Lorna St Louis, seconded Cllr Alexander, all in favour
5. Planning application 2882/24/TCA
Council decision - support. Proposed by Cllr Alexander, seconded Cllr Lorna St Louis all in favour.
6. Grant Policy & application form - A motion to support the Grant policy and application form was proposed by Cllr Alexander and seconded by Cllr Lorna St Louis, all were in favour
7. Table Tennis - Council initiative to help with health & fitness. The clerk informed that he had been approached by a parishioner who was willing to give F.O.C. a table in the near future, the council wished to thank the parishioner for their generosity. The clerk confirmed that WDBC have deposited £150 in the bank account, this grant money to go towards the purchase of a table tennis table and equipment, the chair thanked Cllr Edmonds for his support with this project. The chair to obtain costs for table and equipment.
8. Finance - The R.F.O. requested that the council set up a Direct debit mandate in favour of W.D.B.C. for future payments, signed by Cllrs Lorna and Leroy St Louis.

Lewdown Exchange Project

UK Gigabit Voucher Scheme Funded by UK Government

Our community has reached 77% of the required target for Openreach to commit to providing us with **Gigabit** Internet access.

So if another 33 households sign-up we will reach the target.

Go on visit: www.openreach.com/connect-my-community and sign-up,

Stowford's



at Stowford Parish Hall

Thursday 12th December 7.30pm & Thursday 9th January 7.30pm

£4 per person at the door Teams of 2 - 6 people

Bring your own drinks, we provide the nibbles.

(All profits go to charity)



STOWFORD COMMUNITY COFFEE MORNING

Support this new venture and come and meet your neighbours for a coffee, cake and catch up!

When?

10am - 12noon on the first Tuesday of every month.

Where?

Stowford Parish Hall.

Cost?

£3 per person (cash only) which includes a hot drink and cake.

Profits will be donated to a charity chosen by SCCM.

All friends and family welcome.

If you need help with transport, please contact Sarah on 07801 106702 or Tracy on 07973 327161



Forgotten Garden of Lewtrenchard
WINTER SOLSTICE EVENING

Sat. 6.00 - 8.00pm
21st December 2024

**At St Peter's Church with the Friends of the
Forgotten Garden, Lewtrenchard**

***Candle lit* - Hot drinks and mince pies plus carol singing**

All welcome



Lewdown Residents Association

Christmas Bingo with many prizes...

Monday 16th December - Lewdown Victory Hall

Eyes Down 8pm - Lots & Lots of Chocolate - All welcome 😊



The Ark

AT BRIDESTOWE METHODIST CHURCH

Is open for teas and coffee and a chat on
Tuesdays From 10am to 12noon & 2.00pm to 4.00pm
Thursdays From 10.00am to 12noon

Do come and join us, you will be made most welcome.
You will find us on Launceston Road, Bridestowe.

LEWDOWN YFC
CHRISTMAS POULTRY

42 26
BINGO
15 83 +

Tuesday 10th December
LEWDOWN VICTORY HALL

Doors open 7.30pm - Eyes down 8pm
Chickens - Chicken dinner - Cash flyer
Refreshments - Raffle

All ages welcome - Part of the Tarka Christmas Challenges
For more info contact Ellen 07864915451

We're supporting **HOPE** **mind** **HOPE**

LEWDOWN YFC
Charity Christmas Tree Collection
Sunday 5th January 2025

COLLECTING IN
OKEHAMPTON, LAUNCESTON
AND ANYWHERE IN BETWEEN!

£5 per tree minimum donation. All
proceeds will be split between DAA,
MIND & Chemotivation

To book in call/text Ellen 07864915451 or
Becky 07415064989

We're supporting **HOPE** **mind** **HOPE** Devon Air Ambulance

All trees are being donated to a local goat farm

Gardening Jobs For December

Another year seems to have flown by, and 2024 has had more than it's fair share of ups and downs. Given there aren't many jobs to do in December I thought I'd share a few of the key things I've learnt this year and what I'm planning for 2025..

What I've learnt in 2024

On the whole, this year has been fairly successful, and at least where I made mistakes I have been able to learn so that I can (hopefully) avoid the same mistakes next year.

I learnt the hard way not to put 'all your eggs in one basket', having spare plants is really important and throwing away spares too quickly (i.e just after planting) is a risky game. Far better to pot on a few spares into bigger pots just in case new plantings don't make it.



Slugs have been a real pain this year, and the long wet spring didn't help. I did find that keeping the edges around the garden tidy (removing habitat for them to hide) and regularly removing lower/older leaves from plants (removing food which encourages them in) helps.

What I'm planning for 2025

Back in October, I planted 8 cloves of elephant garlic in my polytunnel (along with a couple of different soft neck varieties). I have no idea how they'll go but I'll let you know.. could be another garden fail pending.



I find the huge variety of seeds available to gardeners to be one of the biggest joys of this great past time, and I've already started to get some of my seed packets ready for next spring as and when I find them.

I've got a number of new varieties including chilli 'Habanero Black', pumpkin 'Zombie' and cucumber 'Crystal Apple'. I will still be growing some more familiar varieties such as onion 'Bedfordshire Champion' and lettuce 'Lolla Rossa' which I have found to be both reliable and productive.



Quick fire tips for December

- Keep checking any bulbs or produce which are being stored for signs of rot or disease. Whilst things like garlic and shallots will keep well into next year, one bad bulb can cause ruin to a batch - be vigilant!
- If you haven't had to already, keep an eye on the forecast and watch out for heavy frosts. Tender or prized plants may need to be brought undercover or at the very least fleeced if heavy frosts are forecast..



May the weather be with you, and have a merry Christmas!

Liam



Lewdown YFC Festive Tractor Run



Sunday 22nd December
11.30am for 12pm start
Lewdown Victory Hall

£10 tractor/ £5 passenger to
include food at the end

Booking advisable
07864915451

Devon Air Ambulance

Registered Charity No. 527798



www.daat.org

We're supporting



for better mental health



Lewdown Grouped Parish Council

Coryton, Lewtrenchard, Marystowe and Thrushelton

Abbreviated minutes Minute No 781 28th October 2024
of Ordinary meetings held at Lewdown Victory Hall

These minutes are provisional until they signed by the chair at the next meeting of the parish council

Present: Cllrs Andrews (Chair), Southcott (vice), Alexander, Metherell, Mincher, Perkins, Wilkinson, Yeo, P van Delft (clerk).

1. Apologies for absence - Cllrs McSmythurs, Mott(WDBC)
2. Members of the public open forum - No one present
3. Dispensations & declarations of interest - Cllr Alexander Item 10
4. Minutes of previous meetings 773, 777 and 780 being a true reflection of those meetings were approved and signed by the chair. Minutes 773 & 777 proposed by Cllr Alexander, seconded Cllr Perkins, all in favour. Minute 780 proposed by Cllr Southcott, seconded by Cllr Yeo, all in favour.
5. Finance - Payments were authorised for outstanding invoices that include: Dean Elliot - Grass cutting (August) £60.00
W.D.B.C. - Local election recharge fee £90.35, Royal British Legion - wreath £20.00. Proposed Cllr Southcott, seconded Cllr Perkins, all in favour.
Grant applications - Applications were received from Lewtrenchard, Marystow and Thrushelton PCC's. It was resolved to award £250.00 to each PCC. Proposed Cllr Metherell seconded Cllr Perkins, all were in favour.
6. New defibrillator(s) + location(s). Cllr Yeo suggested that since a defibrillator was now located at Lewtrenchard School was there a need for any more in the village since both ends of the village seemed to be covered. In light of the new defibrillator at the school it was suggested that additional defibrillator(s) could be reviewed again in the future. Cllr Yeo would enquire if the school were doing any defibrillator training. Cllr Mincher suggested that if no training was available could the parish council arrange for a session at the hall. Cllr Southcott informed that he had difficulty with finding information on 'First Responders' but hoped to be able to provide some information for the next meeting.
7. Reports from Cllr Mott (WDBC) were sent via email.
8. Reports from councillors - Cllr Wilkinson reported that a parishioner contacted him regarding a thoughtless car owner parking the car in front of their property entrance when visiting the Lewdown Stores. Cllr Mincher suggested that placing a sign on the gates asking not to park in front of the entrance. Cllr Southcott informed that it is a public highway offence under the road traffic act to park in such circumstances. It was resolved that whilst the problem was not in the parish council's area of responsibility, it suggested that the stores owners could discuss the matter with the car owner.
Cllr Alexander informed that a meeting had been arranged at Marystow Village Hall on 6th November with the main item to discuss the problems associated with parked vehicles obstructing and creating a dangerous hazard on the highway in the vicinity of Chillaton Junction opposite the former Chillaton Arms. The chair proposed to support measures that would resolve the existing problem, seconded by Cllr Metherell, all were in favour.
Cllr Mincher informed that he would like to undergo another 'Energy Efficiency' survey for interested homeowners by using a Thermal imaging camera, details to be provided at the next meeting.
Cllr Southcott informed that Government is consulting on introducing powers for local authority members to apply to the relevant authority for a dispensation to attend formal council meetings remotely and vote by proxy in certain circumstances. It was resolved to discuss the proposal at the next meeting. The link for information is <https://consult.communities.gov.uk/local-government-standards-and-conduct/remote-attendance-and-proxy-voting/consultation/subpage.2024-10-22.4587630148/>
- Cllr Yeo informed that the Baring Gould 'Blue Plaque' unveiling at the Lewtrenchard Manor Hotel Gates held on 16th October was very well attended by people from all over the UK and close by Residents.
Cllr Andrews informed that he had reported several times to the PCSO the complaint of an articulated lorry parking in the vicinity of Reddicliffe. Cllr Andrews has not yet received a response.
9. Councillor vacancies for Coryton and Marystow - No enquiries.
10. Play area - Planning application, lease update, play equipment - held over until next meeting, however Cllr Perkins reported that George Greaves had been replaced by Peter Thomas as the agent act for the Lewtrenchard Baring Gould Trust.
11. Correspondence - Consultation on draft Devon/Torbay local Transport plan.
Free tree offer. It was resolved that a Silver Birch could be requested to replace the dead Cherry tree at Stowford Cross junction, proposed Cllr Alexander, seconded Cllr Mincher, all in favour.

Dartmoor's Stone Circles: Latest Discoveries

An illustrated talk by Alan Endacott

January 2025 (date tbc*)
7.30 pm at Stowford Parish Hall



Scorhill stone circle, Dartmoor

Alan Endacott's name has been in the media recently with his discovery of two new stone circles on Dartmoor. He has agreed to visit us again in January with an update on his findings and theory that the stone circles form a "sacred arc" around the moor. Alan has been exploring the moor since his youth and is currently chair of the Dartmoor Society. Come and join us for an intriguing view into the late Neolithic.

*** Please see Lewdown or Lifton notice boards to find out the meeting's date or phone me to leave your phone number or email address: Hilary 01566 783396**

November 2024 marked the 20th anniversary of the inauguration of Lewdown Past and we feel it is time for a change of Chairman and Secretary, who have both been part of the committee from its early days. We are appealing to local residents generally, as you may have been to some of our meetings in the past or even feel the urge to do something different. Perhaps you would like to help Lewdown Past move forward. We hope the meeting in January will not be our last! Please contact me if you would like to help or have any ideas (Hilary: 01566 783396).

November Quiz Answers

1. October's second full moon, also known as a Blue Moon.
2. Sue
3. Mice
4. Turnip
5. Thriller by Michael Jackson
6. Vlad the Impaler
7. Jamie Lee Curtis
8. To ward off ghosts
9. Harry Houdini
10. All Saints' Day
11. A coven
12. Halloween 2039
13. Emily Blunt and John Krasinski
14. Massachusetts
15. Wooden stakes / silver bullets / sunlight
16. Bells - if they happened to be buried alive
17. Apples

Sudoku

6	3	1	5	4	9	2	7	8
9	4	8	6	7	2	3	1	5
2	7	5	8	3	1	4	9	6
3	8	7	4	1	5	6	2	9
4	9	2	7	6	3	8	5	1
5	1	6	9	2	8	7	4	3
8	2	3	1	5	7	9	6	4
7	5	4	3	9	6	1	8	2
1	6	9	2	8	4	5	3	7



'Tis the Season...

“My children love Christmas and they’re already picking extra treats off the shelf when we go shopping and telling what presents they want. I want to make it special for them, but times are tough and I worry about overspending and getting into debt. What can I do?”

Borrowing money or using a credit card to fund

Christmas can seem like your only option but there are steps to take to keep spending under control and avoid falling into debt.

First - make a budget and stick to it. Who are you buying gifts for? What other seasonal expenses do you have? How much can you realistically afford to spend? Keep receipts or ask for gift receipts in case you have to return something if you overspend. Household bills are likely to be higher too, with colder weather and people spending more time indoors.

If you have built up debt, don't ignore bills or letters. Speak to the organisation you owe money to as they may let you pay smaller amounts. Priority bills need to be paid first such as rent, mortgage, council tax and energy bills. For other types of debt like credit cards or loans, look at what you owe, work out a budget and contact your creditors to set up an affordable repayment plan. This might seem scary but it's an important first step and a great many people are having to do exactly the same thing.

If you are struggling to afford all the essentials like bills and food, we at CA TNMWD can help. A good place to start is by visiting <https://www.citizensadvicetnmwd.org.uk> where there is lots of useful information. You can see our local office hours and availability for appointments/drop-ins. Or call our free, local AdviceLine on 0808 27 87 999. A quick benefits check may show that you can claim additional financial help. You may also qualify for a reduction in council tax or help with energy costs.

From the Mountains of Japan

No.8 - The Underground Music Scene

Most mainstream music in Japan—not unlike most western countries, to be fair—is pretty uninspiring, a mixture of manufactured boy/girl bands, old favourites still plying their trade long after their heyday, and safe pop-rock music made by interchangeable boy/girl-next-door rock bands. Thankfully, in the underground—often quite literally—the music scene is thriving.

As the longtime vocalist/rhythm guitarist of Nagano City's premium foreign rock band, Steampunk Unicorn (find us on YouTube!), I have a little first-hand experience.

Japanese cities are full of “live houses”, small music clubs with a capacity of 50 -100 which are often found in the basements of department stores. In Nagano we have India Live the Sky, Live House J, The Venue, and the don of them all, the mighty Junk Box.

Live houses operate a pay-to-play system. Anyone who wants to perform can simply contact them directly, or get invited to play by another band. The cheapest in Nagano are 15,000yen (75 quid), and for that you get all the drums, amps and mics provided, plus a guy doing sound and lights. All you need to do is bring your guitars. And while it might sound expensive, tickets are 1,500yen, so for every person who shows up and says your band name on the door, your fee drops by 1000yen. More than 15 people, and you get half the cost of subsequent tickets, so you can make money if you have a decent following.



5-6 bands will play per night, 30 minutes each, only the last band getting an encore. Shows close around 9pm. Sometimes you can get a support slot with an up-and-coming band. Our closest shot at fame was once as scheduled support for a well-known female-led speed metal band called D-Drive, only for the gig to be cancelled due to the outbreak of Covid. And our moment passed...!

Over the thirteen years of Steampunk Unicorn, we've played with dozens of bands. All of them were good, some of them so good it made you wonder why they weren't more popular. If you're ever in Japan and want to see what's going on in the music scene, ignore the charts and the supermarket bands, and head for the nearest live house. You won't be disappointed.

Chris Ward



Children's Halloween Pumpkin Competition Winners:
Zak and Bebe - the tub of sweets is on it's way 😊

LAMERTON HUNT PRE - CHRISTMAS BINGO



MONDAY 2ND DECEMBER @ LEWDOWN VICTORY HALL

Dabbers Ready for EYES DOWN @ 7.30pm
(doors open 7pm)

**Fresh Chickens, Christmas Hampers
& Many Great Raffle Prizes**

70's and 80's Evening

Stowford Parish Hall

Saturday 11th January 2025

8pm-11pm Tickets £5

Music, Dancing and Snacks

Bring your own drink

Reserve your tickets from

Julia 07930415128

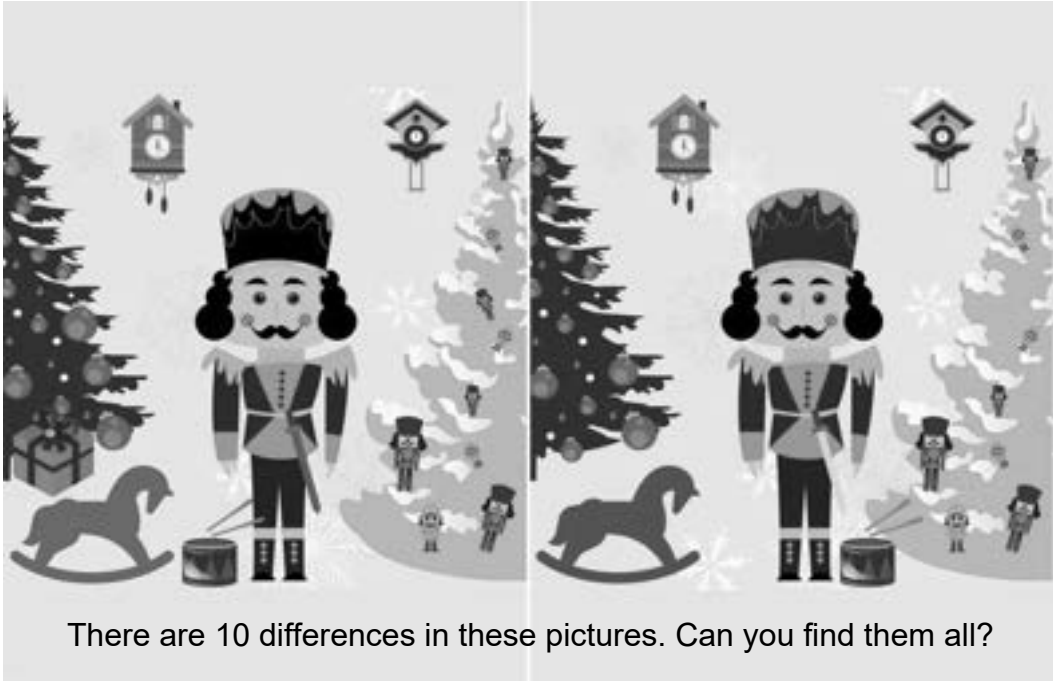
Judy 07835145091

All profits to charity

70's/80's Dress Optional



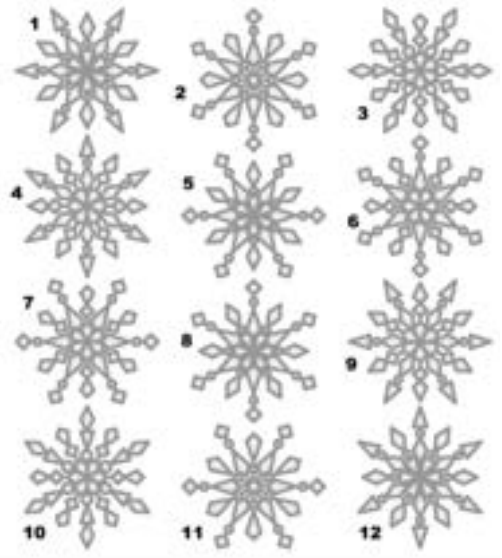
Puzzle Pages



Which shadow matches the snowman?

December's Sudoku

3	5	1	6				8	4
		9	8		1			
	8			4				
	9			1				
							2	
7				2		5		1
				5				2
	7	3			4		9	
1	2					7		5



Match the pairs of identical snowflakes. The angle of rotation does not matter.

Can you figure out what number the lanterns, snowmen and trees represent to solve the final equation?

$3 \text{ lanterns} = 45$
 $2 \text{ snowmen} + 1 \text{ lantern} = 23$
 $2 \text{ trees} + 1 \text{ snowman} = 10$
 $1 \text{ lantern} + 1 \text{ tree} \times 1 \text{ snowman} - 1 \text{ lantern} = ?$

Answers next month...



A BIG THANK YOU to the community who came together to create a wonderful 🌸 curtain for display at Lewdown Victory Hall, St John the Baptist church in Stowford (pictured) and Stowford Parish Hall. Also a big thank you to the children of Lew Trenchard School for their numerous and lovely drawings. Everyone admired the curtain and hard work that had gone into it, what a fitting way to commemorate 80 years since Armistice day.

St. Peter's, Lewtrenchard invite you to
a 'Pie, Pudding and Pint night'
with a quiz thrown in for free



to be held at **Lewdown Cricket Pavilion**

on **Saturday 22nd February at 7.00pm**

The bar will be open for refills
and other drinks

**Tickets £12.50 to include the
Pie, Pudding and Pint**

Teams of 4 for the Quiz

Tickets available from
Lynn Atkinson on 07794548447

**ALL PROCEEDS TO ST. PETER'S
FABRIC FUND**



CHURCH NEWSLETTER

Ministers

United Benefice of Lifton, Broadwood, Stowford,
Lewtrenchard with Thrushelton & Kelly with Bradstone

The Revd. Philip Conway, 01566 784462

liftonpriest@yahoo.com

The Rectory, Parsonage Court, Lifton PL16 0BJ

Milton Abbot Benefice

The Revd. Andy Atkins, 01822 870298

andya4jc@gmail.com

The Vicarage, The Parade, Milton Abbot PL19 0NZ

Churchwardens

Lifton - St Mary's

Mrs E Brown 01566 784386

Sarah Chandler

Broadwood - St Nicholas

Mr D Perkin 01566 776758

Kelly with Bradstone - St Mary's

Mr W Kelly 01822 870393

Marystowe - St Mary the Virgin

Amy Harrowell 01822 860181

Joy McSmythurs 01822 860630

Coryton - St Andrews

Mr G. Vicat 01822 820254

Mrs J Whitfield 07989 666427

Stowford - St John the Baptist

Mr C Chick 01566 783223

Lewtrenchard - St Peters

Mrs A Westlake 01566 783909

Mrs R. Dawe 01566 783127

Thrushelton - St George

Mr A J Nash 01566 783274

Mr T Nash 01566 783320

From the Parish Priest

Dear Friends,

A vicar is always thinking ahead when it comes to Christmas, and although it seems to get earlier every year in our shops and high streets, Christmas starts appearing on my desk in the summer!

Although our shops are now full of cards and decorations, the Church's reaction to the annual remembrance and celebration of Jesus' birth has been on my mind for a very long time already.

We will all be very busy preparing our homes, schools, offices and communities for Christmas with decorations, food and gatherings, but this year, particularly, with the appalling loss of life in the Holy Land and in the surrounding countries, let us all think about what welcoming the Prince of Peace into our homes and hearts actually means.

I invite everyone to come and join us in celebrating and pondering the great mystery of the birth of Jesus Christ, and how we can be messengers of that peace in the communities we live in.

You are all welcome to join us for any and all of our services, in which we will pray for



the peace of the world and the well being of this and every community.

I wish you a very happy, holy and peaceful Christmas.

With love and prayers,

Philip

Service times for December 2024

Any updates will be posted on the Mission Community Website <https://north-tamar-churches.org>

The North Tamar Mission Community



St. Mary the Virgin,
Kelly with Bradstone

St. Mary the Virgin,
Lifton

St. Nicolas,
Broadwoodwidge

St. John the Baptist,
Stowford

St. George,
Thrushelton

St. Peter,
Lewtrenchard

**This is the Schedule for Special Advent, Christmas Services and Events.
Please see the published service rota for regular Services.**

- 1st December Advent Sunday**
First Sunday services as usual
- 8th December Advent 2**
3pm Bradstone Community Carols
- 13th December Carol singing round the Crib**
6pm Upcott Barton 😊
- 16th December Lifton Scout Group Carol Service**
6.30pm St. Mary's Lifton 😊
- 20th December Lifton Community Carol Service**
7pm St. Mary's Lifton 😊
- 24th December Christmas Eve**
4pm Family Crib Service St. Mary's Lifton 😊
6pm Christingle Service St. John the Baptist, Stowford 😊
6pm Nine Lessons & Carols St. Nicholas, Broadwoodwidge
8pm Vigil First Eucharist of Christmas St. Mary's Kelly
11.45pm First Eucharist of Christmas St. Peter's Lewtrenchard
- 25th December Christmas Day**
9.30am Eucharist for Christmas Morning St. George's Thrushelton 😊
11am Family Eucharist for Christmas Morning St. Mary's Lifton 😊

Bridestowe Methodist Church

Preachers for December 2024

1st	Drop in the Ark	10:30 - 12:30
8th	D Sutcliffe	11:00
15th	M Cooke US	09:30
22nd	B W G	11:00
29th	A Bandfield S	11:00

St. Mary the Virgin, Marystowe

Please see the church website www.southtamar.church
for details about services.

Services are also available online from 6pm on Sundays.

Quakers

Meeting for Worship:

Tavistock

Every Sunday 10.00am.

4 Canal Road

Tavistock

Contact: Kay Nicholson

01822 614596

Okehampton

Second Sunday 10.30am.

Fourth Sunday 10.30am

Second Sunday Children's Meeting

Ockment Centre

North Street

Okehampton

Contact: 01837 55805

Roman Catholic Services

Tavistock

Sunday 9.15am

Holy Days 10am

Fr. Greatbatch 01822 612645

(P. Sparling 01822 860355)

Okehampton

Saturday 6pm

Sunday 11am

Chagford - Sunday 9.00am

Fr. A. K. Gundabathina 01837 52229

anil.gundabatina@prcdtr.org.uk

Launceston

Sunday 10.30am

Holy Days 7.30pm

Canon John Deeny 01566 773166

Service times for December cont. & January 2025

29th December Holy Family Sunday
 11am Mission Community Eucharist St. John the Baptist Stowford
 3pm Thrushelton Carol Service St George's Thrushelton

5th January The Feast of the Epiphany
 6pm on the eve Vigil Liturgy at Kelly
 11am Mission Community Eucharist at Lifton
 President and Preacher Archdeacon of Plymouth

12th January The Baptism of Christ
 6pm on the eve Vigil Liturgy at Kelly
 9.30am Parish Eucharist at Broadwoodwidge
 11.15am Parish Eucharist at Lewtrenchard

19th January Second Sunday of Epiphany
 6pm on the eve Vigil Liturgy at Kelly
 10.30am Christian Unity Service at Lifton Methodist Church

26th January Third Sunday of Epiphany
 6pm on the eve Vigil Liturgy at Kelly
 9.30am Parish Eucharist at Thrushelton
 Morning Prayer at Lifton
 Morning Prayer at Broadwoodwidge
 11.15am Parish Eucharist at Lewtrenchard

Wednesday Morning Eucharist: 10.30 at Lifton

There will be some occasions when the Wednesday Morning Service will be a service of Morning Prayer.

Everyone is welcome to everything, no matter which parish you live in. Children are always welcome in church, but the events marked with ☺ are especially appropriate for them.

Bridestowe Methodist Church

Preachers for January 2025

5th	Drop in the Ark	10:30 - 12:30
12th	G Yates	11:00
19th	US at C of E	09:30
26th	V Phillips	11:00



**MOUNT
KELLY**
CHORAL SOCIETY

Concert

Mozart Coronation Mass Handel Messiah highlights

Saturday 14 December 2024 at 19:30

Methodist Church, Chapel Street, Tavistock, PL19 8DX

Divertimento Ensemble, Soprano: Bianca Phillips,
Alto: India Lord, Tenor: Harry Tabb, Bass: Marcus Coleridge
Director: Dan Robson



Tickets £15 on the door, £14 in advance from Book Stop or
www.ticketsource.co.uk/mount-kelly-choral-society

Free for U18s

Monday to Friday

8.45am to 3.15pm

2-5 year olds

Led by Lisa Broadbridge

Early Years Teacher

Please phone for availability
Early Years Foundation Unit with plenty
of safe outdoor space.

We accept Zgether funding for 2 year
olds and Early Years Education Funding
for 3 year olds.

Respect

Kindness

Responsibility

FLS

Friends of Low Trenchard C of E Primary School

We have an amazing team that
fundraise to enhance our children's
learning journey. Please see our FLS
Facebook page, school website and
local adverts to support our fantastic
school.

Bingo ~ Bake sale ~ summer/winter fair ~ raffles ~
jumble sale ~ sponsored activities and much more!

Wrap around care

Available for 3-11 year olds

£2 per hour (1/2 hour bookings available)

8am to 8.40 am breakfast club £2 per session

3.15pm to 5.15pm (4.15pm Fridays) after school care including snacks.

For more information, contact the school office on
01566 783273

www.lewtrenchard.devon.sch.uk

Email lewtrenchard@andaras.org



TORQUAY TAXIS Ltd

AIR AND SEA PORT
TRANSFERS

luxury comfortable transport

Door to door service

All air and sea ports covered

Reliable service

Competitive prices

18 years established

Call Jared Spencer
07830360341
01566 451442

**ROGER
WONNACOTT**
GROUND & GARDEN MAINTENANCE

- ▲ GENERAL GARDEN MAINTENANCE
- ▲ SERVICES RENEWED & REPLACED
- ▲ LEAK REPAIRS & TROUBLESHOOTING
- ▲ MOLE / GRINDOMAT WORK UNDERTAKEN
- ▲ MOLE & COMPRESSOR AVAILABLE



- ▲ COMPLETE JOB PRICING OR HOURLY RATES
- ▲ FULLY INSURED & BASED NEAR LAUNCESTON

07919 912776

▼ rwonnacott@hotmail.com



supplier of
HARDWOOD LOGS
cut and split to your
requirements
Tel. Colin Bennett:
01822 487259
Mobile:
07523172369

Lewdown Victory Hall

Bookings contact
Roy Stacey
on 01566 783267



Broadbury Landcare

All aspects of Garden Maintenance
and Landscaping
Fully Qualified Fully Insured Free Estimates
18 Years Experience
Andrew Barton 07532 216216

Raw Meat Animal Feed For Dogs & Cats

Convenient blocks *Frozen to preserve*

Natural, just meat or meat and bone

No Preservatives, No Artificial Colouring's

(both can be harmful to your animal)

Raw Rations Plus



For information or to order

website: www.rawrationsplus.co.uk

Phone: **07831309666** or **01566783079**

Email: sales@rawrationsplus.co.uk

Post: Fairview Bungalow, Lewdown,
Okehampton, Devon EX20 4DL



A C WORTH BUILDERS



GENERAL BUILDERS, DECORATORS,
PLUMBING & HEATING,
PURPOSE MADE JOINERY etc.

Kirtonia, Vale Down, Lydford DEVON EX20 4BB

Email: acworthbuilders@aol.com

Tel: 01566 783282

Keith: 07778 471648

Andy: 07867 524515



TINHAY

BUILDING SUPPLIES LTD

Supplying quality building materials to the trade and DIY

We're bigger than you think

Lifton

Tinhay Mill Industrial Estate, Tinhay, Lifton, Devon PL16 0AH

Telephone: 01566 784385

Email: lifton@tinhaybuildingsupplies.co.uk

Launceston

Newport Industrial Estate, Launceston, Cornwall PL15 8EX

Telephone: 01566 771989

Email: launceston@tinhaybuildingsupplies.co.uk

Tavistock

Pixan Lane, Tavistock, Devon PL19 8DH

Telephone: 01822 619509

Email: tavistock@tinhaybuildingsupplies.co.uk

FREE LOCAL DELIVERY   www.tinhaybuildingsupplies.co.uk

CBL STOVES

The Showroom, Unit 5
Red Post, Bude, Cornwall
EX23 9NW

01288 381852

carl@cblstoves.co.uk

www.cblstoves.co.uk



- Stainless Steel twinwall flues
- Chimney Lining
- Iskoern Pumice lining
- Fireplace alterations
- Stove Installations
- Wood, Multifuel, Gas & Electric Traditional & Contemporary Stoves & Fires
- Chimney Rebuilds
- Slate, Granite & Glass Hearths
- Wood & Ceramic beams & surrounds
- Floating Shelves



Tim Dixon

**Domestic Plumbing &
Bathroom Fitting**

**01566 784028
07903535881**

**careful & reliable service
timdixonplumbing.co.uk**

Megan's Home Cleaning!

**10+ years in the
Business**

**Earth Friendly
Cleaning solutions
Weekly & bi-weekly
Slots available**

Tel: 07955 805 271

MARK CHIVERS - SOLE TRADER

Highly skilled carpenter with over 40 years
experience, including but not limited to:

INTERIOR

**KITCHEN • BATHROOMS • BEDROOMS
FLOORING • DOORS • WALLS**

EXTERIOR

**FASCIA & SOFFIT • GUTTERING & DOWNPIPE
WINDOWS (including sash repairs) • FENCING**

FREE ESTIMATES - UNDER NO OBLIGATION

The best price and best service for your budget
Please Do Not Hesitate To Contact Me With Any Enquiries:



CARPENTRY & JOINERY

**Mobile: 07804 104812
(8am-7pm)**

**Home: 01566 783743
(9am-5pm)**

**Email any time:
m.c.carpentry@outlook.com**



☎ 07836 760060

✉ BrowningsCarpentry@gmail.com

All Aspects of Bespoke
Carpentry & Joinery

📘 Browning's Carpentry & Joinery

Chair Yoga for Seniors

with Yogajeanie

Chair yoga helps with
Muscle toning
Reduced stress levels
better breathing habits
better sleep
overall sense of well-being
It's fun too!

Interested?
Just come along in comfy clothing

At Lewdown Village Hall
Thursday's
from 10:00 am -11:00 am
£7 per class

For more information contact
jeanharris50@hotmail.com
Mobile 07929 278788



R Mears & Sons

Chimney Sweeps & Stove Installation

Established over 30 years

Vac Brush. Full CCTV investigations.

Pots, Cowlings & Bird Protection fitted. Chimneys Lined.

Solid Fuel Appliances, Rayburns, Woodburners,

Stoves, etc serviced. Fully Insured.

Tel: 01840 261221 Tavistock: 01822 664554

Mob: 07737 533392

www.sweepdevon.com



GRAHAM TOWNSEND GROUNDWORKS

WATER DRAINAGE & GROUNDWORK SPECIALISTS

**WATER LEAKS & RENEWALS
SEPTIC TANKS INSTALLED**

**DRAINS CLEARED
TREATMENT PLANT
ALL FENCING WORK
DEMOLITION**

**GROUNDWORKS
DRAINS REPLACED
MOLING (No Dig)
PATIOS DRIVES**

FREE ESTIMATES

TEL: 01837 657687 / 01566 783788

MOBILE: 07866 465093

email: info@gtownsendgroundworks.com

Roger's

**Painting & Decorating
Services**

**Interior & Exterior Work
Traditional & Modern Techniques
City & Guilds Qualified
30 years Experience**



Mobile: 07783 819171

Septic Tanks

Emptied

Phone: 01805 601203

Mobile: 07831 241531

**Leave a message, we will re-
turn your call, or email:**

hearnhaulageltd@outlook.com

**Small Lorry
Available**

Card payment accepted

Hearn Haulage Ltd

RED SQUIRREL TREECARE

Chillaton - Devon
Tree Removal - Pruning
Hedge Cutting- Seasoned Firewood
Low impact/small scale Forestry

call Matt on 01822860651

e:info@redsquirreltreecare.co.uk



Why Get Wet ?

White Umbrellas



For

Your Wedding



To Hire

Tel: 01566 783342

All Proceeds to the Gurkha Welfare Trust

T C M Plumbing



Burst pipes? Tap dripping? Overflow running? Valves Leaking?
Radiators not getting hot? Gutters blocked or leaking?
Based locally at Inwardleigh we cover the surrounding areas
Helping you with your plumbing needs no matter how small

Contact Tim Morgan

Tel: 01837 810599 Mobile: 07838 901803

Or visit our website www.templumbing.org.uk
to see what we can do for you

BLUE LION
INN



Blue Lion Inn, Lewdown

Charlie, Nicky, Charlotte, Georgia, Jonty & Alfie
Welcome you to our Family Friendly Pub

01566 783238

BLUE LION
INN



*Public House offering good food, real ales,
live music, pool, skittles, darts and BT Sports*

*For upcoming live music & quizzes etc. follow us on Facebook
Search for 'blue lion inn'*



Mobile Foot Care

Sally Isaac S.A.C. Dip. FHPT/FHPP



*Gentle and professional
foot care
in your own home*

If you suffer discomfort from

- corns
- cracked heels
- callus
- ingrown toenails
- thickened/tough nails

*or just have difficulty cutting
your toenails then
please ring me*

I'll come to you!

Telephone Sally
07961 076 168

WELCOME TO
LOBHILL FARMHOUSE
BED AND BREAKFAST
and HOLIDAY COTTAGE



Lobhill Farmhouse, Lewdown
EX20 4DT

Tel: 01566 783542
07817 244687

Jane Colwill

www.lobhillbedandbreakfast.co.uk

COLOUR PRINTING & COPYING

This service is available for a minimum of 10 copies at a charge of 5p per single copy or 7p per double sided copy.

FOR SALE COPIER PAPER

£4.75 per ream

The Community NewsLink purchases its paper in bulk and as such is able to access competitively priced materials. We can currently offer our readers copier paper for the special price of £4.75 per ream, a vast saving on High Street prices. We recommend you phone to check availability and arrange a convenient time to collect.

Please Contact: **Terry Southcott, Fairview Bungalow, Lewdown**
Phone 01566 783079. or M 07831309666

All proceeds will go to The Lewdown Residents Association
who produce The Community NewsLink.

Milton Abbot Grouped Parish Council

Please see our website for lots of information
about Milton Abbot, Chillaton, Bradstone, Dunterton and the surrounding
areas, along with a list of the local Parish Councillors

www.magpc.co.uk



For bookings and enquiries contact Julie Chick Tel: 01566 783223

Email: stowfordparishhall@gmail.com

A Defibrillator is located in the porch - Postcode EX20 4BZ

Charity No: 1020031



Upholstery Service





A New Life for your
Favourite Furniture

Collection & Delivery Available



Call: Linda 07484 093494 or **Email:** sales@fabricandfurniture.co.uk

 @fabricandfurniture  fabricandfurniture

www.fabricandfurniture.co.uk

K. Moore & Son. PLANT HIRE

Specialising in all sitework,
drives, sand schools, septic tanks
hedging and all types of farmwork.

Royal Oak, Newton Down, Lifton

Tel:- 01566 784722

07785 540494

S H Joinery

Granite and Quartz worktop cutting and fitting

Cut roofs

Traditional A frames

Kitchen fitting

External bi fold doors

Joinery



Steve Hunt

01566 783228

07974 799062

shjoinery@hotmail.com



Caroline Harris
Bookkeeping Services



Member
in practice

Caroline Harris MIAB

Owner & Bookkeeper

Tel: 01566 783 502

Mob: 07866 953 708

cmhbookkeeping@btinternet.com

www.cmhbookkeeping.co.uk

- + Bookkeeping
- + Self Assessments
- + Accounts Preparation
- + VAT Returns



Ella Payne Gardens
Design & Maintenance

RHS Qualified

07968 170130

BROADWOOD BOILER SERVICES



QUALITY OIL FIRED APPLIANCE
MAINTENANCE AT
COMPETITIVE PRICES

CALL MARK

☎ 0781 4976 076 OR 01566 784298

MARKSTONE GRANITE

We don't just sell granite.....

- * Slate: Flooring, Worktops, Sills, Hearths, Tables & Benches.
- * Oak Beams, Sleepers, Barrels & Boards (perfect for shelves)
- * Natural Stone Paving & Cobbles.
 - * Porcelain Paving & Flooring.
 - * Reclaimed Bricks
- * Granite Quoins, Cobbles, Lintels, Steps, Plinths, Posts & Troughs



Tel. 01566 784289 Lifton Devon.
www.markstonegranite.co.uk



TAVISTOCK STOVES

& FIREPLACES

Woodburning, Multifuel,
Electric & Gas Stoves.



In our Showroom:

- Live working displays
- Maintenance products – rope, bricks, glass, cement, paint etc
- Fireplace accessories



Our Services Include:

- Free site survey.
- Full installation service.
- Repair & maintenance.



4 Vigo Bridge Road, Tavistock. PL19 0EY

Tel. 01822 487700 sales@tavistoves.co.uk

www.tavistoves.co.uk



07734 956925
8- Seater Vehicle Available

Anytime - Anyplace - Anywhere

AIRPORT • TRAIN STATION
SHOPPING • DOCTOR

Prompt Reliable Honest
FAMILY RUN COMPANY
24/7 365 days

A.J.NASH BUILDERS LTD

Andy Nash

General Builder & Decorator



07769728425

01566783274

sarahnash@btinternet.com

LOGS



SEASONED
HARD WOOD,
SPLIT TO YOUR
REQUIREMENTS.

DELIVERED
LOCALLY

07942 073204

the2relics@gmail.com

PLUMBER

EST 40 Years

Lewdown
& District

Tel: 01566 783562

Mobile: 07731878510

Lewtrenchard WI November Report

We met on November 11 at Lewdown Victory Hall.

Barbara welcomed many members, their husbands, visitors from Lifton WI and of course Rupert Kirkwood - the Lone Kayaker. Jerusalem was sung. We were very sad to hear of the passing of Graham Bevan and our thoughts go to Josie and the family. **Then we handed over to Rupert - The Lone Kayaker:** Rupert's talk was named 'Wildlife Safari around Cornwall and Devon' and boy, did it deliver. Rupert was no stranger to many of our members and visitors, most of them knew him as their

theWI
INSPIRING WOMEN



vet. After 33 years, he took early retirement due to an injury and decided to pursue his hobby: Wildlife. It all started as a child, watching a snail. He explores rivers, estuaries, the coast, caves & canals all over the South West of England. Based in Holsworthy, he has easy access to many of them. Since he set off in his kayak just over 10 years ago, he clocked up 1,156.27 miles! Rupert has seen water & land creatures he never dreamt of seeing in our waters. From Ospreys, beavers, otters, swimming

squirrels & badgers, seals, giant 7 feet blue tunas, sun fish, puffins, leatherback turtles, humpback and minke whales, basking shark and of course dolphins, he has encountered them all, close up, captured on film and most only 3-5 miles off our Devon & Cornwall shores. Amazing. Nothing phases him; surprisingly, he has not been sunk by any of those discoveries. He uses a very simple camera, packed in a plastic bag and just points. We all enjoyed his relaxed presentation, the stunning photography, fantastic videos; we were literally riding on his kayak! Asked if he ever felt afraid, it was a definite NO! Not only did Rupert discover a humpback whale in our waters, but he got to name it too because he was the first to spot it, of course, having been spotted off the Cornish Coast, he named it 'Cream Tea'. Lundy Island is a great place to spot Puffins, their population increased due to the eradication of rats on the island. Mousehole is an excellent place to spot dolphins. Want to know more, read Rupert's blog: thelonekayaker.wordpress.com.

**Date and venue for next meeting: Monday December 9 at 7pm,
Lewdown Victory Hall, Christmas Party!**

Dates for your diary:

- 19 Dec Thursday Coffee morning - Alder Vineyard
 - 13 Jan Monthly meeting @ 7pm Lewdown Victory Hall
 - 16 Jan Thursday Coffee morning - Alder Vineyard
 - 19 Jan Christmas Lunch with partners/friends
- Monday walks are suspended during winter, will resume in Spring