

THE AREA MAGAZINE FOR LEWDOWN, CHILLATON, CORYTON,  
STOWFORD, MARYSTOW, THRUSHELTON, LEWTRENCHARD

August 2024

The magazine for all that's going on in your area

50p  
donation

*Community*



*Newslink*

Published by the Lewdown Residents Association

Registered Charity Number: 1071808

Funded by the Advertisers, Sponsors, Subscribers & Area Churches

## Fire/Police/Ambulance Emergency 999

All other contact with Police 101

### Police Contact/Crime Prevention PCSO Seonid Greenwood 101

### Neighbourhood & Farm Watch

Horse Watch  
Gina 01837 840716  
Floodline 0345 988 1188

### Parish Clerks

Lewdown Grouped  
Peter van Delft 01566 783023  
[lewdownnpc.clerk@gmail.com](mailto:lewdownnpc.clerk@gmail.com)  
[www.lewdowngroupedpc.org.uk](http://www.lewdowngroupedpc.org.uk)  
Milton Abbot Grouped  
Jane Savage  
[clerk.magpc@outlook.com](mailto:clerk.magpc@outlook.com)  
[www.magpc.co.uk](http://www.magpc.co.uk)

Stowford  
Peter van Delft 01566 783023  
[stowfordclerk@gmail.com](mailto:stowfordclerk@gmail.com)  
[www.stowfordparishcouncil.org.uk](http://www.stowfordparishcouncil.org.uk)

### West Devon MP

Geoffrey Cox 01822 612925

### County Councillor

Lois Samuel 01837 851240

### Borough Councillors

Milton Ford Ward  
Neil Jory 01822 860342  
Bridestowe Ward  
Terry Southcott 01566 783079  
Caroline Mott 01837 861212  
Tamarside Ward  
Chris Edmonds 01566 784794

### Schools

Lewtrenchard 01566 783273  
Lifton 01566 784288  
Milton Abbott 01822 870273

### Colleges

Tavistock 01822 614231  
Okehampton 01837 650910  
Launceston 01566 772468  
01566 773918

### Ring & Ride

Okehampton Area 01837 55000  
Tavistock Area 01822 618028

### Community Groups

Cricket Club 07847111330  
Chillaton Football Club 01822 860476  
Lamerton Pony Club 01822 860350  
Lewdown Past 01566 783396  
Lewdown Residents Assoc. 01566 783320  
Lewtrenchard WI 01566 783779  
Lifton Benefice Churches  
Revd Philip Conway 01566 784462  
[liftonpriest@yahoo.com](mailto:liftonpriest@yahoo.com)  
Lifton Surgery 01566 784788  
01566 784111  
Red Spider Company 01409 221376  
Recreation Field 01566 783367  
Stowford Hall 01566 783223  
Victory Hall 01566 783267  
Youth Cricket 07847111330  
Young Farmers 07443 461344

### Advice Helplines

Citizen's Advice Bureau 08444 111444  
West Devon Women's Aid 01837 55228  
Age Concern 01752 665424  
Health Information Line 0800 665544  
Homelessness Trust 01822 615259  
Parentline 0800 800222  
Relate 01392 275681  
Samaritans 08457 909090  
Tavistock Area Support Svcs. 01822 616958  
Age UK 01822 616958  
Transport to Health 01822 617525  
Victim Support 01822 820455  
Youthwise Okehampton 01837 54004

### Shop & Post Office

Copper's PO & Stores 01566 783218  
Lifton PO & Stores 01566 784211

### Front Cover Picture

***The Non-Native Pheasant***  
*See page 24*

*Photo: Ed.*

### NewsLink Archive

[www.rawrationsplus.co.uk/lraarchive.html](http://www.rawrationsplus.co.uk/lraarchive.html)

For us to be able to print and distribute the Community NewsLink it costs approximately £500 a month.

**Please make an annual payment of £5+ for yours to:**

Account name: **Lewdown Residents Assoc.**  
Sort code: **090154**  
Account number: **97666081**

**Thank you for your support**

# *The Community NewsLink*

**Produced by Lewdown Residents Association**

**A monthly magazine providing news, information & items of interest for the areas of Lewdown, Chillaton, Coryton, Stowford, Marystowe, Thrushelton & Lewtrenchard**

Established January 1999  
Issue No. 281 August 2024

**Editor**

**Simon Hedger**

**St. Anthony's, Stowford, Lewdown, Okehampton EX20 4BY**

**Telephone: 01566 783765 Email: [newslink@hedger.biz](mailto:newslink@hedger.biz)**

**Production, Distribution and Delivery Helpers:**

Tim & Sarah Nash, Andy McCarthy, Ruth Dawe, Audrey Jones, Tom Andrews, Mike Bickell, Rita Squires, Terry Southcott, Simon & Monique Hedger, Bob Holland Julie Chick, Coppers Stores, Keith Abayomi-Turner and Kathy Lawrence

**All news, photographs, reports, events, etcetera for NewsLink need to be sent to the Editor by the 15th of the preceding month.**

We welcome your articles / items / advertisements. Though we do our best, we cannot guarantee to publish all that is sent to us.

B&W advertising in NewsLink is free for Charity events in our local areas.

**Adverts for events outside of the area and for businesses are priced as follows:**

	<b>Black &amp; White</b>	<b>Colour</b>
<b>1/4 page</b>	£4/month or £40/year	£6/month or £60/year
<b>1/2 page</b>	£8/month or £80/year	£12/month or £120/year
<b>Whole page</b>	£12/month or £120/year	£16/month or £160/year

**Please note that advertising prices are subject to VAT at 20%**

***Dear Readers. It was recently pointed out to me, by my sister in law in fact, how unobservant I am...***

On the front cover of last month's edition there was a lovely photo of Thrushelton church and the lime trees. I just happened to say that it must be an old picture as one of the trees is no longer there. Sarah said I should have another closer look. After a few seconds of looking it became obvious that there was a man in the trees, in a cherry picker cage. So now not only my wife thinks I'm blind, but so do many others in the family.

Good news everyone. At long last we have arranged a date for the LRA's AGM, which is mostly about the NewsLink magazine. It will be on September the 2nd starting at 7.30pm, at Lewdown Victory hall. So come and have your say.

Just a quick reminder, that the local Produce Show is getting ever near, is your sunflowers tall, or your potatoes round, or your jar of jam perfect, if so have a go, you might surprise yourself. There are schedules in the shop, or at the Victory Hall.

Will close now as tea is nearly ready, and tomorrow evening is the final at the Euros, come on England, so got to get it done tonight.

Best wishes to you all from Tim Nash Still the chairperson, unless you are pig sick of the jokes, so now you have a golden opportunity to get rid of me, at the AGM.

*All the jokes underneath are thanks to my daughters, and family's, Father's Day card.*

*Ps. I have recently started a very lucrative business selling a homing pigeon.*

*So far I sold it over ten times.*

*What did the drummer call his twin daughters?.*

*Anna one, Anna two.*

*What do you call the boss at old McDonald's farm The C-I-E-I-O.*

*My children told me to stop acting like a flamingo.*

*So I had to put my foot down.*

**You will find a complete list of Produce Show *Classes* inside this months NewsLink. There is something for everyone to have a go at.**

**Go on have a go... come along and support the show 😊**

"One of my best holidays in Tunisia"! From Ashley Colon, age 6



# Soupa Troopers

All welcome to this community event



Wednesday August 14th

From 12.30pm in Lewdown Victory Hall

Soup and a Bread Roll, Tea or Coffee - £4

Followed by conversation & games



# Lewdown Residents Association

## AGM

September 2 from 7.30pm  
Lewdown Victory Hall

All welcome  
Come, have your say on NewsLink, etc.

### July NewsLink Quiz Answers

#### UNDER 8 COLOURING COMPETITION:

Draw a picture of your best holiday

**WINNER:** Ashley Colon - great picture Ashley (see page 5)

**ODD WORD OUT: LINEN** Every second letter forms a progressive Roman numeral

#### JULY SUDUKO SOLVED:

3	2	8	6	9	4	7	1	5
5	6	9	7	2	1	4	3	8
7	1	4	8	5	3	9	6	2
2	7	6	9	4	8	1	5	3
1	9	5	2	3	6	8	7	4
4	8	3	5	1	7	6	2	9
9	3	1	4	7	2	5	8	6
6	5	7	3	8	9	2	4	1
8	4	2	1	6	5	3	9	7

#### FIND THE MISSING NUMBER:

Start at 1 skip 3, add 7, skip 3, add 6, skip 3, add 5, etc. The answer is eventually 1. You should have been able to solve this puzzle in 30 seconds!

#### FIND THE VALUE OF X IN THE ALGEBRA EQUATION:

$X=3$



It's been a busy few weeks with lots of cricket going on both at home and away. You can find all the results and fixtures at: [www.lewdown.play-cricket.com](http://www.lewdown.play-cricket.com).

The junior season is coming to an end for the school holidays and now the focus will be on U17's, U19's and both Saturday adult teams. You are always welcome to join us for the games. Usually the bar is open and there is no charge to watch. Please support us if you can.

**Notable performances: 16 year old Matthew Maynard contributed with bat & ball in the 1st XI win over Paignton third. With figures of 77 not out and 4 wickets for 32 runs this was certainly a match winning performance. At the other end of the age spectrum 2nd XI Vice-captain Johnny Knight scored exactly 100 to secure the win against Yelverton Bohemians.**

#### **UPCOMING HOME GAMES:**

Sun 28th July:

U17's home Cornwood (10.00)

Sat 3rd August:

2nd XI home to Chagford 2nd (13.00)

Sun 4th August:

U17's home to Ivybridge (10.00)

Sat 10th August:

1st XI home to Whitchurch Wayfarers (13.00)

Sat 17th August:

2nd XI home Plymstock 3rd (13.00)

Sat 31st August:

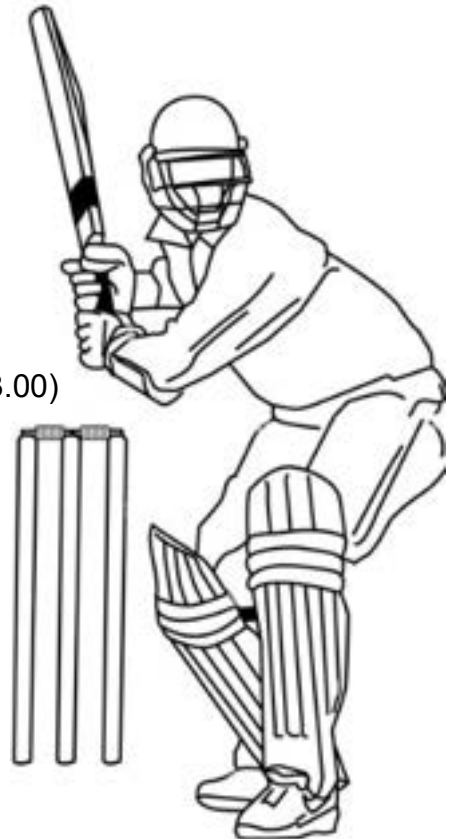
1st XI home to Plympton 2nd (13.00)

#### **Club Contact:**

Geraint Williams 07850 786310

#### **Junior Cricket Coordinator:**

Mike Maynard 07974 756136

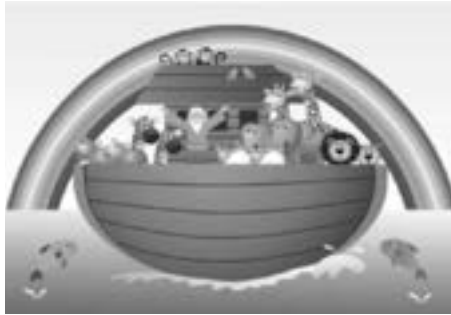


## 306 Go Bus Launceston to Okehampton, via Lifton

	Service306	Service306	Service306	Service306	Service306
Okehampton West Street	-	07:35	-	-	-
New Road Cross	-	07:36	-	-	-
Betty Cottles	-	07:37	-	-	-
Hughslade	-	07:38	-	-	-
Pool Cross	-	07:42	-	-	-
Launceston Westgate Street	06:28	-	09:28	13:28	17:28
Launceston, Jet Garage	06:28	-	09:28	13:28	17:28
Launceston, Woburn Road Jcn	06:29	-	09:29	13:29	17:29
Pennygillam	06:29	-	09:29	13:29	17:29
Landlake Road	06:31	-	09:31	13:31	17:31
Launceston Hospital	06:31	-	09:31	13:31	17:31
Hurdon Road	06:31	-	09:31	13:31	17:31
Prouts Court Flats	06:33	-	09:33	13:33	17:33
Kensley Valley Meadow	06:34	-	09:34	13:34	17:34
Launceston Rugby Ground	06:37	-	09:37	13:37	17:37
Liftondown Cross	06:40	-	09:40	13:40	17:40
Lifton Lifton Hall Hotel	06:43	-	09:43	13:43	17:43
Fox and Grapes	06:44	-	09:44	13:44	17:44
Spytown Cross	06:46	-	09:46	13:46	17:46
Harris Arms	06:47	-	09:47	13:47	17:47
Royal Exchange Inn	06:49	-	09:49	13:49	17:49
Lewdown Post Office	06:51	-	09:51	13:51	17:51
Blue Lion	06:51	-	09:51	13:51	17:51
Primary School	06:51	-	09:51	13:51	17:51
Bridge	06:54	-	09:54	13:54	17:54
Bridestowe turn	06:58	07:43	09:58	13:58	17:58
Bridge	-	07:51	-	-	-
Primary School	-	07:58	-	-	-
Blue Lion	-	08:00	-	-	-
Lewdown Memorial	-	08:01	-	-	-
Royal Exchange Inn	-	08:02	-	-	-
Harris Arms	-	08:04	-	-	-
Spytown Cross	-	08:05	-	-	-
Fox and Grapes	-	08:07	-	-	-
Lifton Arundel Arms	-	08:08	-	-	-
Liftondown Cross	-	08:10	-	-	-
Launceston Rugby Ground	-	08:12	-	-	-
Kensley Valley Meadow	-	08:14	-	-	-
Hurdon Road	-	08:16	-	-	-
Launceston Hospital	-	08:17	-	-	-
Pennygillam	-	08:18	-	-	-
Launceston, St Johns Road	-	08:18	-	-	-
Launceston, Jet Garage	-	08:19	-	-	-
Launceston Westgate Street	-	08:20	-	-	-
Pool Cross	06:58	-	09:58	13:58	17:58
Little Chef	07:02	-	10:02	14:02	18:02
Hughslade	07:04	-	10:04	14:04	18:04
Betty Cottles	07:05	-	10:05	14:05	18:05
New Road Cross	07:07	-	10:07	14:07	18:07
Okehampton West Street	07:10	-	10:10	14:10	18:10
Tenby House	07:11	-	10:11	14:11	18:11
Okehampton Railway Station	07:17	-	10:17	14:17	18:17



# The Ark



## AT BRIDESTOWE METHODIST CHURCH

Is open for teas and coffee and a chat on  
Tuesdays From 10am to 12 noon And 2.00pm to 4.00pm

Thursdays From 10.00am to 12 noon

Do come and join us, you will be made most welcome.

You will find us on **Launceston** Road, Bridestowe.



**St Lukes (Plymouth) will have an Open Gardens involving the  
Forgotten Gardens of Lewtrenchard**

12.00 - 4.00pm - Sunday 11 August.

Teas will be available during the afternoon.

For more details and updates see our website:

<https://www.forgottengarden.co.uk/category/news/>



# Macmillan Cream Tea

Monday 26<sup>th</sup> August

2.30pm-4.30pm



£2.50 per person

**Sarah Nash**  
**Anvil Cottage**  
**Lewdown**

01566 783274

# Stowford's



at Stowford Parish Hall

We are pleased to advise that the organisers and all that attended our regular quiz evenings this last winter have raised £259 for charity. The beneficiaries this year are St Lukes Hospice and Devon Air Ambulance

From the organisers, a big thank you to everyone who came along.

We look forward to seeing you again on Thursday 10th October 7.30pm



## STOWFORD COMMUNITY COFFEE MORNING

Support this new venture and come and meet your neighbours for a coffee, cake and catch up!

### When?

10am - 12noon on the first Tuesday of every month.

### Where?

Stowford Parish Hall.

### Cost?

£3 per person (cash only) which includes a hot drink and cake.  
Profits will be donated to a charity chosen by SCCM.  
All friends and family welcome.

If you need help with transport, please contact Sarah on 07801 106702 or Tracy on 07973 327161



Monday to Friday

8.45am to 3.15pm

2-5 year olds

Led by Lisa Broadbridge

Early Years Teacher

Please phone for availability

Early Years Foundation Unit with plenty  
of safe outdoor space.

We accept 2gether funding for 2 year  
olds and Early Years Education Funding  
for 3 year olds.

Respect

Kindness

Responsibility

## FLS

Friends of Low Trenchard C of E Primary School

We have an amazing team that  
fundraise to enhance our children's  
learning journey. Please see our FLS  
Facebook page, school website and  
local adverts to support our fantastic  
school.

Bingo ~ Bake sale ~ summer/winter fair ~ raffles ~  
jumble sale ~ sponsored activities and much more!

## Wrap around care

Available for 3-11 year olds

£2 per hour (1/2 hour bookings available)

8am to 8.40 am breakfast club £2 per session

3.15pm to 5.15pm (4.15pm Fridays) after school care including snacks.

For more information, contact the school office on  
01566 783273

[www.lewtrenchard.devon.sch.uk](http://www.lewtrenchard.devon.sch.uk)

Email [lewtrenchard@andaras.org](mailto:lewtrenchard@andaras.org)



## Reflections of a Steam Fireman

When I passed over firing duties I struggled to wake up at 6am for early turns, this turn would involve a 4am start, get up, quick bite to eat and walk to the station for the 5am train to Guildford, I was never late but 7am with that extra hour in bed was difficult resulting in, missing the 06:00 train and being late on duty. I apologised to the running foreman to which he replied your only sorry if you are never late again.



I was then given a list of three locomotive tubes to clean: two U class 2-6-0 and one N 2-6-0 so I reported to the foreman fitter and was issued with a long rod to push through the tubes and long hollow pipe fitted to an air line, all three engine were in the roundhouse for various repairs, so I opened the smoke box door on the first engine and started pushing the rod through the tubes the bottom tubes were blocked and took quite a bit of effort to clear them, when I managed to clear the tubes, I put the hollow rod into

the tubes, I opened the valve covering myself in soot, I then had to go into the firebox and swept the top of the brick arch onto the fire grate and swept through the bars into the ash pan. I was given a small container like an oil can with a wick sticking out of it which was full of paraffin. When lit it gave a good light to see by, then underneath the engine into the pit and cleaned out the ash pan.

The foreman fitter then said you can start on the next one, I was on the third set of tubes when the afternoon running foreman shouted up it 15:00hrs and you do not want to be late twice in one day, lesson learnt do not be late for duty.

It was decided that a lot of steam working on the Reading to Redhill line would cease and the replacement were DEMU ex Oxted line units which had narrow coaches to get through a width restricted tunnel.

These units, two coaches were fitted to a coach with a driving cab this coach was standard size and looked strange and were named by drivers as tadpoles.

At this time the Guildford to Christ Hospital line closed via Cranleigh again this had a restricted tunnel at Baynards so the biggest engine to work the line was a Q1 0-6-0 but we worked the line with Ivatt tanks 2-6-2 ,the loco shed was allocated four tanks nicknamed teddy bears tanks.



About this time the push to electrify the line from Pirbright Junction to Bournemouth a huge tasks and our loco depot was picked for most of this work to Basingstoke.

Work on the two fast lines, with trains diverted to the slow lines, the problem was the workforce were in the middle lines and trains were told to maintain speed on the outside lines. Drivers were very unhappy, it was dangerous and asked if they could pass the works at caution, this was refused and we were told to get on with it, sadly two workman were killed and another survived but lost both legs, the union had to get involved and common sense prevailed.

Fast trains were diverted via Alton and Winchester Junction This involved a pilot engine because of the 1 in 60 gradient starting at Alton, a dead start because the single line token would have to be picked up before proceeding with 10 or 12 coaches. ,You could hear the two engines barking up the bank for miles, or via Guildford to Havant and Fareham and this involved Witley Bank and Haslemere bank, both with a 1 in 60 gradient, you had a run at these banks and if the driver was not happy he could request a pilot engine, for extra assistance.

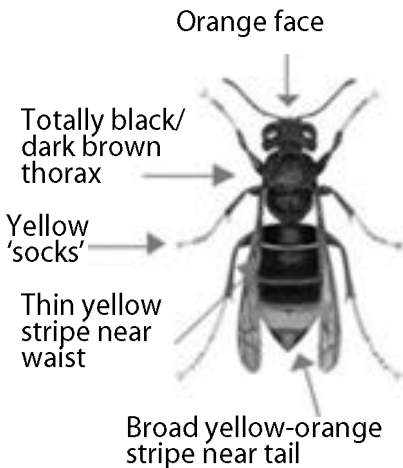
Tom

# Be Alert for Asian hornets!

Asian or yellow-legged hornets (scientific name *Vespa velutina*) were accidentally introduced into France in around 2004. Now they have spread through much of Western Europe. They are serious predators of honey bees, and also attack bumblebees, solitary bees and other insects.

They defend their nests aggressively and will attack anyone who gets too close: **never approach a nest**. Since 2016, there have been sightings of the Asian hornet in the UK, and a few nests have been found.

## Asian hornet



Asian hornets are generally smaller (25-30 mm head to tail) than our native hornet, the European hornet

(*Vespa crabro*), which is 30-35 mm head to tail (but can seem much bigger!).

They are easy to distinguish because Asian hornets are mostly dark brown/black, with yellow 'socks' and an orange-yellow band near the tail. Native hornets look like very large wasps, with brown legs and bright yellow and black/brown markings. Native hornets fly both night and day, while Asian hornets fly only during the day.

**If you see this insect  
PLEASE REPORT IT!**



Asian hornet  
*REPORT*



Native hornet  
*do not report*

The best way to report the Asian hornet is by using the app: **'Asian Hornet Watch'**, or you can send photos and location details to: [alertnonnative@ceh.ac.uk](mailto:alertnonnative@ceh.ac.uk)

For identification help and advice in your area, go to [www.bbka.org.uk](http://www.bbka.org.uk) (British Beekeepers' Association), hover over Asian Hornet and choose Asian Hornet Action Team map from the dropdown menu. Click on a pin on the map for local contact details.

# Lewdown Produce Show

August 24, Lewdown Victory Hall

The show schedule will be available to pick up in Copper's Stores from the end of June

**There are plenty of classes for everyone to enter**



## **Photography:**

- Black & White Photograph
- Wild Weather Photograph
- Work in Progress Photograph

## **Handicraft:**

- An item made with Toilet Rolls
- Get Well Card
- An item of Knitting, Crochet or Needle Felting
- An Edible Necklace
- A Collage using Things from Nature (A4 size)

## **Produce:**

Please refer to the schedule

If anyone has any cups or trophies that have been won in past years at the Lewdown Produce Show then please return them to Sarah or Andy Nash. Thank you!



# Lewtrenchard WI Afternoon Tea

**Tuesday August 13<sup>th</sup>**

**£6 adult / £3 child**

**Speaker / Raffle**

**Doors open at 3pm**

**Pay at the door cash or card**

**Lewdown Victory Hall**

**theWI**  
**INSPIRING WOMEN**



Proceeds to Dartmoor Search & Rescue and  
WI funds for upcoming Flower Festival  
Just come along and enjoy our famous WI welcome



# Lewdown Produce Show Classes

There is something for everyone to have a go at. Go on have a go... come along and support the show 😊

## Section A

1. Garden News Top Tray (See rules enclosed)
2. Three Salad Items on a Plate
3. Three Carrots
4. Three Onions (Sets)
5. Three Onions (Seeds, untrimmed)
6. Three Beetroot (Round)
7. Six Runner Beans
8. Three Potatoes (White-Round or Oval)
9. Three Potatoes (White-Long or Kidney)
10. Three Potatoes (Coloured-Round or Oval)
11. Three Potatoes (Coloured-Long or Kidney)
12. The Heaviest Potato (One entry per exhibitor) (1 prize only)
13. One Marrow
14. A bunch of mixed herbs in a jam jar
15. Pair of Courgettes
16. Six Shallots (Any variety)
17. One Cucumber (Greenhouse)
18. Six French Beans
19. Cherry Tomatoes on the Vine
20. One Summer Cabbage
21. Longest Runner Bean (1<sup>st</sup> prize only)
22. Four tomatoes
23. Any Vegetable not in any of the above classes
24. Two Peppers (any colour)
25. Four Plums
26. Four Apples (Dessert)
27. Four Apples (Cooking)
28. Six Soft Fruit in a Dish

## **Section B**

29. Five Dahlias (Pom-Pom, under 2")
30. Three Dahlias (Cacti)
31. Three Dahlias (Decorative or Ball)
32. One Dahlia
33. One Rose (any variety)
34. Six French Marigold Heads
35. Five Stems of Annuals
36. Five Stems of Outdoor Perennials
37. Six Sweet Peas (Mixed)
38. Four Sweet Peas (One Colour)
39. Three Gladioli (Mixed Colour)
40. One Gladioli
41. Five Rudbeckia Stems
42. Three Stems of Hydrangea
43. Six Fuchsia Heads
44. Potted Begonia (Max 8" Pot)
45. Potted Orchid
46. Potted Geranium (Max 8" Pot)

## **Section C- Cookery**

47. Jar Blackcurrant Jam
48. Jar Jam (Any other Variety)
49. Jar Fruit Jelly (Any Variety)
50. Small pot of Curd (Any Flavour, Cellophane Cover)
51. Jar Chutney Mature (Any Variety, at least 2 months old)
52. Bakewell Tart (presented on a plate)
53. Coffee and Walnut Victoria Sandwich (3 egg mix)  
Decorated Top
54. Lemon Drizzle Loaf (Set Recipe)
55. Three Cookies
56. Four Savoury Muffins
57. Six Pieces Homemade Fudge (any flavour)
58. Four decorated cup cakes
59. MEN ONLY- Special Cherry Cake (Set recipe)

60. MEN ONLY- Six Cheese Straws
61. Jar of Honey
62. Bottle of Fruit Cordial

### **Section D- Handicraft**

63. WI Members only- Flower arrangement in a garden hand trowel (Monica Horn Trophy)
64. An Item Made with toilet rolls
65. Get Well Card
66. An Item of Knitting, Crochet or Needle Felting
67. An Edible Necklace
68. A Collage using Things from nature (A4 size)
69. An Animal Made from Fruit or Vegetables

### **Photography (6" x 4" unframed)**

70. Black and White Photograph
71. Wild Weather Photograph
72. Work in Progress Photograph.

### **Section F- Floral Art**

73. Arrangement celebrating 200 yrs of the RNLI (45x45cm)
74. A Summer Wreath (approx. 8" round)
75. A Foliage Arrangement in an unusual container (45x45cm)
76. A Garden in a Seed Tray
77. Victory Hall Top Vase
78. Tallest sunflower
79. Largest Sunflower Head

### **Children's Classes under 11yrs old**

80. Hand, Fingerprint Art (A4 size)
81. Rice Krispie 6 squares (set recipe)

### **Family Class**

82. Scarecrow Competition (traditional farmyard scarecrow) to be displayed up at the hall.

**All classes can be entered by children and adults**

# Gardening Jobs For August

August is here, and whilst July was cool and wet, hopefully summer finally makes an appearance. The village shows are fast approaching, and there is still lots to do in the garden, so here are my top tips to stay ahead in August..

## Get show ready

The local village shows are top on the priority list, with the Lewdown show on Saturday 24th August, here are my top tips for having a successful show season:

1. Some vegetables can be prepared well in advance of the show, this includes tidying up and tying the tops of things that store well like onions and shallots. This gives you one less thing to worry about right before the big day, and means you can focus on those items best shown fresh (like fruit and flowers)



2. If you can, take spares, there are often a casualty or two on the trip to the show. Even if all your items survive the journey, it gives you a chance to fine tune your chosen set of items on the display table and make sure they are the perfect match



3. Don't forget to read (and re-read) the rules - I once overlooked the 'with foliage' brief for a sweet pea class and won't be making that mistake again!



## Keep on sowing

Whilst there might not be much room in the garden until you pick your prize winning vegetables ready for the show, spaces will quickly open up. Here are some of the things I am sowing in August for either quick growth to make autumn harvests (A), or for plants to over winter (OW) before being harvested next spring:

Beetroot (A)

Turnip (A)

Radicchio (A)

Florence fennel (A)

Lettuce (A)

Radish (A)

Spinach (OW)

Spring Onions (OW)

Spring Cabbage (OW)

**Happy gardening, and good luck at the show !**

Liam

## **Recipe of the Month - Tomato and Mozzarella Salad**

### **A family summer favourite**

#### **Ingredients:**

Fresh vine tomatoes      Buffalo mozzarella      Extra virgin olive oil  
Fresh basil leaves      Salt & black pepper

#### **Method:**

Cut tomatoes in small, thin rings and arrange on a large plate, season with salt & black pepper.

Break off pieces of mozzarella and dot over the tomatoes, season with salt & black pepper, drizzle with a good glug of olive oil.

Garnish with as many basil leaves as you like.

Let the salad infuse for a while, serve with fresh bread and a nice cold Rose wine or homemade lemonade.



## **Crime Thriller of the Month for August 2024**

### **All the Colours of the Dark by Chris Whitaker**

A missing persons mystery, a serial killer thriller, and an epic love story - with a unique twist on each.

Late one summer, the town of Monta Clare is shattered by the abduction of local teenager Joseph 'Patch' Macauley. Nobody more so than Saint Brown, who is broken by her best friend's disappearance. Soon, she will eat, sleep, breathe, only to find him.

But when she does: it will break her heart. Patch lies in a pitch-black room - all alone - for days or maybe weeks. Until he feels a hand in his.

Her name is Grace and, though they cannot see each other, she takes him from the darkness and paints their world with her words. In this hopeless place, they fall in love.

But when he escapes: there is no sign she ever even existed. To find her again, Patch charts an epic search across the country. And, to set him free, Saint will shadow his journey: on a darker path to hunt down the man who took them. Even if finding the truth means losing each other forever.

*Publisher: Orion Publishing Co*  
*ISBN: 9781398707658*



# Lewtrenchard WI July Report

**We met on July 8 at Lewdown Victory Hall.** Barbara extended a warm welcome to our members as well as Kim, a guest from Lifton and Bude WI's and also to Kathy Curtis our guest speaker.

After Jerusalem, it was straight over to Kathy: A Beauty Evening. Kathy is a Tropic ambassador with many years' experience, she is heading a team of 60 in this area. Kathy is extremely knowledgeable and passionate about the product. Lynn volunteered to have a mini-facial, which she seemed to enjoy, guessing the ingredients correctly when asked what she could smell, she looked marvellous afterwards.



After Kathy's talk we stopped for some refreshments. Kathy was very happy to answer questions from the floor about her products. We rounded off the evening with a bit of business. It was a very uplifting atmosphere; everyone seemed to have a good time.

**Date and venue for next meeting: Tuesday August 13, 2024 Afternoon Tea Event 3pm Lewdown Victory Hall - all welcome**

## **August dates for your diary:**

- 13 - Afternoon Tea Event 3pm
- 15 - Coffee Morning at Roadford Lake
- 26 - Monday Walk

Go on come along and see what we are about the WI is not all Jam & Jerusalem J

## From the Mountains of Japan

### No.5 - Echizen's Secret Giant Buddha

Being partially a Buddhist country (the other main religion being Shinto) Japan is not surprisingly a land with a lot of Buddha statues, and some of them are quite enormous. They can be found standing outside temples or seated indoors. Some are more revered than others. If you do a Google search for the biggest indoor Buddha in Japan, you will invariably be met with results for the "Daibutsu" (literally "big Buddha") in Todai Temple in Nara, one of the main stops on the country's tourist trail.

However, there is a bigger one, but to visit it, you have to go a long way off the beaten track. In central Japan's Fukui prefecture, in the region historically known as Echizen, outside the small provincial town of Katsuyama, you can find Daishizan Seidai Temple, a stunningly large building inside which a truly staggering 17m high Buddha statue can be found.

However, what you won't find are the crowds. On the day my daughter and I visited in March, 2023, we were practically the only people there. And while my daughter was more interested in a friendly cat resident to one of the handful of empty souvenir shops, I was left quite awestruck by the size of the statue.

You won't find this statue in any tourist guidebooks. The reason being is that rather than sharing the long history of the two infinitely more famous Buddha statues at the two ancient capitals of Nara and Kamakura, the Echizen giant Buddha was only built in 1987, financed by a local man who had built a taxi empire after the Second World War. Designed to his specifications, his intention was for it to be a benefit to his hometown, even if its youth, lack of historical connections, and remote location have all meant it hasn't worked out that way.

In addition to the giant statue, there are more than a thousand other statues on the same site, one of Japan's tallest five-storey pagodas, and some picturesque gardens, so if you find yourself in this rural corner of Japan and fancy seeing a religious wonder without the crowds, it's a good option. Just don't go on a weekend. As one bored shopkeeper told me, "we sometimes get a few people then."



**Chris Ward**

Pheasants come to our garden, they are quite tame and will stay a couple of feet away waiting for us to put out seeds for the birds. They even tap on our windows looking in at us and then running across the lawn to wait.

## **Pheasant Facts**

The non-native Pheasant is the most common bird found in the UK countryside. Male ring-necks have a white ring around their neck with body plumage of gold, brown, green, purple, and white. The head has plumage of blue and green with a distinctive red wattle. Females are much less showy with drab brown feathers.

Pheasants are birds that can be found alone or in small flocks. Normally, a mother hen and her chicks will stay together until early autumn. While pheasants are able to fly fast for short distances, they prefer to run. If startled, they will burst to the sky in a "flush." Their flight speed is 38 to 48 mph when cruising but when chased they can fly up to 60 mph!

Pheasants spend almost their entire life on the ground, rarely ever being seen in trees. They eat a wide variety of foods including, insects, seeds, and leaves.

Males typically have a number of females during spring mating season. Hen pheasants nest on the ground, producing a clutch of around twelve eggs over a two to three week period in April to June. The incubation period is about 23 days.

Males average 2 to 3 pounds while their females average 2 pounds. Males measure 24 to 35 inches long (the tail accounts for about 20 inches); females are smaller with a much shorter tail.

Favourite foods include corn, seeds, insects. Preferred habitat undisturbed grass. Average clutch size: 12 eggs Average rate of chick survival: 50%

Major nest predators: fox & cat. Major adult predators: human, fox, hawk & owl.

Rarely, if ever, does a pheasant die of old age. In fact, the average life span is less than 1 year. The pheasant is a prey species and must face major sources of mortality beginning the day it is laid in the nest as an egg. They ordinarily live until they're shot or get eaten by something other than man!

Interestingly the UK breeding population grew by +40% between 1995 & 2020 and there were an estimated 2.4 million females in 2016.



## August's Sudoku

	8	6			7			1
	3	2				8		
5	1		9					
				7	9			3
			1		4			
6			8	2				
					2		1	9
		4				2	7	
8			7			4	5	

## X Words

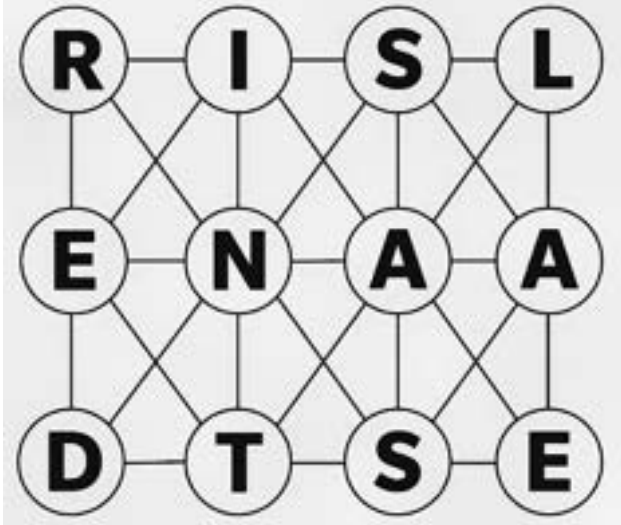
The X in each word represents missing letters. Figure out which letters are missing to uncover each word. This one is a head-scratcher!

**WXY**  
**POXTATE**  
**NEXRK**  
**CAX**  
**HXY**

**Comic Sans, Helvetica and Times New Roman walk into a pub. The landlord yells, "Get out! We don't serve your type in here!"**

## Spell it out

Spell out a two-word place name by traveling to each letter along the lines. You can go through each circle only once



# Lewdown Grouped Parish Council

Coryton, Lewtrenchard, Marystow and Thrushelton  
**Councillor Vacancies**

Would you like to become a councillor representing the parish of Coryton or Marystow.

Would you like to help shape the future of the area where you live.

If so, why not come along and see what is involved in being a parish councillor, you may then decide to join your parish council and make your own contribution to the future.

Contact the clerk for more details:

Parish Clerk: Peter van Delft, Tel: 01566 783023 Email: [lewdowngpc.clerk@gmail.com](mailto:lewdowngpc.clerk@gmail.com)  
[www.lewdowngroupedpc.org.uk](http://www.lewdowngroupedpc.org.uk)

## NewsLink Articles Required

We are seeking articles for our magazine so if you have an interesting hobby, pastime or favourite sport please write about it, take a photo or two and email over to the editor for consideration.

Thank you 😊

### Lewdown

The Lewdown defibrillator was non-functional and has been removed from the roadside porch of the Blue Lion, a replacement is being sought urgently.

### Chillaton

Located in the Village Square on the wall of No. 1 Barn Cottages, PL16 0HS. The 999 operator will be able to give directions for its use.



# *INTERESTED IN ART ?*

*During August there are a number  
of Exhibitions nearby.*

*“Drawn to the Valley” Summer Exhibition  
6<sup>th</sup> - 10<sup>th</sup> August, Butchers Hall, Tavistock  
(Entry Free)*

*“Drawn to the Valley” Open Studio  
Exhibitions*

*24<sup>th</sup> August - 1<sup>st</sup> September*

*(Visit studios in the Tamar Valley area, talk to the artists)  
(Entry Free)*

*Catalogues will be available soon at  
Lewdown Post Office*

*Your nearest Exhibition will be at  
the Pavilion, The Sports Ground, Lydford.*

*ALSO*

*24<sup>th</sup> August - 26<sup>th</sup> August  
At the Nicholls Hall, Lydford.  
(Local artists' work)*

*Come along and enjoy!*



# CHURCH NEWSLETTER

## Ministers

United Benefice of Lifton, Broadwood, Stowford,  
Lewtrenchard with Thrushelton & Kelly with Bradstone

**The Revd. Philip Conway, 01566 784462**

**[liftonpriest@yahoo.com](mailto:liftonpriest@yahoo.com)**

The Rectory, Parsonage Court, Lifton PL16 0BJ

Milton Abbot Benefice

**The Revd. Andy Atkins, 01822 870298**

**[andya4jc@gmail.com](mailto:andya4jc@gmail.com)**

The Vicarage, The Parade, Milton Abbot PL19 0NZ

## Churchwardens

### Lifton - St Mary's

Mrs E Brownl 01566 784386

Sarah Chandler

### Broadwood - St Nicholas

Mr D Perkin 01566 776758

### Kelly with Bradstone - St Mary's

Mr W Kelly 01822 870393

### Marystowe - St Mary the Virgin

Amy Harrowell 01822 860181

Joy McSmythurs 01822 860630

### Coryton - St Andrews

Mr G. Vicat 01822 820254

Mrs J Whitfield 07989 666427

### Stowford - St John the Baptist

Mr C Chick 01566 783223

### Lewtrenchard - St Peters

Mrs A Westlake 01566 783909

Mrs R. Dawe 01566 783127

### Thrushelton - St George

Mr A J Nash 01566 783274

Mr T Nash 01566 783320

## From the Parish Priest

Dear friends,

It is correctly said, that with enough thought and manipulation, you can find support or condemnation for everything and anything in the Bible.

People have, historically, selectively used scripture to support the Slave Trade, apartheid, ethnic cleansing, and many other horrific beliefs and practices. So we always need to be careful when people use Holy Scripture to back up their arguments. We need to read our bibles with care, thought and intelligence.

One of the most important concepts in Scripture, from the very beginning of Genesis and throughout the Old and New Testaments, is the importance of Rest. This is not human beings digging into scripture to excuse a few days off, but something that is part of God's design for us.

Rest, Relaxation and Recreation: the Three R's for the holidays especially! Even if we



are not fortunate to be on Holiday this month, the Holiday season reminds us all of the importance of taking time for ourselves. This is something that we see in the Creation Story, and in the life of Jesus. There is a reason why a Day of Rest is one of the Commandments!

So please, make sure you give yourselves some time for Rest and Relaxation this summer, so that we can all be recreated, full of life and energy, to live our lives to the full and witness to God's love.

With love and prayers,

Philip

## **Service times for August 2024**

*Any updates will be posted on the Mission Community Website [north-tamar-churches.org](http://north-tamar-churches.org).*

### **4th August The Tenth Sunday after Trinity**

With Thanks to The Revd. Sue Tucker, who will be presiding at the Eucharist's today

**No 8am Eucharist at Stowford**

**9.30am Parish Eucharist at Lifton**

**11.15am Parish Eucharist at Kelly**

### **11th August The Eleventh Sunday after Trinity**

**9.30am Parish Eucharist at Broadwoodwidge**

**Morning Prayer at Thrushelton**

**11.15am Parish Eucharist at Lewtrenchard**

**4pm Evensong at Lifton**

### **18th August The Twelfth Sunday after Trinity**

**9.30am Parish Eucharist at Lifton**

**11.15am Parish Eucharist at Stowford**

**Morning Prayer at Kelly**

**3pm Third Sunday Baring Gould Reflection**

Baring-Gould and Mary

### **25th August The Thirteenth Sunday after Trinity**

**9.30am Parish Eucharist at Thrushelton**

**Morning Prayer at Lifton**

**Morning Prayer at Broadwoodwidge**

**11.15am Parish Eucharist at Lewtrenchard**

**6.30pm Flower Festival Service at Broadwoodwidge**

### **Wednesday Morning Eucharist: 10.30 at Lifton**

There will be some occasions when the Wednesday Morning Service will be a service of Morning Prayer.

# Bridestowe Methodist Church

## Preachers for August 2024

4th	Drop in the Ark	10:30 - 12:30
11th	D Sutcliffe	11:00
18th	M Cooke <b>US</b>	11:00
25th	A Banfield	11:00

## St. Mary the Virgin, Marystowe

Please see the church website [www.southtamar.church](http://www.southtamar.church)  
for details about services.

Services are also available online from 6pm on Sundays.

### Quakers

Meeting for Worship:

#### Tavistock

Every Sunday 10.00am.

4 Canal Road

Tavistock

Contact: Kay Nicholson

01822 614596

#### Okehampton

Second Sunday 10.30am.

Fourth Sunday 10.30am

Second Sunday Children's Meeting

Ockment Centre

North Street

Okehampton

Contact: 01837 55805

### *Roman Catholic Services*

#### **Tavistock**

Sunday 9.15am

Holy Days 10am

Fr. Greatbatch 01822 612645

(P. Sparling 01822 860355)

#### **Okehampton**

Saturday 6pm

Sunday 11am

**Chagford** - Sunday 9.00am

Fr. A. K. Gundabathina 01837 52229

[anil.gundabatina@pcdtr.org.uk](mailto:anil.gundabatina@pcdtr.org.uk)

#### **Launceston**

Sunday 10.30am

Holy Days 7.30pm

Canon John Deeny 01566 773166

*The Parish Church of St. Nicholas*  
*Broadwoodwidger*  
Flower Festival



**Saturday 24th to Monday 26th August 2024**

**Free Entry**



*Cream Teas*  
*served from*  
*2.pm in*

***"The Hub"***

*Do join us for our*

***Festival Service***

***Sunday 25th August at 6.30pm.***

*A Warm Welcome to Everyone.*  
The North Tamar Mission Community

The Parish Church of St. Peter Lewtrenchard



**Sunday 18th August 2024 at 3pm**

***3rd Sunday Afternoon Reflection***

***Solemn Evensong  
and Address,  
followed by Tea***

**Baring-Gould, and Mary  
the Mother of Jesus**

SB-G was devoted to the  
person and example of Mary..



***Preacher:***

***The Revd. Andrew Thomas,:***  
***Member of the Sodality of Mary,***  
***Mother of Priests.***







## Flower Festival

'WI Campaigns'  
SBG Centenary Year



Open 6th, 7th, 8th September 10-5pm  
St. Peter's Church, Lewtrenchard  
(Disabled access)

Admission free

Donations for St. Peters' Church Funds appreciated



Light Refreshments available in the Church

Parking available in the Church Car Park



Arrangements by Church and WI members

theWI  
INSPIRING WOMEN

Sabine Baring Gould's daughter-in-law  
founded Lewtrenchard WI in 1927





**07734 956925**

8- Seater Vehicle Available

*Anytime - Anyplace - Anywhere*

AIRPORT • TRAIN STATION  
SHOPPING • DOCTOR

Prompt Reliable Honest  
FAMILY RUN COMPANY  
24/7 365 days

# TINHAY

## BUILDING SUPPLIES LTD

Supplying quality building materials to the trade and DIY

**We're bigger  
than you think**

**Lifton**

Tinhay Mill Industrial Estate, Tinhay, Lifton, Devon PL16 6AH

Telephone: 01566 784385

Email: [lifton@tinhaybuildingsupplies.co.uk](mailto:lifton@tinhaybuildingsupplies.co.uk)

**Launceston**

Newport Industrial Estate, Launceston, Cornwall PL15 8EX

Telephone: 01822 771989

Email: [launceston@tinhaybuildingsupplies.co.uk](mailto:launceston@tinhaybuildingsupplies.co.uk)

**Tavistock**

Pixou Lane, Tavistock, Devon PL19 8DH

Telephone: 01822 619809

Email: [tavistock@tinhaybuildingsupplies.co.uk](mailto:tavistock@tinhaybuildingsupplies.co.uk)

**FREE LOCAL DELIVERY**  

[www.tinhaybuildingsupplies.co.uk](http://www.tinhaybuildingsupplies.co.uk)

## LOGS



SEASONED  
HARD WOOD,  
SPLIT TO YOUR  
REQUIREMENTS.

DELIVERED  
LOCALLY

07942 073204

[the2relics@gmail.com](mailto:the2relics@gmail.com)

## PLUMBER

**EST 40 Years**

**Lewdown  
& District**

**Tel: 01566 783562**

**Mobile: 07731878510**

# A.J.NASH BUILDERS LTD

Andy Nash

General Builder and Decorator



07769728425

01566783274

[sarahnash@btinternet.com](mailto:sarahnash@btinternet.com)

# CBL STOVES

The Showroom, Unit 5  
Red Post, Bude, Cornwall  
EX23 9NW

01288 381852  
[carl@cblstoves.co.uk](mailto:carl@cblstoves.co.uk)  
[www.cblstoves.co.uk](http://www.cblstoves.co.uk)



- Stainless Steel twinwall flues
- Chimney Lining
- Iskoern Pumice lining
- Fireplace alterations
- Stove Installations
- Wood, Multifuel, Gas & Electric Traditional & Contemporary Stoves & Fires
- Chimney Rebuilds
- Slate, Granite & Glass Hearths
- Wood & Ceramic beams & surrounds
- Floating Shelves



# Tim Dixon

---

**Domestic Plumbing &  
Bathroom Fitting**

**01566 784028**

**07903535881**

**careful & reliable service**

**timdixonplumbing.co.uk**

# Megan's Home Cleaning!

**10+ years in the  
Business**

**Earth Friendly  
Cleaning solutions  
Weekly & bi-weekly  
Slots available**

**Tel: 07955 805 271**

## **MARK CHIVERS - SOLE TRADER**

Highly skilled carpenter with over 40 years  
experience, including but not limited to:

### ***INTERIOR***

**KITCHEN • BATHROOMS • BEDROOMS  
FLOORING • DOORS • WALLS**

### ***EXTERIOR***

**FASCIA & SOFFIT • GUTTERING & DOWNPIPE  
WINDOWS (including sash repairs) • FENCING**

**FREE ESTIMATES - UNDER NO OBLIGATION**

The best price and best service for your budget  
*Please Do Not Hesitate To Contact Me With Any Enquiries:*



**CARPENTRY & JOINERY**


**Mobile: 07804 104812  
(8am-7pm)**

**Home: 01566 783743  
(9am-5pm)**

**Email any time:  
m.c.carpentry@outlook.com**



 07836 760060

 [BrowningsCarpentry@gmail.com](mailto:BrowningsCarpentry@gmail.com)

All Aspects of Bespoke  
Carpentry & Joinery

 Browning's Carpentry & Joinery

## Chair Yoga for Seniors

with Yogajeanie

**Chair yoga helps with**  
**Muscle toning**  
**Reduced stress levels**  
**better breathing habits**  
**better sleep**  
**overall sense of well-being**  
*It's fun too!*

**Interested?**  
**Just come along in comfy clothing**

**At Lewdown Village Hall**  
**Thursday's**  
**from 10:00 am -11:00 am**  
**£7 per class**

For more information contact  
[jeanharris50@hotmail.com](mailto:jeanharris50@hotmail.com)  
Mobile 07929 278788



## R Mears & Sons

### Chimney Sweeps & Stove Installation

Established over 30 years

Vac Brush. Full CCTV investigations.

Pots, Cowlings & Bird Protection fitted. Chimneys Lined.

Solid Fuel Appliances, Rayburns, Woodburners,

Stoves, etc serviced. Fully Insured.

Tel: 01840 261221 Tavistock: 01822 664554

Mob: 07737 533392

[www.sweepdevon.com](http://www.sweepdevon.com)





# Blue Lion Inn, Lewdown

Charlie, Nicky, Charlotte, Georgia, Jonty & Alfie  
Welcome you to our Family Friendly Pub

01566 783238



*Public House offering good food, real ales,  
live music, pool, skittles, darts and BT Sports*

*For upcoming live music & quizzes etc. follow us on Facebook  
Search for 'blue lion inn'*



## Mobile Foot Care

*Sally Isaac S.A.C. Dip. FHPT/FHPP*

*Gentle and professional  
foot care  
in your own home*

- If you suffer discomfort from*
- corns
  - cracked heels
  - callus
  - ingrown toenails
  - thickened/tough nails

*or just have difficulty cutting  
your toenails then  
please ring me*

*I'll come to you!*

Telephone Sally  
07961 076 168

WELCOME TO  
LOBHILL FARMHOUSE  
BED AND BREAKFAST  
and HOLIDAY COTTAGE



Lobhill Farmhouse, Lewdown  
EX20 4DT

Tel: 01566 783542  
07817 244687

Jane Colwill

[www.lobhillbedandbreakfast.co.uk](http://www.lobhillbedandbreakfast.co.uk)

## COLOUR PRINTING & COPYING

This service is available for a minimum of 10 copies at a charge of 5p per single copy or 7p per double sided copy.

### FOR SALE COPIER PAPER

**£4.75 per ream**

The Community NewsLink purchases its paper in bulk and as such is able to access competitively priced materials. We can currently offer our readers copier paper for the special price of £4.75 per ream, a vast saving on High Street prices. We recommend you phone to check availability and arrange a convenient time to collect.

Please Contact: **Terry Southcott, Fairview Bungalow, Lewdown**  
**Phone 01566 783079. or M 07831309666**

All proceeds will go to The Lewdown Residents Association  
who produce The Community NewsLink.

## Milton Abbot Grouped Parish Council

Please see our website for lots of information  
about Milton Abbot, Chillaton, Bradstone, Dunterton and the surrounding  
areas, along with a list of the local Parish Councillors

**[www.magpc.co.uk](http://www.magpc.co.uk)**

Stowford  
Parish Hall 

For bookings and enquiries contact Julie Chick Tel: 01566 783223

Email: [stowfordparishhall@gmail.com](mailto:stowfordparishhall@gmail.com)

A Defibrillator is located in the porch - Postcode EX20 4BZ

Charity No: 1020031

# GRAHAM TOWNSEND GROUNDWORKS

**WATER DRAINAGE & GROUNDWORK SPECIALISTS**

**WATER LEAKS & RENEWALS  
SEPTIC TANKS INSTALLED**

**DRAINS CLEARED  
TREATMENT PLANT  
ALL FENCING WORK  
DEMOLITION**

**GROUNDWORKS  
DRAINS REPLACED  
MOLING (No Dig)  
PATIOS DRIVES**

**FREE ESTIMATES**

**TEL: 01837 657687 / 01566 783788**

**MOBILE: 07866 465093**

**email: [info@gtownsendgroundworks.com](mailto:info@gtownsendgroundworks.com)**

## **Roger's**

**Painting & Decorating  
Services**

**Interior & Exterior Work  
Traditional & Modern Techniques**

**City & Guilds Qualified  
30 years Experience**



**Mobile: 07783 819171**

## **Septic Tanks**

### **Emptied**

**Phone: 01805 601203**

**Mobile: 07831 241531**

**Leave a message, we will re-  
turn your call, or email:**

**[hearnhaulageltd@outlook.com](mailto:hearnhaulageltd@outlook.com)**

**Small Lorry  
Available**

**Card payment accepted**

**Hearn Haulage Ltd**



TORQUAY TAXIS Ltd

AIR AND SEA PORT  
TRANSFERS

luxury comfortable transport

Door to door service

All air and sea ports covered

Reliable service

Competitive prices

18 years established

Call Jared Spencer

07830360341

01566 451442

**ROGER  
WONNACOTT**  
GROUND & GARDEN MAINTENANCE

- ▲ GENERAL GARDEN MAINTENANCE
- ▲ SERVICES RENEWED & REPLACED
- ▲ LEAK REPAIRS & TROUBLESHOOTING
- ▲ MOLE / GRINDOMAT WORK UNDERTAKEN
- ▲ MOLE & COMPRESSOR AVAILABLE



- ▲ COMPLETE JOB PRICING OR HOURLY RATES
- ▲ FULLY INSURED & BASED NEAR LAUNCESTON

07919 912776

rwonnacott@hotmail.com



supplier of  
HARDWOOD LOGS  
cut and split to your  
requirements

**Tel. Colin Bennett:**

**01822 487259**

**Mobile:**

**07523172369**

## Lewdown Victory Hall

Bookings contact

Roy Stacey

on 01566 783267



## Broadbury Landcare

All aspects of Garden Maintenance  
and Landscaping

Fully Qualified Fully Insured Free Estimates

10 Years Experience

**Andrew Barton 07532 216216**

# Raw Meat Animal Feed For Dogs & Cats

Convenient blocks *Frozen to preserve*

**Natural, just meat or meat and bone**

No Preservatives, No Artificial Colouring's

(both can be harmful to your animal)

## Raw Rations Plus



For information or to order

website: [www.rawrationsplus.co.uk](http://www.rawrationsplus.co.uk)

Phone: **07831309666** or **01566783079**

Email: [sales@rawrationsplus.co.uk](mailto:sales@rawrationsplus.co.uk)

Post: Fairview Bungalow, Lewdown,  
Okehampton, Devon EX20 4DL



## A C WORTH BUILDERS



GENERAL BUILDERS, DECORATORS,  
PLUMBING & HEATING,  
PURPOSE MADE JOINERY etc.

Kirtonia, Vale Down, Lydford DEVON EX20 4BB

Email: [acworthbuilders@aol.com](mailto:acworthbuilders@aol.com)

Tel: 01566 783282

Keith: 07778 471648

Andy: 07867 524515



# RED SQUIRREL TREECARE

Chillaton - Devon  
Tree Removal - Pruning  
Hedge Cutting- Seasoned Firewood  
Low impact/small scale Forestry  
*call Matt on 01822860651*  
e:info@redsquirreltreecare.co.uk

Why Get Wet ?

White Umbrellas

For  
Your Wedding



To Hire  
Tel: 01566 783342  
All Proceeds to the Gurkha Welfare Trust



## T C M Plumbing

Burst pipes? Tap dripping? Overflow running? Valves Leaking?  
Radiators not getting hot? Gutters blocked or leaking?  
Based locally at Inwardleigh we cover the surrounding areas  
Helping you with your plumbing needs no matter how small

Contact Tim Morgan  
Tel: 01837 810599      Mobile: 07838 901803  
Or visit our website [www.tcmlumbing.org.uk](http://www.tcmlumbing.org.uk)  
to see what we can do for you



Ella Payne Gardens  
Design & Maintenance  
RHS Qualified  
07968 170130

BROADWOOD BOILER SERVICES



QUALITY OIL FIRED APPLIANCE  
MAINTENANCE AT  
COMPETITIVE PRICES

CALL MARK  
☎ 0781 4976 076 OR 01566 784298

## MARKSTONE GRANITE

*We don't just sell granite.....*

- \* Slate: Flooring, Worktops, Sills, Hearths, Tables & Benches.
- \* Oak Beams, Sleepers, Barrels & Boards (perfect for shelves)
- \* Natural Stone Paving & Cobbles.
  - \* Porcelain Paving & Flooring.
  - \* Reclaimed Bricks
- \* Granite Quoins, Cobbles, Lintels, Steps, Plinths, Posts & Troughs



Tel. 01566 784289 Lifton Devon.  
[www.markstonegranite.co.uk](http://www.markstonegranite.co.uk)



## TAVISTOCK STOVES

& FIREPLACES

Woodburning, Multifuel,  
Electric & Gas Stoves.



*In our Showroom:*

- Live working displays
- Maintenance products – rope, bricks, glass, cement, paint etc
- Fireplace accessories



*Our Services Include:*

- Free site survey.
- Full installation service.
- Repair & maintenance.



4 Vigo Bridge Road, Tavistock, PL19 0EY  
Tel. 01822 487700 [sales@tavistoves.co.uk](mailto:sales@tavistoves.co.uk)  
[www.tavistoves.co.uk](http://www.tavistoves.co.uk)



# Gardeners



Enjoy the Winners Circle

For that champion veg

Collect your own FREE

Proper Well Rotted Horse manure

**01566 783 515**

**lydvalefellponies@gmail.com**

Free Bags Available!

Trailers welcome!



## The Clovelly Inn

Bratton Clovelly



Torben, Suzy, Alex & Thomas  
look forward to seeing you  
**01837 871447**

## Apples Juicing

Have you got too many apples?

We can crush them, press, bottle  
& sterilise for Juice

Contact - George Bellamy

Woolacott Farm, Lewdown

**01566 783266**

## TOP SOIL

**TOP QUALITY TOP SOIL FOR SALE**

**SEA SAND**

**ROAD PLANINGS**

**VARIOUS DECORATIVE GRAVEL CHIPPINGS & BUILDING AGGREGATES**

**No VAT**

**01566 784645 OR 07771 823414**

# **K. Moore & Son.**

## **PLANT HIRE**

**Specialising in all sitework,  
drives, sand schools, septic tanks  
hedging and all types of farmwork.**

**Royal Oak, Newton Down, Lifton**

**Tel:- 01566 784722**

**07785 540494**



## **Upholstery Service**





**A New Life for your  
Favourite Furniture**

**Collection & Delivery Available**



**Call:** Linda 07484 093494 or **Email:** sales@fabricandfurniture.co.uk

 @fabricandfurniture  fabricandfurniture

**[www.fabricandfurniture.co.uk](http://www.fabricandfurniture.co.uk)**

# S H Joinery

Granite and Quartz worktop cutting and fitting

Cut roofs

Traditional A frames

Kitchen fitting

External bi fold doors

Joinery



Steve Hunt

01566 783228

07974 799062

shjoinery@hotmail.com



**Caroline Harris** MIAB

*Owner & Bookkeeper*

**Tel:** 01566 783 502

**Mob:** 07866 953 708

cmhbookkeeping@btinternet.com

www.cmhbookkeeping.co.uk

- + Bookkeeping
- + Self Assessments
- + Accounts Preparation
- + VAT Returns



**CPC TRAVEL AGENCY**

Your Friendly Local Independent Travel Agent

**Making Your Dream Holiday's  
Become Reality since 2017**

**01837748055 - enquiries@cpc.travel**  
**www.cpc.travel**  
**16 Red Lion Yard, Okehampton**

Part of

